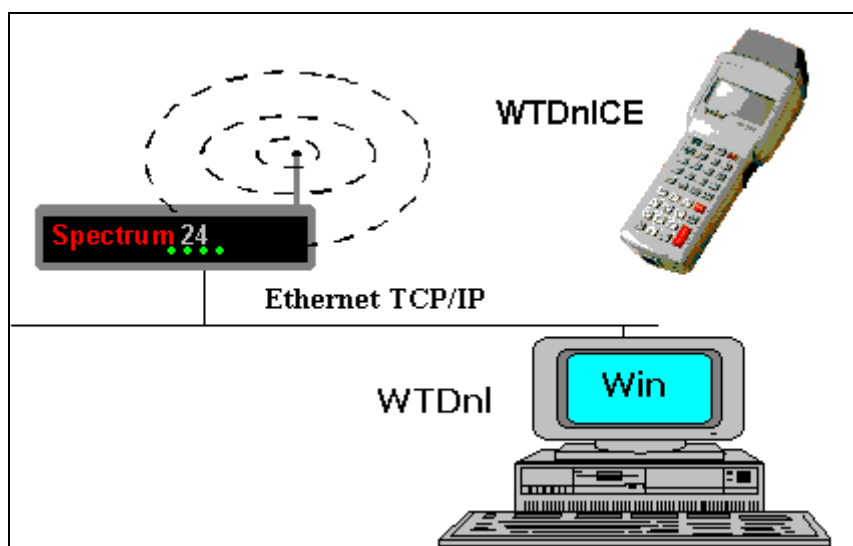


1. Features

WTDnICE is an application for uploading configuration files (.cfg) into portable terminals with Windows CE from a PC with WireLess TelNet Downloader.

The file transfer is done by radio way over TCP/IP.

2. Topology



Topology of the wireless network.

3. Requirements

PDT Terminal	<ul style="list-style-type: none">• Windows CE• WTDnICE program
Spectrum 24 Network	<ul style="list-style-type: none">• Access Point connected to server• Spectrum 24 802.11 network configured
WTDnI Server	<ul style="list-style-type: none">• PC under Windows 95, 98, Me, NT, 2000 or XP• WTDnI program• Ethernet card• TCP/IP Network configured


4. Installation

WireLess TelNet Downloader CE (WTDnICE) is installed together with WireLess TelNet Emulator CE (WTnCE).

See the WTnCE manual for further help.

A shortcut to WTDnICE will be created on Windows CE's Start menu, on the PDT.

5. Execution

There will be a shortcut to WTDnICE on Windows CE's Start menu which you may identify with the icon: 

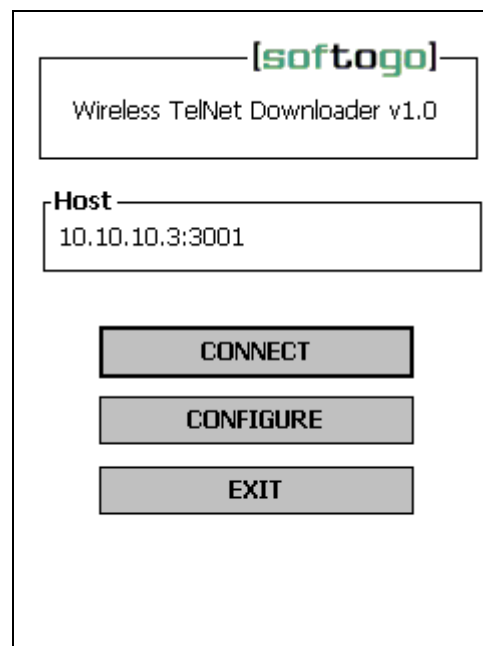


6. Main Menu

WTDnICE's main menu is composed of three options:

- Connect: Starts the configuration file transfer from the server.
- Configuration: allows configuring the server's IP address and port, and choosing the language for WTDnICE.
- Exit: Closes the application.

It also shows the current configuration for the server's IP address and port.

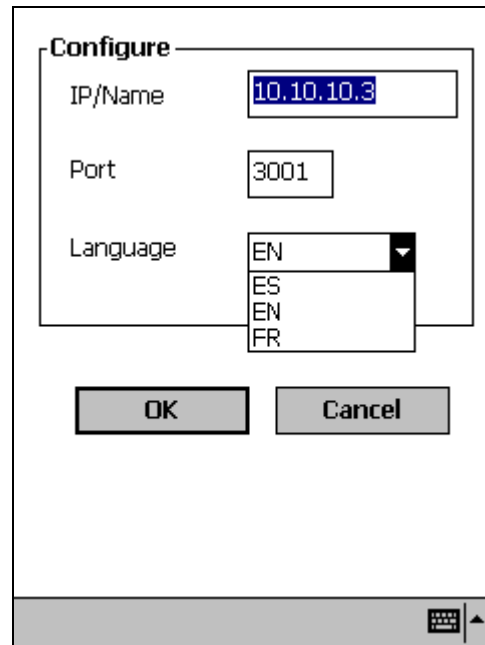


7. Configuration

7.1. Language

WTDnICE is available in three languages: english (EN), french (FR) and spanish (ES).

The language is chosen from the configuration menu. You will need to restart the application for language changes to take place.

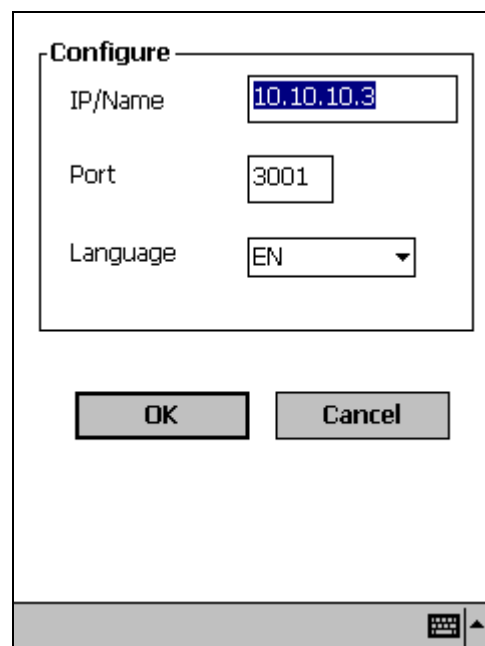


7.2. IP configuration

In the configuration screen you may specify the IP address or host name of the server you want to upload the configuration files (.cfg) from.

Note: WireLess TelNet Downloader (WTDnI) must be running on the server during the file transfer.

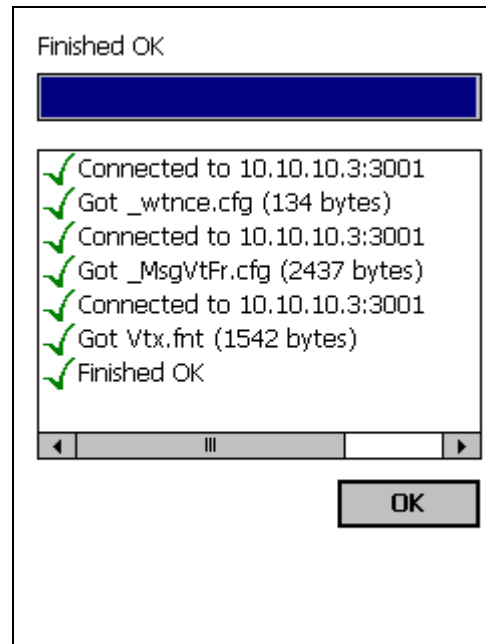
You may also specify the server's port to which you want to connect. The default port is 3001.



8. Connect

To start transferring files from the server you should choose the Connect option on the main menu.

When this option is selected, file transfer is started. A screen shows the results of the communication between the terminal station and the server.



Visit our site <http://www.softogo.com/>
Contact us info@softogo.com