

[softogo]

WireLess
Telnet Downloader
(WTDn1)

Table of Contents

- [1. Features](#)
- [2. Overview](#)
- [3. Required configuration](#)
- [4. Installation](#)
- [5. Language](#)
- [6. Starting](#)
- [7. Open](#)
- [8. Settings](#)
- [9. Saving](#)
- [10. Downloading](#)

WTDnl Help

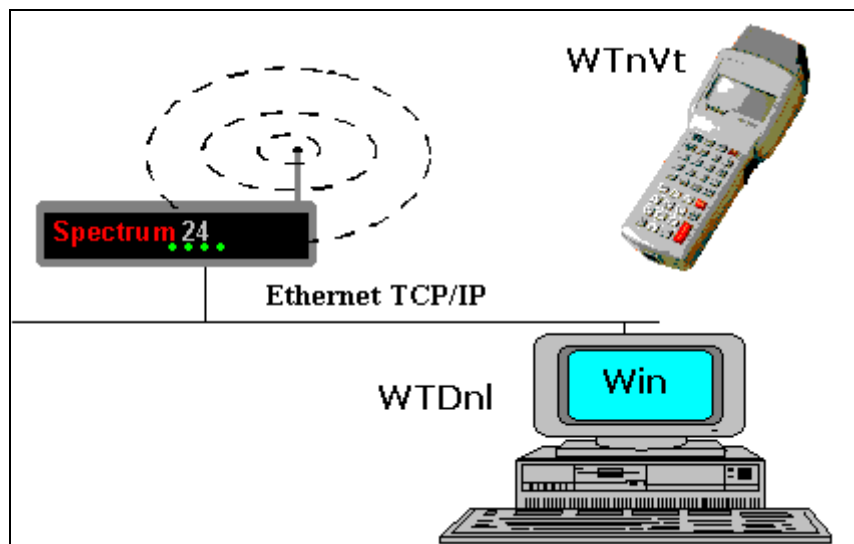
1. Features

WTDnl runs under Windows operating systems (95, 98, Me, NT et 2000) and allows downloading configuration files into PDT hand held terminals with the WireLess TelNet VT program (WTnVt).

The file transfer is done through radiofrequency over TCP/IP.

2. Overview

Configuration for WTDnl "WireLess TelNet DownLoader":



3. Required Configuration

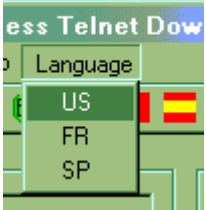

WTDnl Server	<ul style="list-style-type: none">• PC under Windows 95, 98, Me, NT or 2000• Ethernet card• TCP/IP Network configured
Spectrum 24 Network	<ul style="list-style-type: none">• Access Point connected to server• Spectrum 24 802.11 network configured
PDT Terminal	<ul style="list-style-type: none">• WTnVt Program

4. Installation

You should install WTDnl with the WireLessTelnet_Vxxx.exe setup procedure (WTDnl component) from the install CD, which will create a shortcut on the desktop and in the "Start / Programs / WireLess TelNet" menu.

If the computer has already got the required DLL's (MFC42) up-to-date, you can simply copy (WireLessTelNet\WTDnl and WireLessTelNet\WTDnl\Help) and launch the executable program.

5. Language

<p>* You can choose the language of WTDnl.</p>	
<p>* Under Windows 95, 98 and Me the language remains the same as the system's, and you cannot change it.</p>	
<p>* Under Windows NT or 2000 you can select another language than the system's. You need to restart the application for language changes to take place.</p>	

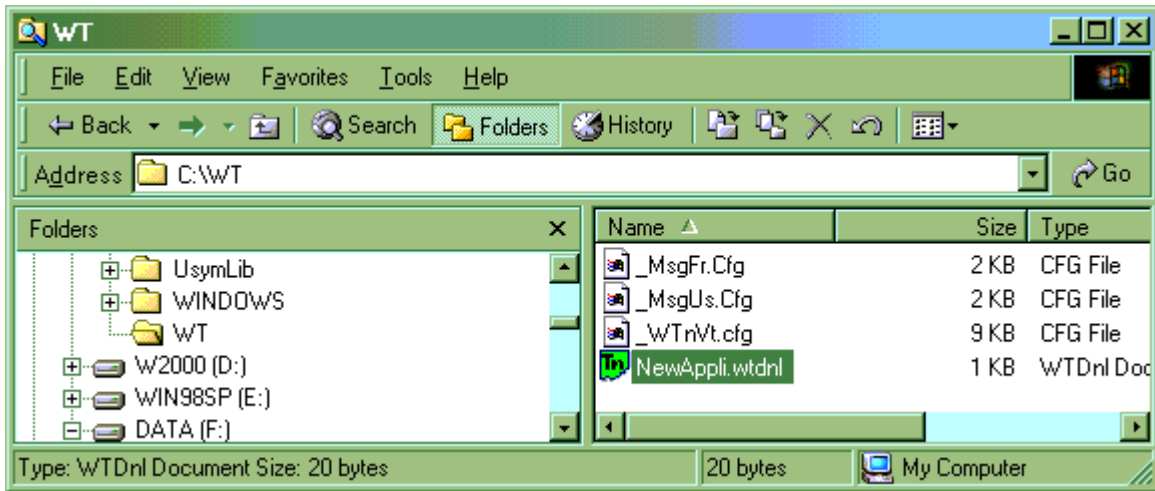
6. Starting

You have three options to start WTDnl:

- From the "Start / Programs / WTDnl" menu. (You need to open an existing settings profile or create a new one).
- From the WTDnl shortcut on the desktop. (You need to open an existing settings profile or create a new one).

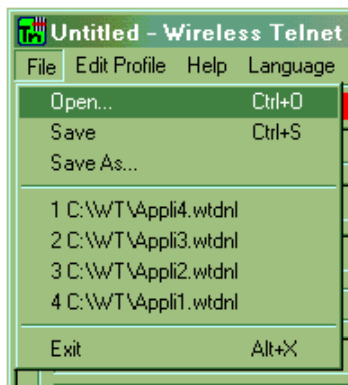


- From the Windows explorer by clicking over an existing ".wtdnl" file that stores the profile.

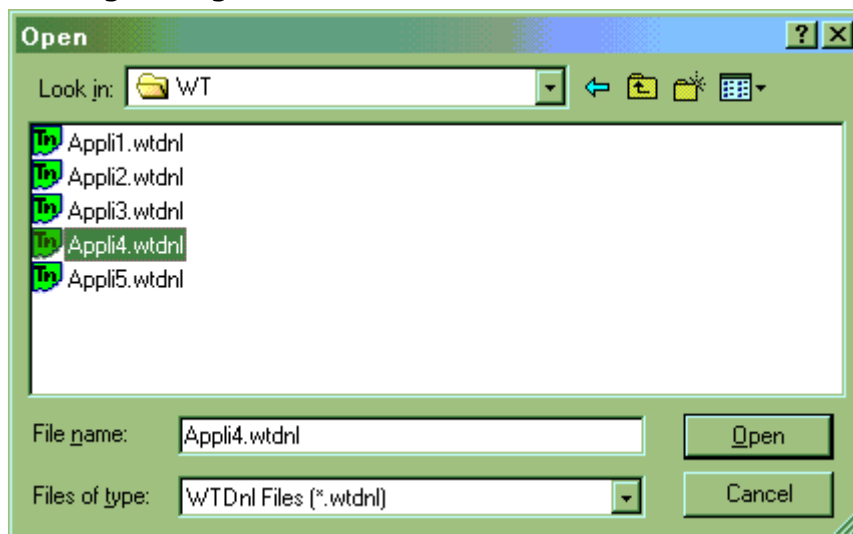


7. Open

The "File / Open" menu allows to find an existing settings profile (".wtdnl" file), by browsing the disk.



With the following dialog box:



8. Settings

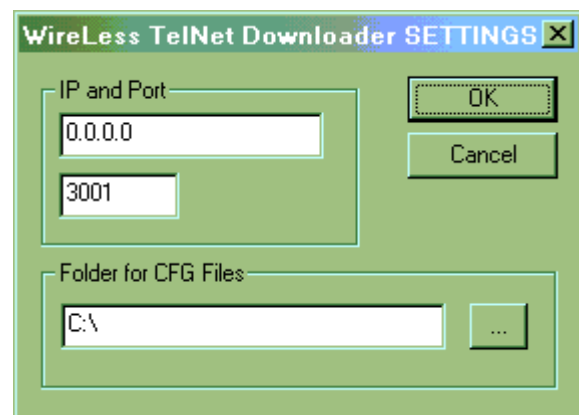
The "Edit Profile / Settings" menu allows to modify the present profile (".wtdnl") to download ".cfg" files into the PDT.

From the menu:

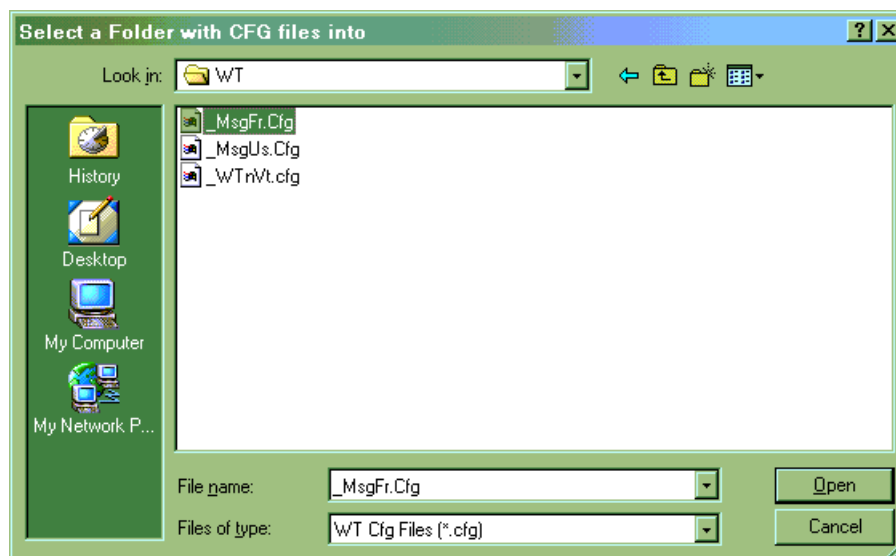


Modifying the present profile:

- The 0.0.0.0 IP address means that WTDnl works over all existing IP interfaces in the PC. Otherwise supply a specific IP address.
- The 3001 port is the WTDnl default port. If the application is in conflict with another program, you may modify it. (Don't forget to modify the default port in the PDT when downloading).
- The path points to the folder from which WTDnl reads the ".cfg" files. You may modify this by giving another name or by browsing with the [...] button.

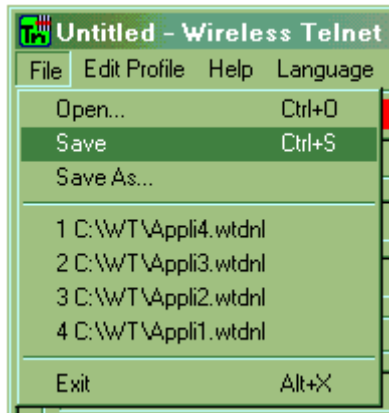


Look for the folder with the [...] button. Select a ".cfg" file and then click on the [Open] button.

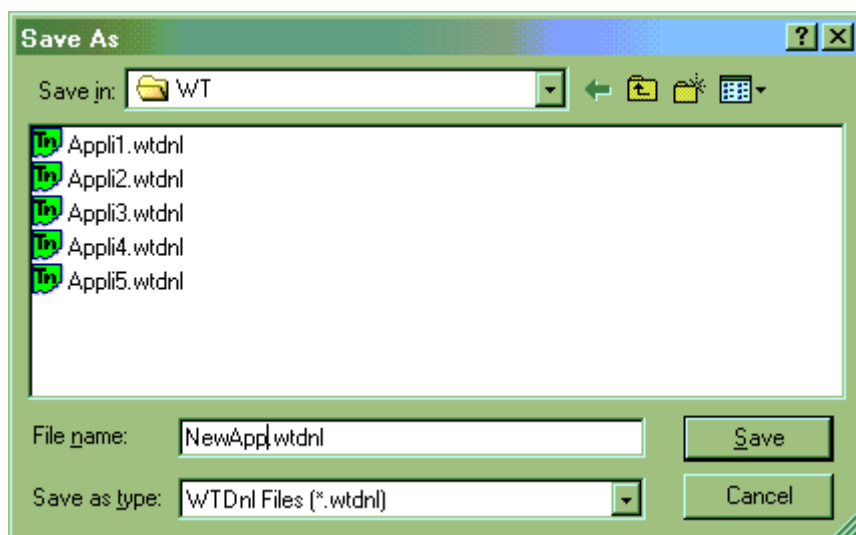


9. Saving

Save the new settings profile with the "File / Save" menu option.



In the following dialog box, give a new name to the settings profile file.



10. Downloading

When WTDnl is configured:

"Local IP Settings" box:

- Displays computer name.
- Displays the IP address (or ALL IP) from which WTDnl expects the requests.
- Displays the TCP/IP port.

"Path and Files" box:

- Displays the folder name for download.
- Displays a list of all the existing ".cfg" files in the download folder.

"Activity" box:

- Icon: **Green**=Waiting for connection, **Red and black**=Downloading, **Checked**=Program stopped.
- Display number of PDT's downloading.
- Operations display: **Listen OK**=the program found the IP interface and waits for requests, **Sending**=downloading files, **Sent OK**=the files have been downloaded.



In the PDT:

Select the option "Download / By Radio" and give the IP address of the server and the Port number. When download is done, the PDT goes to the main menu.