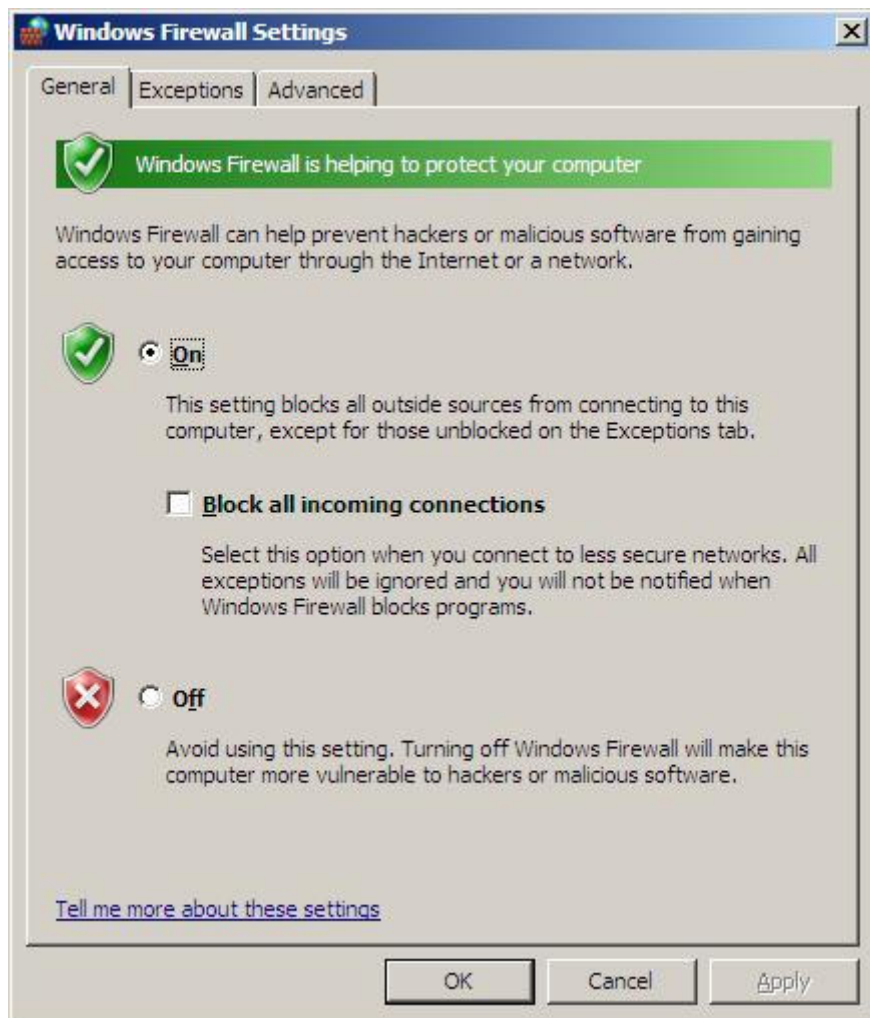
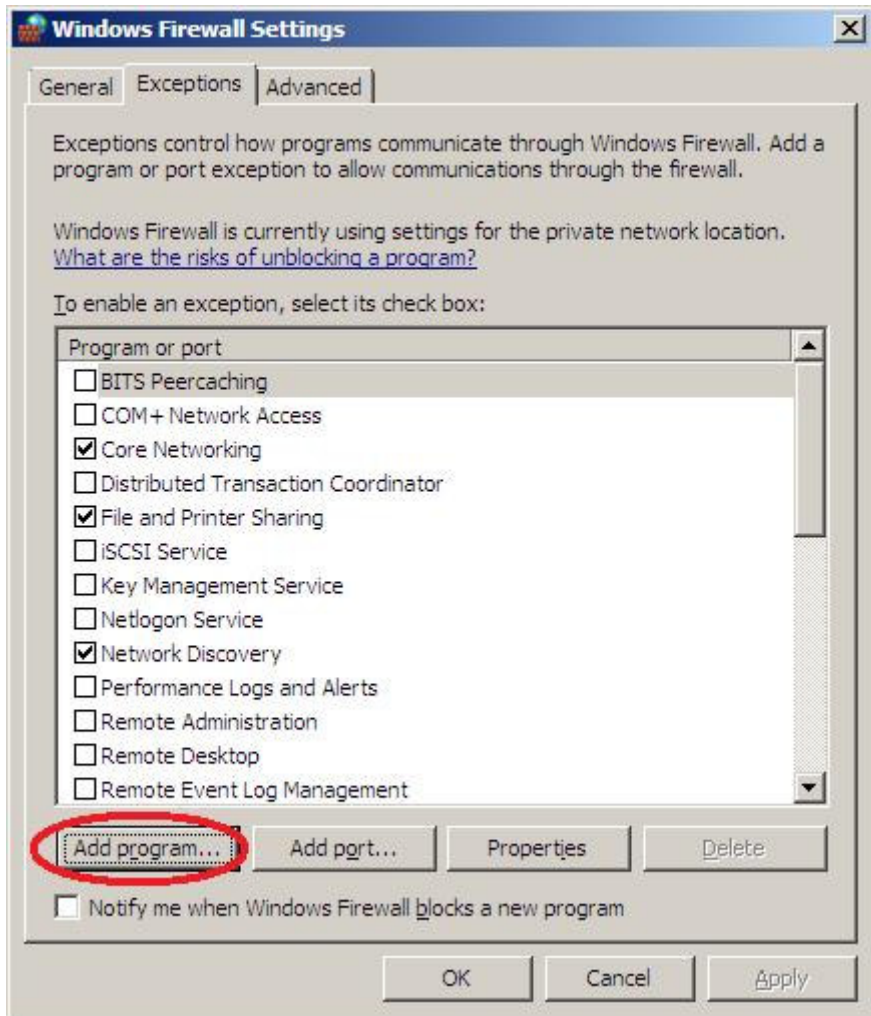


# WireLess Studio

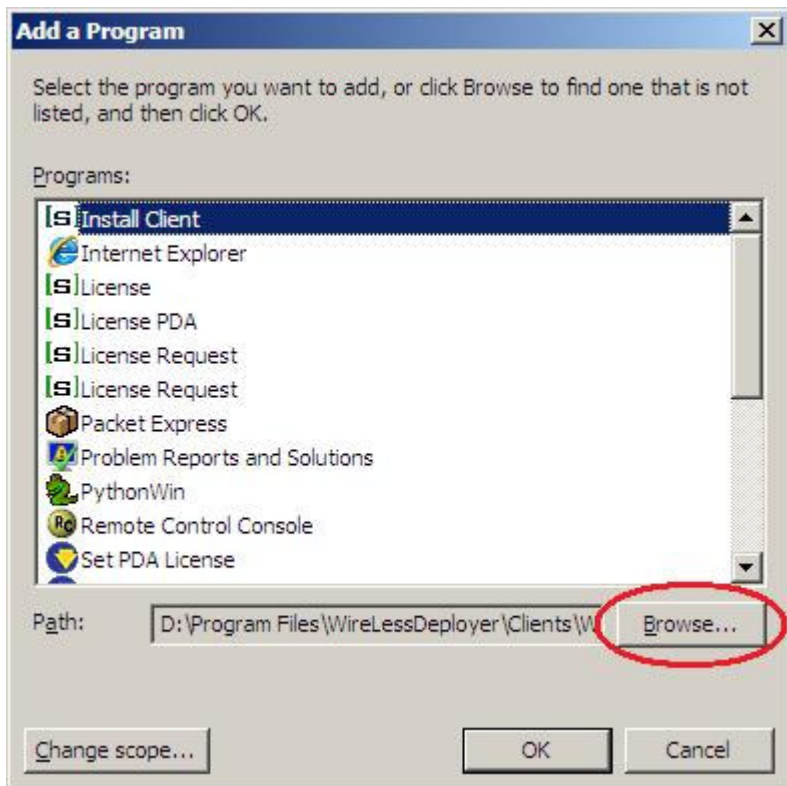
## Windows2008 Firewall configuration



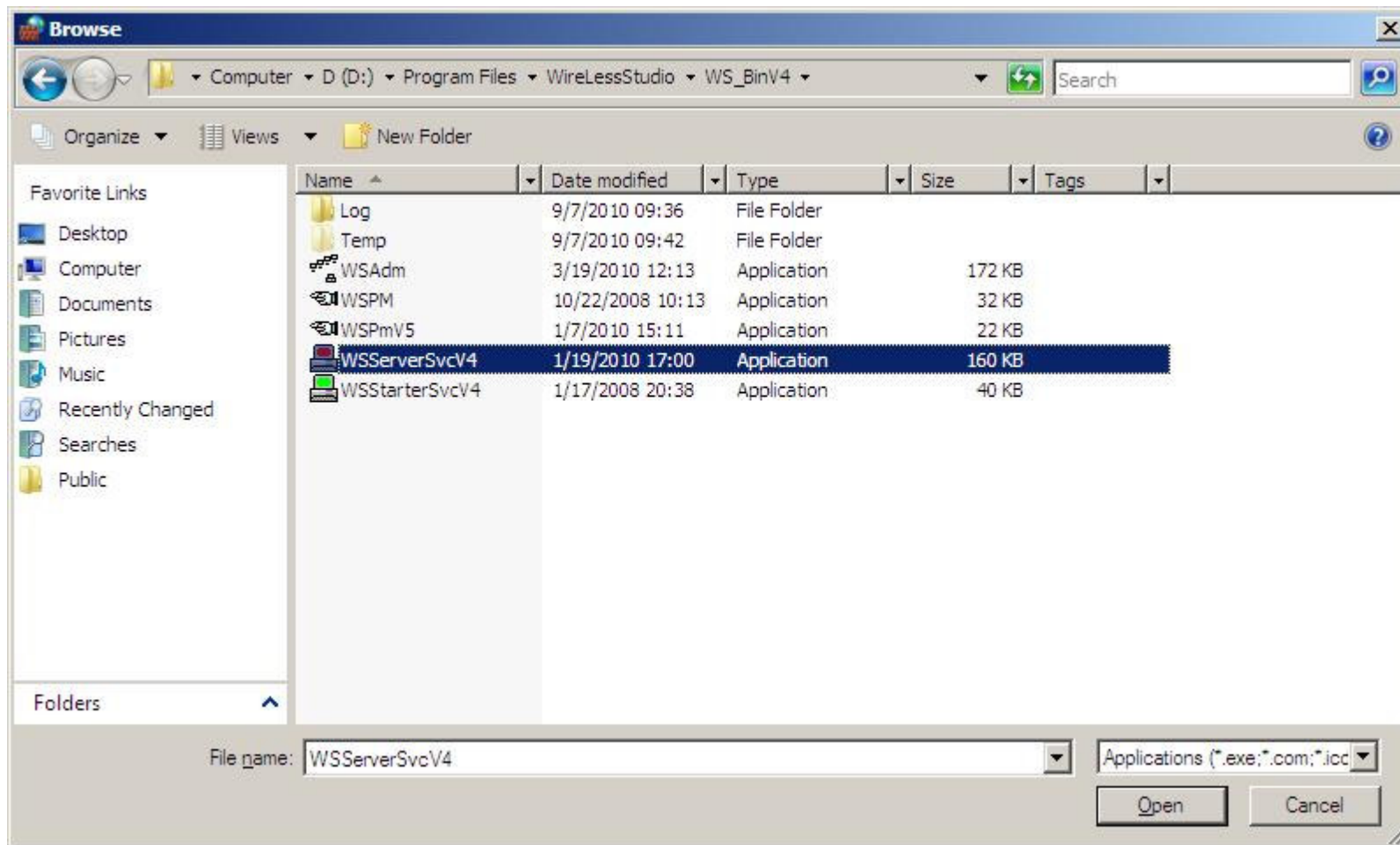
Turn on the firewall (default)



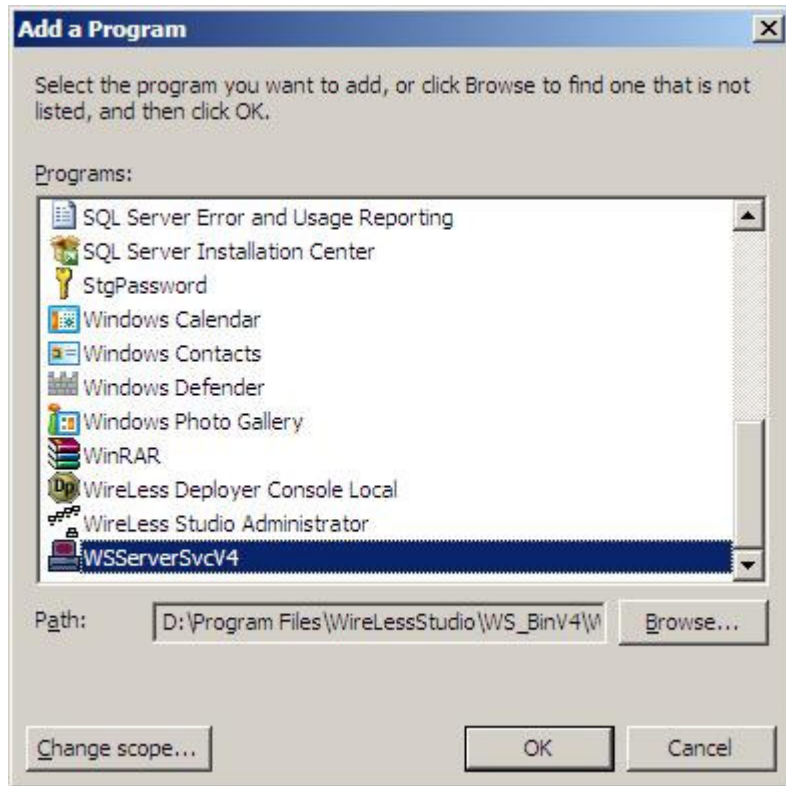
In exceptions tab, add the WireLess Studio programs



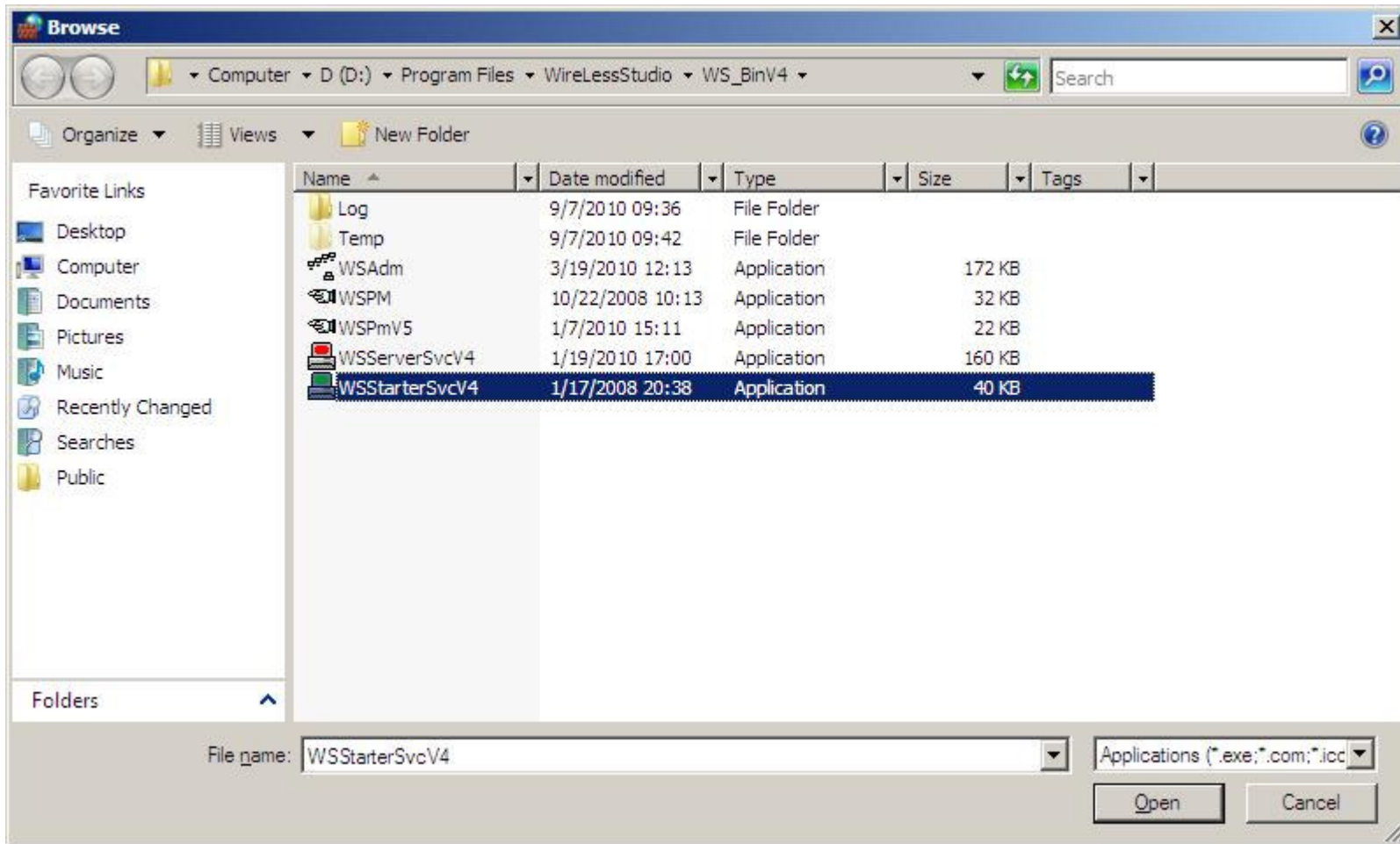
Browse to find the executables



add C:\Program Files\WireLessStudio\WS\_BinV4\WSServerSvcV4.exe

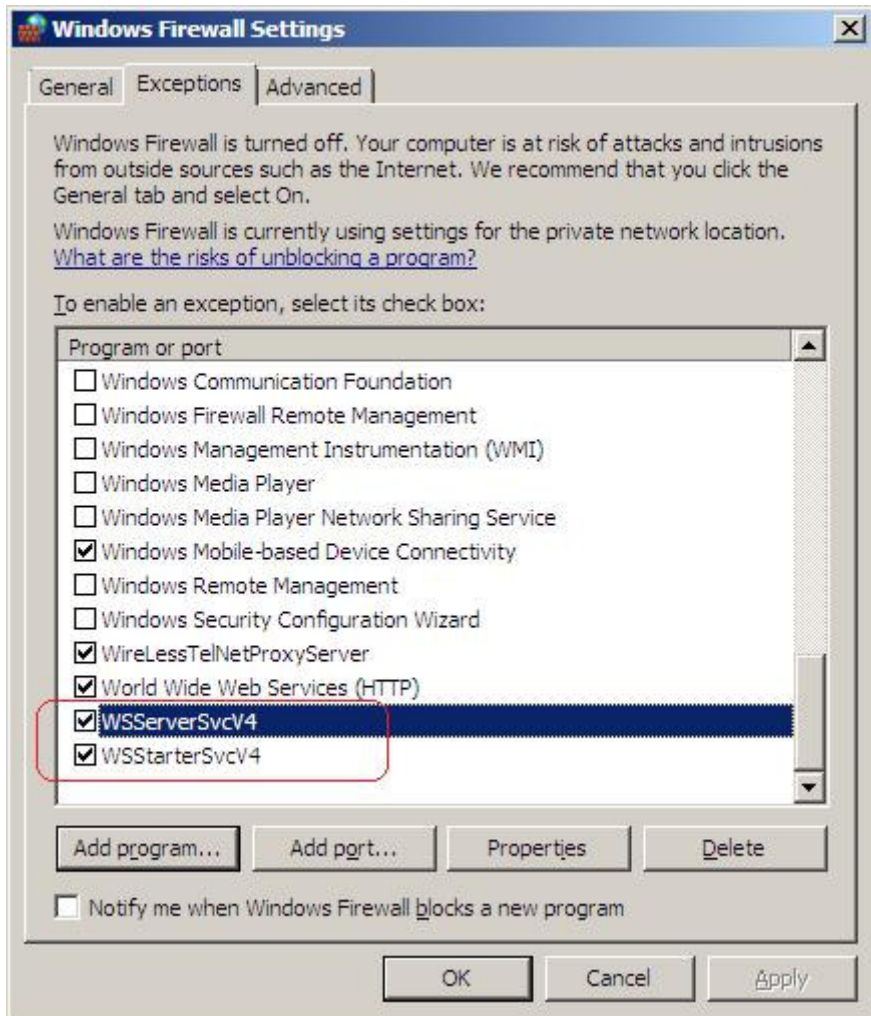


add it

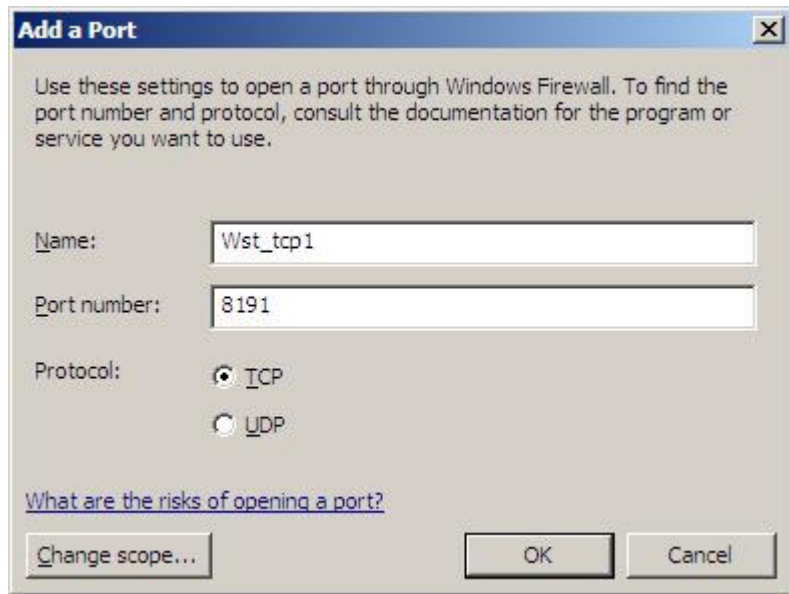


add C:\Program Files\WireLessStudio\WS\_BinV4\ WSSstarterSvcV4.exe



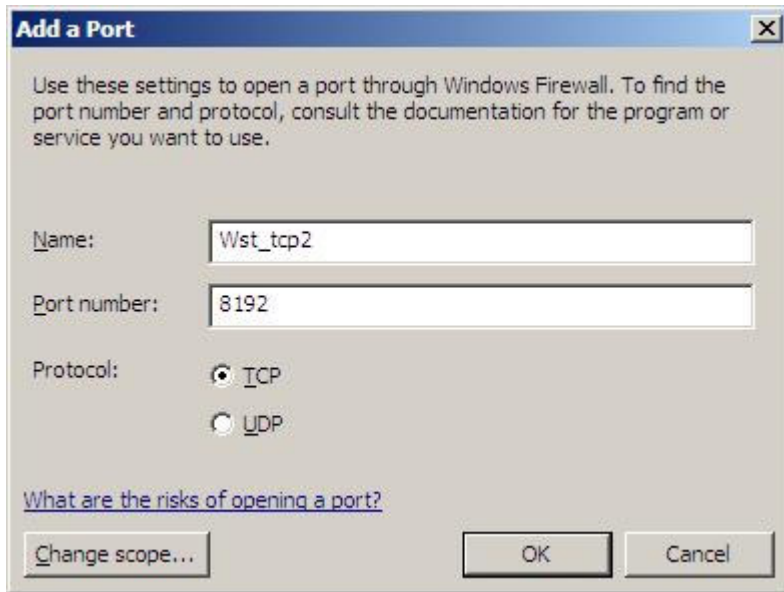


Verify that both programs are added (WSServerSvcV4.exe and WSStarterSvcV4.exe)

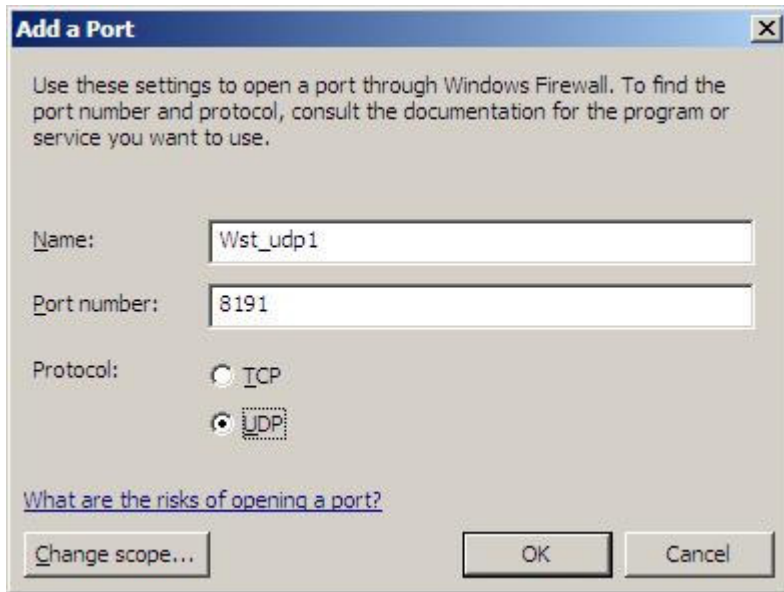


Add TCP port 8191

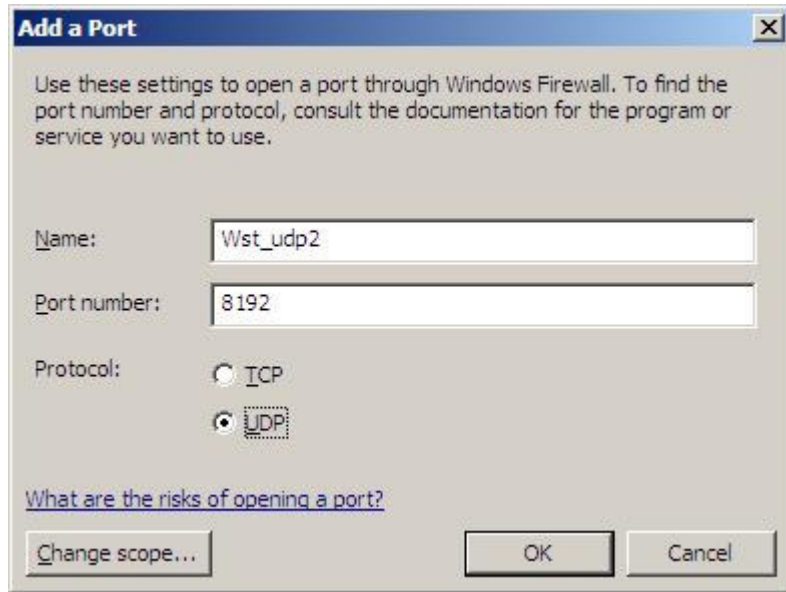




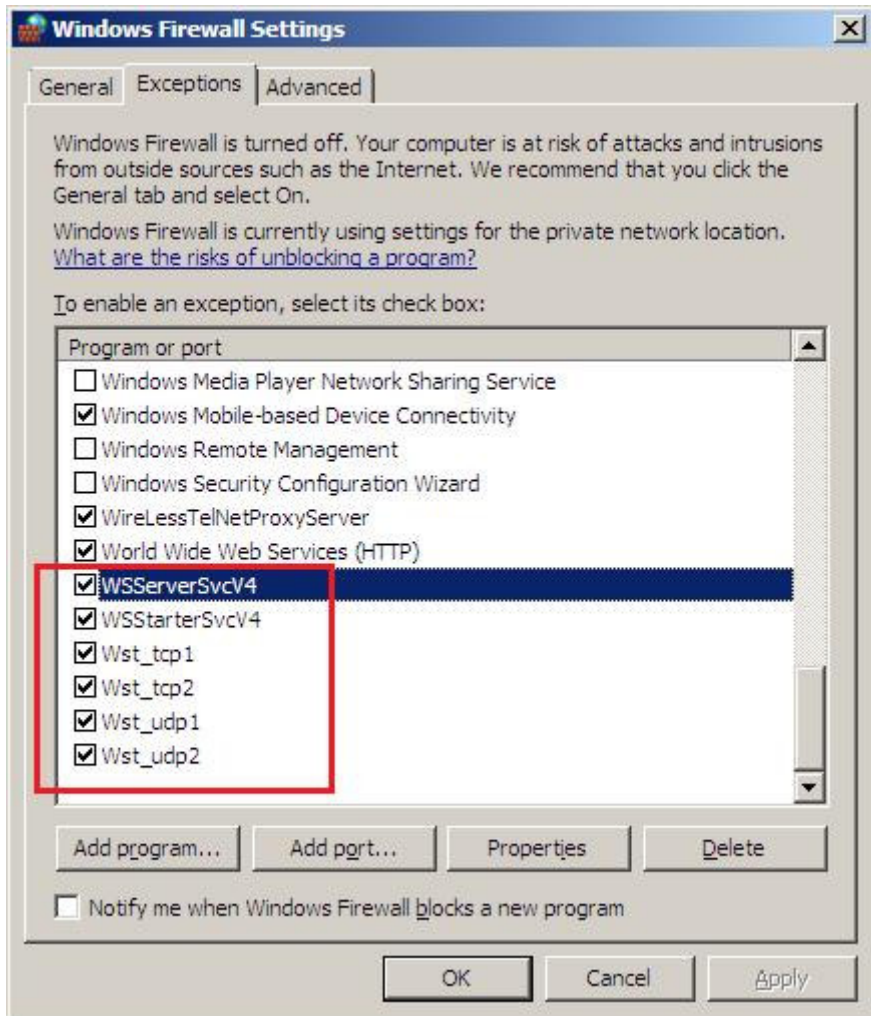
Add TCP port 8192



Add UDP port 8191



Add UDP port 8192



Verify that programs and ports are enabled.