



Server installation and administration guide

WMAdmServer.pdf

20051018 Version 1.0.0	Karina Spak
------------------------	-------------

INDEX

INDEX	2
IMPORTANT INFORMATION BEFORE INSTALLING	3
Systems Requirements	3
INSTALLATION	4
Complete Installation	4
Custom installation	8
TEST THE INSTALLATION	9
SERVER ADMINISTRATION.....	10
SYNCHRONIZATION LOGS	11

IMPORTANT INFORMATION BEFORE INSTALLING

1. Make sure you uninstall all previous installations of wireless mobile. (Don't forget to make a backup copy of **Xmlareapub** if you have any data)
2. You need python 2.4.1 and the windows extensions installed. You can download them from <http://www.softogo.com/mainsoftogo/en/mobiledownload.htm>

Systems Requirements

Hardware

CPU: PENTIUM CELERON 1 GH

RAM: 256 GB

DISK: 100 MB (OR MORE DEPENDING ON HOW MUCH DATA YOU WILL HAVE)

Software

Windows® 2000 family or Windows 2003 family or Windows XP family

+ IE 5.5 (or higher)

+ IIS installed.

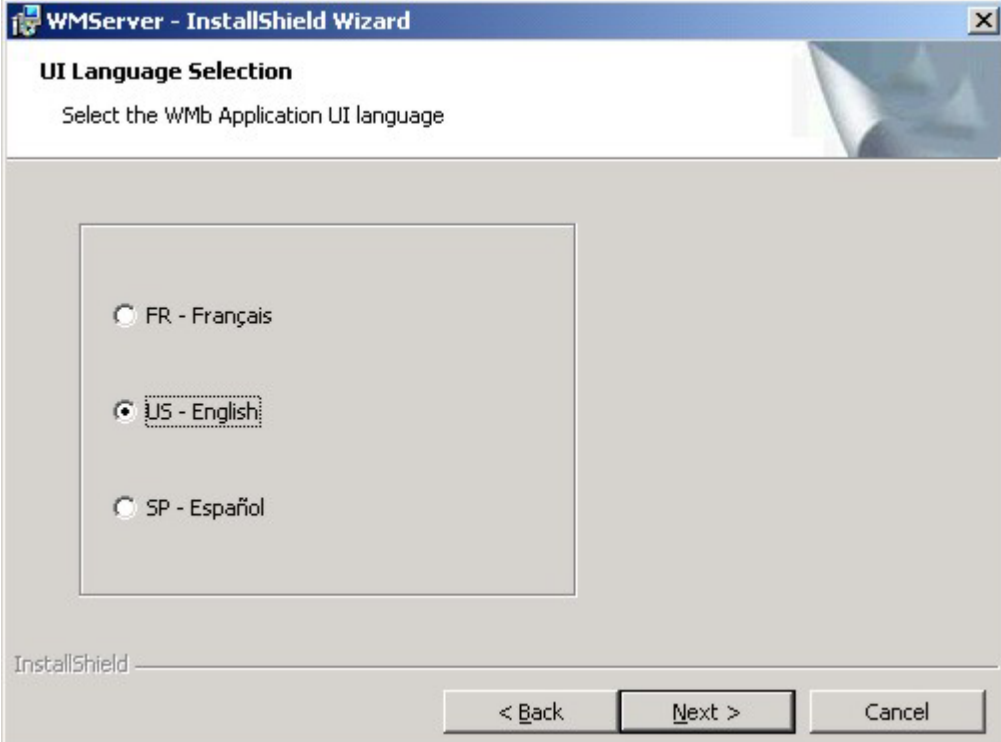
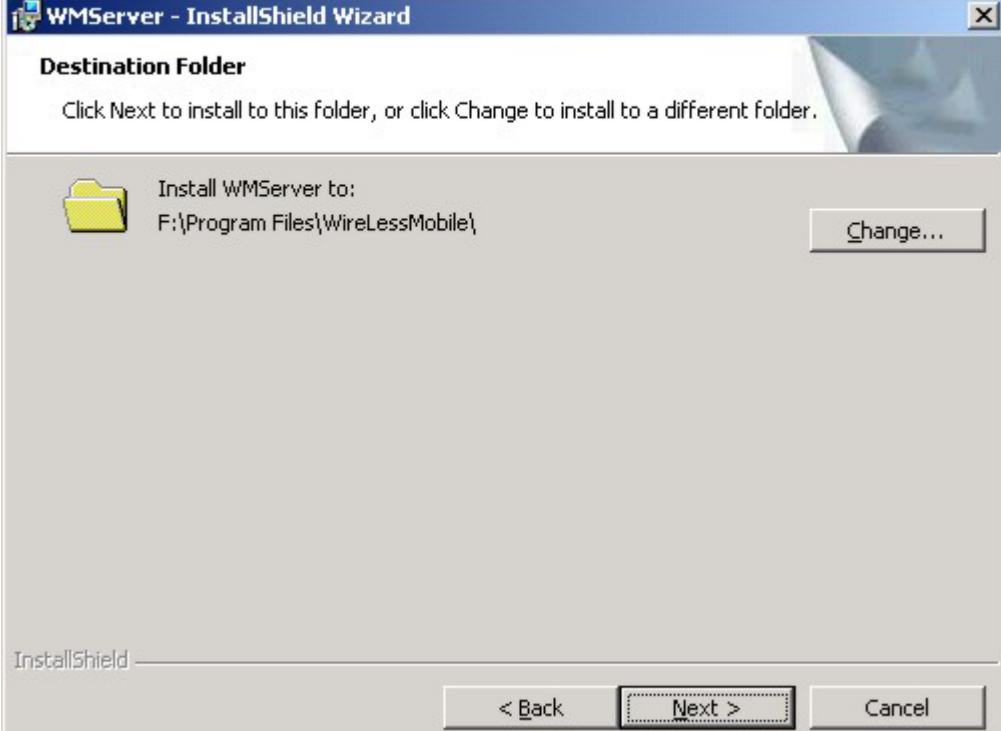
INSTALLATION

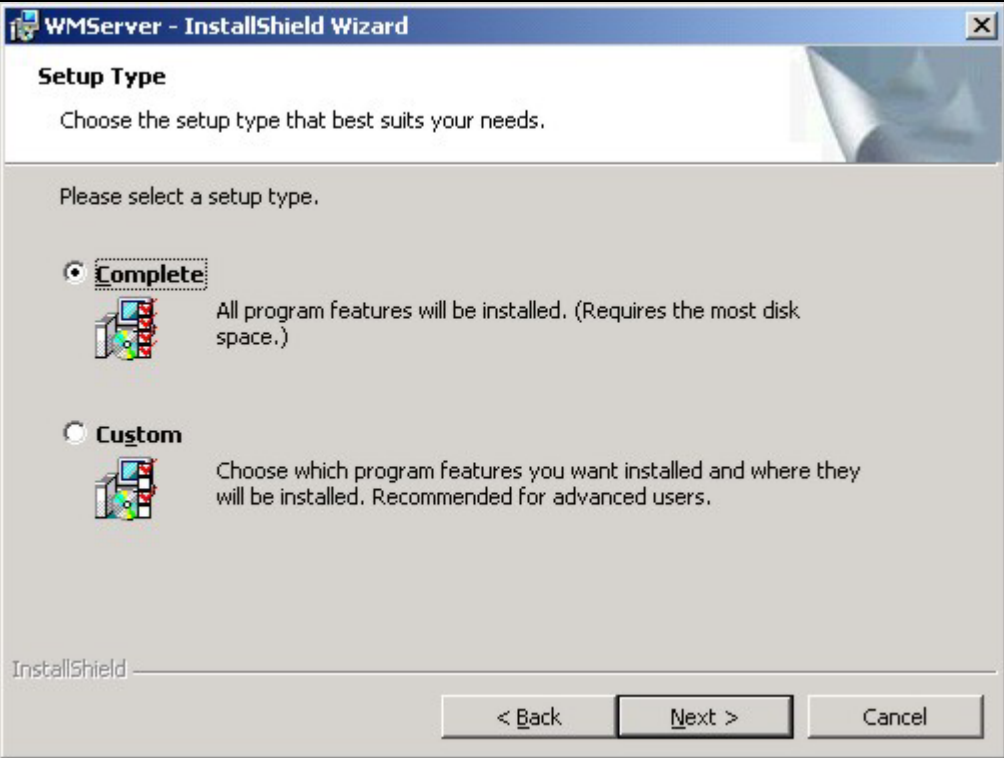
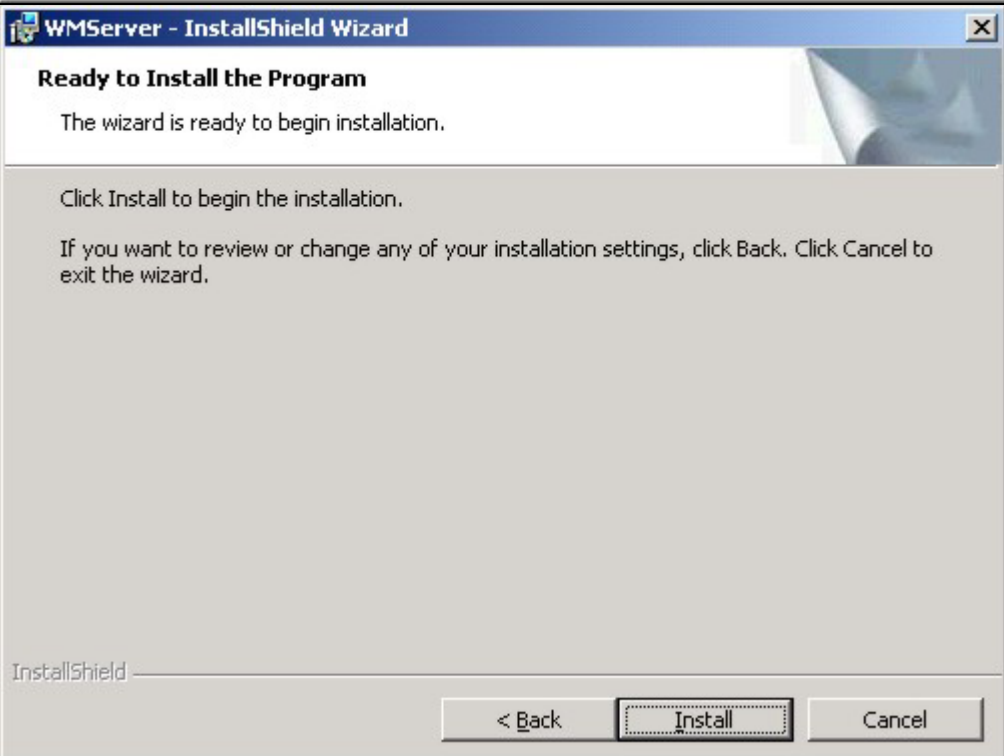
There are two types of installation, complete (all components will be installed) and custom (you can choose what components to install).

Complete Installation

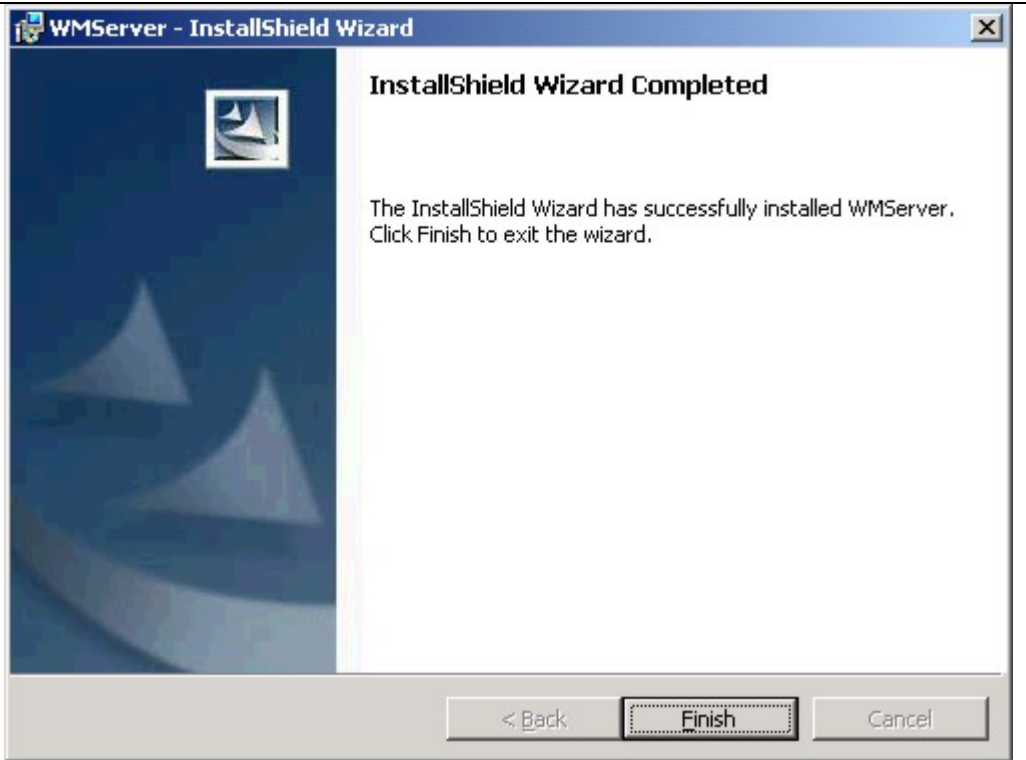
Double Click on the **WMserver400.msi** file for the installation to begin and follow the steps

<p>1.- Welcome Screen</p> <p>Click Next</p>	
--	---

<p>2.- Allows selecting the language for the installation program. Choose the same language as that of the OS.</p> <p>Click Next</p>	
<p>3.- Select the installation folder for the WireLess Mobile components.</p> <p>Click Change if you want to change the default installation folder.</p> <p>When you finish Click Next</p>	

<p>4.- Select Complete</p> <p>Click Next</p>	
<p>5.- Click Install</p>	

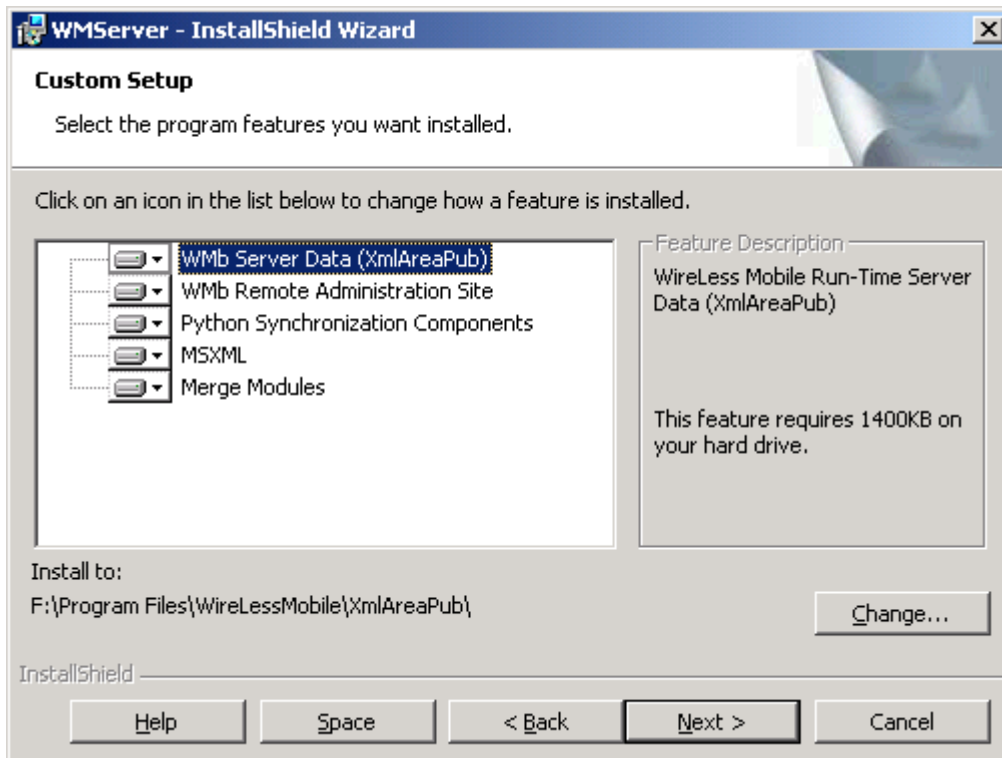
6.-
Click Finish



Custom installation

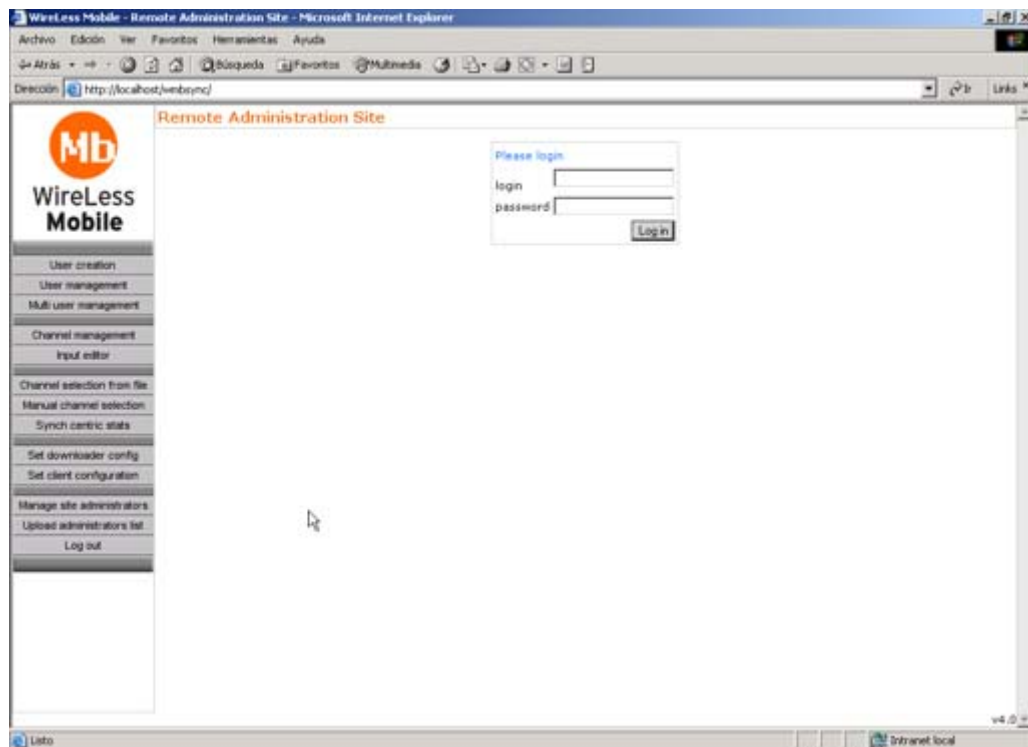
Follow steps 1, 2 and 3 of the complete installation. In step 4 choose **custom**.

The next screen will be displayed, where you can choose which components to install. After selecting the components click next and follow with steps 5 and 6 of the complete installation.



TEST THE INSTALLATION

- 1) Open your Browser.
- 2) Type <http://localhost/wmbsync> in the address bar (localhost can be replaced by the name or IP of the computer where you installed the server)
- 3) A page like this should appear. If it does, the installation was successful.



SERVER ADMINISTRATION

Next there is a brief description of the server site menu:

User Creation: Create new users for the PDA (WireLess Mobile Client).

User Management: Manage users for the PDA

MultiUser Management: Add and delete a quantity of users from a list of users and passwords from a text file.

Channel Management: Create and modify channels and channel options.

Input Editor: Edit the channel content, such as Forms, Binary Large Objects, etc.

Channel Selection from file: Associate users to channels through a text file.

Manual Channel Selection: Associate and dissociate users with channels.

Synch Centric Stats: Some statistics about synchronization.

Set Downloader Config and Set Client Configuration: generate the files *_wirelessmobile.cfg* and *_dnlce.cfg* which can be downloaded from the WireLess Mobile Client menu through the option: "Load New Configuration". They are used to config the User Menu and the Timer Synchronization settings.

Manage Site Administrators: Create and delete Administrator users for WireLess Mobile Server.

Upload Administrator List: The same as the last option but uploading a text file.

SYNCHRONIZATION LOGS

Some logs are created for each synchronization. These logs are used to trace possible errors in the channels. These logs can be found in the SyncLog subfolder of the path that you installed Wireless Mobile (i.e.: F:\ProgramFiles\WirelessMobile\SyncLog).

Trace modes: There are different levels of trace modes for the logs. The higher the trace mode number the more entries the log has (therefore the slower the synchronization is).

0: Fatal error, notes.
1: Error, fatal error, notes.
2: Warning, error, fatal error, notes, data.
3: Comments, warning, error, fatal error, notes, data.
4: Debug, comments, warning, error, fatal error, notes, data.

This number can be changed from the registry at the entry

HKEY_LOCAL_MACHINE/SOFTWARE/Wireless Mobile/Report/Tracemode

For normal production cycle, a trace mode of 1 should be enough. At channel programming cycle, a trace mode of 2 should do the job. If there is an error that you think that is from WirelessMobile itself, then you should change the trace mode to 4 and send the log to raissonance.

You can also change the folder where the logs are generated from the registry at the entry

HKEY_LOCAL_MACHINE/SOFTWARE/Wireless Mobile/Report/LogFolder