



WireLess**Mobile**

Client Configuration

Client Configuration Us.doc

20041202 Version 1.0 Us	
20060629 Version 5 Us	

Client Configuration

Abstract.

WireLess Mobile Client configuration can be updated from the menu options, as well from a .cfg file that the application will load to the Windows registry. This file is generated externally and can be transferred to the device through ActiveSync or by using the component *WireLess Mobile Downloader*.

WireLess Mobile Downloader works on HTTP, and is capable of downloading a set of files. One of them is the one called `_dnlce.cfg`, containing the names of the files to be downloaded, as well as the path to the application to return to, when the downloader exits.

One of the files whose name could be placed into `_dnlce.cfg` is `_wirelessmobile.cfg`. If this file were downloaded into the root folder of the device, Wireless Mobile Client would load all the entries in this file into the registry, and afterwards delete the file.

If `wirelessmobile.cfg` is downloaded into a flash folder and a file called `wm_readcfg.txt` (with any content) is downloaded to the “\Windows” folder then the application loads all the configuration file entries to the Windows Registry, the configuration file is not deleted, `wm_readcfg.txt` is.

Due to the fact that WireLess Mobile Client exits when it calls WireLess Mobile Downloader application, it is also possible to upgrade the version of WireLess Mobile Client, stating the executable file as one of the files to download.

Structure of `_dnlce.cfg`

The first line is always the same. The second one indicates the version number. For each line, the double character “%%” indicates that all of the following is a commentary, and is avoided by the Downloader. There are two sections. The name of the section is placed between square brackets. All the lines between two section names, or the ones beyond the last section name, are considered as part of the section that corresponds to the immediate previous section name statement.

All of the lines of a section share the same syntax:

Key = Value

One of the sections must be [DOWNLOADS]. This section contains a Key “Number” whose value is the number of files to download. Keys of the form “FileXX” must follow it, where XX (2 digits) goes from 01 to the number specified by the key “Number”. The structure of the “FileXX” key is:

File<XX>=[relative_url]source_file[, [absolute_path]destination_file]

relative_url is relative to the download page at which Web Downloader is connected to. If relative_url is absent, Downloader assumes it is the main page at which it is connected to.

source_file (mandatory): is the name of the file to be downloaded.

absolute_path: is the path the file is downloaded to. If absent, Web Downloader assumes it is the root folder (\) on the device.

destination_file: the name that Web Downloader will use to store the downloaded file. If absent, the original name will be used.

An optional section called [RETURN] can be placed. It consists only of one key "To" with the absolute path of the executable, which will be called on return. Wireless Mobile Client sets itself as the application to return to, from Downloader. So, if this file doesn't contain this section, downloader will return to WireLess Mobile Client by default.

Example:

```
%%FILE=_dnlce.cfg%%
%% V100

%% dnlce associated files for download
[DOWNLOADS]
Number=4
File01= _wirelessmobile.cfg
File02= AOBECDB , WM\AOBE.cdb
File03= WM/wm-app.ex_ , \WM\wm-app.exe
File04= WM/zip.dll_ , \zip.dll
File05= WM/unzip.dll_ , unzip.dll

[RETURN]
To= \Windows\WM\wm-app.exe
```

If _dnlce.cfg is hosted and accessible through http://my_site/dnl, and Web Downloader is configured to connect to this url, it will download the next files:

http://my_site/dnl/_wirelessmobile.cfg	to	_wirelessmobile.cfg
http://my_site/dnl/AOBECDB	to	\WM\AOBE.cdb
http://my_site/dnl/WM/wm-app.ex_	to	\WM\wm-app.exe
http://my_site/dnl/WM/zip.dll_	to	\zip.dll
http://my_site/dnl/WM/unzip.dll_	to	\unzip.dll

and it will return to the downloaded (upgraded) version of wm-app.exe.

Structure of _wirelessmobile.cfg

This file is intended to configure all of the settings likely of being configured in the device. The first line is always the same. The second one indicates the version number. For each line, the double character “%%” indicates that all of the following is

a commentary, and is avoided by the client. All the lines of a section share the same syntax:

Key = Value

Before processing keys and values, blank characters are removed, so it doesn't matter if leading and trailing spaces and tabs are used for arranging data in columns. Values can be NULL, indicating that the value will be empty.

There are several sections. The name of the section is placed between square brackets. All the lines between two section names, or the ones beyond the last section name, are considered as part of the section that corresponds to the immediate previous section name statement. All the entries above the first section are considered as having no section. The structure of sections and key-values can be considered as a one-to-one relationship with that in the registry. All sections that are not in the registry will be added. This is intended to work for both, the actual version of the client and for future ones. So eventually, web downloader will handle additional entries used by clients.

An example containing the settings used by the clients up to date is shown below.

```
%%FILE=_wirelessmobile.cfg%%
%% V100

%% Null Section Root of the tree. It will be stored into
%% HKEY_CURREN_USER\Software\\
%% 21 entries
[wm]
%% Running mode. Possible Values: Browser or Client
AppMode = browser
AppName = WireLess Mobile
%% Taskbar refresh rate. In client mode this is also the
%% background synchronization timer.
BackgroundTimer = 1
CabTitle = Wireless Mobile
CacheSize = 0
CreatorId = WMWM
EmptyDb = empty.cdb
Homepage = WM.html
%% Display confirmation message when pressing
%% the HOME icon.
HomepageConfirm = off
%% If HomepageConfirm is set to Yes,
%% this will be the message to be displayed.
HomepageConfirmText =
%% URL for the current homepage.
HomepageInit = http://10.10.10.23/default.htm
HomepageLogo = LogoWM.gif
%% Turns the SIP panel on or off.
Keyboard = on
%% If a keyboard type is selected you will be able to
```

```
%% navigate between controls.
KeyboardType = none
%% Current Mode
Mode = user
%% The application's language. Possible values:
%% ResAobeFr.dll, ResAobeEs.dll or ResAobeUs.dll
MsgDll = ResAobeUs.dll
OldInstallDir =
%% Folder for storing FormSubmit (Client Mode). It is
%% recommended that a persistant storage folder is used.
OutGoingDataLocation = \Windows\WM
%% Administrator password
Password =
%% Folder for storing pictures
%% Please type the absolute path with single backslashes.
%% Ex: \Windows\wm or \Application\Pictures
PhotoContainer = \windows\wm
%% Debugging modes, db,sync,qry,event,html,all,off.
Traque = off

%% 2 entries
%% This section configures the display options.
[wm\Screen]
%% Select or type width in pixels of the display.
Width = 320
%% Select or type height in pixels of the display.
Height = 320

%% 23 entries
%% This section configures the administrator mode
%% options.
[wm\AdminOptions]
%% Show the 'Activate Keyboard' option in the
%% administrator
%% mode menu. Possible Values: on or off.
ActivateKeyboard = on
%% Disable the 'Back' button in administrator mode.
%% Possible Values: on or off.
DisableNavBack = off
%% Disable the 'Forward' button in administrator mode.
%% Possible Values: on or off.
DisableNavForw = off
%% Disable the 'Refresh' button in administrator mode.
%% Possible Values: on or off.
DisableNavRefr = off
%% Enable the 'Last Synchronization...' option in the
%% administrator mode menu. Possible Values: on or off.
LastSync = off
%% Enable the 'Load New Configuration' option in the
%% administrator mode menu. Possible Values: on or off.
LoadNewConfig = on
```

```
%% Show the 'Activate Contextual Menu' option in the
%% administrator mode menu. Possible Values: on or off.
OptionsActivateContextMenu = on
%% Show the 'Fit To Screen' option in the administrator
%% mode menu. Possible Values: on or off.
OptionsFitToScreen = on
%% Show the 'Name of the Connection...' option in the
%% administrator mode menu. Possible Values: on or off.
OptionsNameOfTheConnection = off
%% Show the 'Sync Parameters...' option in the
%% administrator mode menu. Possible Values: on or off.
OptionsSyncParameters = off
%% Show the 'Text Size' option in the
%% administrator mode menu. Possible Values: on or off.
OptionsTextSize = on
%% Show the 'Quit' option in the administrator mode menu.
Quit = on
%% Show the 'Photo Selection to Send' option in the
%% administrator mode menu. Possible Values: on or off.
SelectPhotos = off
%% Show the 'Set Home Page' option in the administrator
%% mode menu. Possible Values: on or off.
SetHomePage = on
%% Show the 'Set Outgoing Data Location' option in the
%% administrator mode menu. Possible Values: on or off.
SetOutgoingDataLocation = off
%% Show the 'Sync options and icons' in the administrator
%% mode menu. Possible Values: on or off.
SyncOptions = off
%% Show the 'Back' button on the toolbar
%% in administrator mode. Possible Values: on or off.
ToolbarNavBack = on
%% Show the 'Forward' button on the toolbar
%% in administrator mode. Possible Values: on or off.
ToolbarNavForw = on
%% Show the 'Home' button on the toolbar
%% in administrator mode. Possible Values: on or off.
ToolbarNavHome = on
%% Show the 'Refresh' button on the toolbar
%% in administrator mode. Possible Values: on or off.
ToolbarNavRefr = on
%% Show the 'RF Status' icon on the toolbar
%% in administrator mode. Possible Values: on or off.
ToolbarRadFreq = on
%% Show the 'Synchronize All Channels' icon on the toolbar
%% in administrator mode. Possible Values: on or off.
ToolbarSyncAll = off
%% Show the 'Synchronize Current Channel' icon on the
%% toolbar in administrator mode.
ToolbarSyncOne = off
```

```
%% 25 entries
%% This section configures the user mode options.
[wm\UserOptions]
%% Show the 'Activate Keyboard' option
%% on the user mode menu. Possible Values: on or off.
ActivateKeyboard = on
%% Show the taskbar in user mode
%% or only the battery icon. Possible Values: on or off.
CommandBar = on
%% Disable the 'Back' button in user mode.
DisableNavBack = off
%% Disable the 'Forward' button in user mode.
DisableNavForw = off
%% Disable the 'Refresh' button in user mode.
DisableNavRefr = off
%% Enable the 'Last Synchronization'... option in the
%% user mode menu. Possible Values: on or off.
LastSync = off
%% Enable the 'Load New Configuration' option in the
%% user mode menu. Possible Values: on or off.
LoadNewConfig = on
%% Show the 'Activate Contextual Menu' option in the
%% user mode menu. Possible Values: on or off.
OptionsActivateContextMenu = off
%% Show the 'Fit To Screen' option in the user mode menu.
OptionsFitToScreen = off
%% Show the 'Name of the Connection...' option in the
%% user mode menu. Possible Values: on or off.
OptionsNameOfTheConnection = off
%% Show the 'Sync Parameters...' option in the user mode
%% menu. Possible Values: on or off.
OptionsSyncParameters = off
%% Show the 'Text Size' option in the user mode menu.
OptionsTextSize = on
%% Show the 'Quit' option in the user mode menu.
Quit = on
%% Show the 'Photo Selection to Send' option in the user
%% mode menu. Possible Values: on or off.
SelectPhotos = off
%% Show the 'Set Home Page' option in the user mode menu.
SetHomePage = off
%% Show the 'Set Outgoing Data Location' option in the
%% user mode menu. Possible Values: on or off.
SetOutgoingDataLocation = off
%% Show the 'Sync All Channels' options and icons in the
%% user mode menu. Possible Values: on or off.
SyncAllChannels = off
%% Show the 'Sync Current Channel' options and icons
%% in the user mode menu. Possible Values: on or off.

SyncCurrentChannel = off
```

```
%% Show the 'Back' button on the toolbar in user mode.
ToolbarNavBack = off

%% Show the 'Forward' button on the toolbar in user mode.
ToolbarNavForw = off
%% Show the 'Home' button on the toolbar in user mode.
ToolbarNavHome = off
%% Show the 'Refresh' button on the toolbar in user mode.
ToolbarNavRefr = off
%% Show the 'RF Status' icon on the toolbar in user mode.
ToolbarRadFreq = off
%% Show the 'Synchronize All Channels' icon on the toolbar
%% in user mode. Possible Values: on or off.
ToolbarSyncAll = off
%% Show the 'Synchronize Current Channel' icon in the
%% toolbar in user mode. Possible Values: on or off.
ToolbarSyncOne = off

%% 3 entries
%% This key lists the possible urls to be selected
%% as homepages.
[wm\Hp]
%% from hp0 to hp9: up to 10, possible set homepage
dialog from the option menu

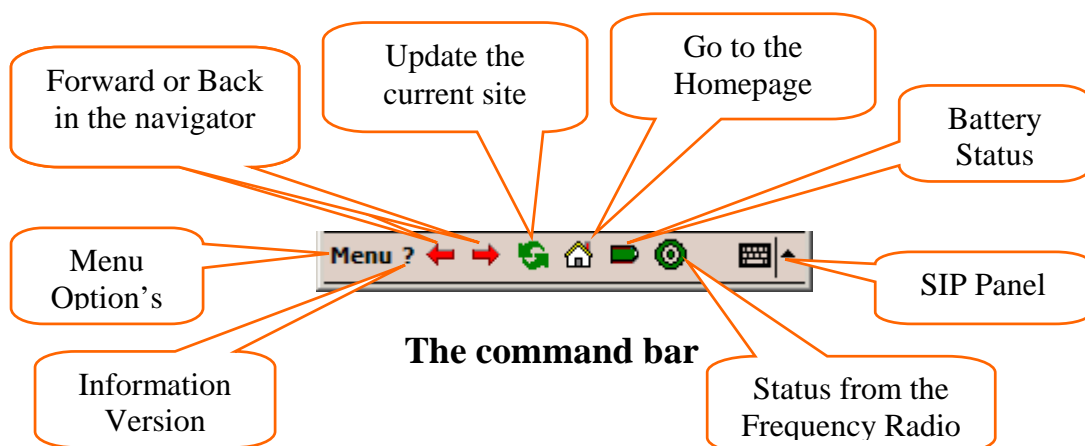
hp0    = http://200.80.42.111
hp1    = http://ppc.softogo.com
hp2    = http://10.10.10.23/default.htm
%% 5 entries
[LoginDlg]
TitleLbl      = WM
PasswdLbl     = Password
LogoFilename  = SOFTOGO.gif
LoginLbl      = Login
AutoChangeUser = off
%% 4 entries
[Servers]
DeviceType    = ppc02
ConnectionName = WMCon
AutoDial      = off
ConnectionType = ras
%% 3 entries
[Servers\srvWM]
URL =
http://10.10.10.15/wm_fr/PalmSynchro/PalmSynchSrv.asp
PWD = 41de8b
UID = UserId

%% The device will be forced to perform a warmboot to
%% apply the new configuration.
[Warboot]
```

User And Admin Options

There are two sections, one for configuring the User Menu: [wm\UserOptions] and one for the Administrator Menu: [wm\AdminOptions], which have the following keys:

- ActivateKeyboard,
- DisableNavBack,
- DisableNavForw,
- DisableNavRefr,
- LastSync,
- LoadNewConfig,
- OptionsActivateContextMenu,
- OptionsFitToScreen,
- OptionsNameOfTheConnection,
- OptionsSyncParameters,
- OptionsTextSize,
- SelectPhotos
- SetHomePage,
- SetOutgoingDataLocation,
- SyncCurrentChannel,
- SyncAllChannels,
- ToolbarNavBack,
- ToolbarNavForw,
- ToolbarNavHome,
- ToolbarNavRefr,
- ToolbarRadFreq,
- ToolbarSyncOne,
- ToolbarSyncAll,
- Quit



If any of these keys do not exist or contains a value other than “on” (no matter about case), the user menu will not contain that option, or the command bar. In any other situation, the user menu will have activated the corresponding option or the command bar as well.

An example for the file `_wirelessmobile.cfg` is shown below, containing some configuration, and then the results of that configuration after applied.

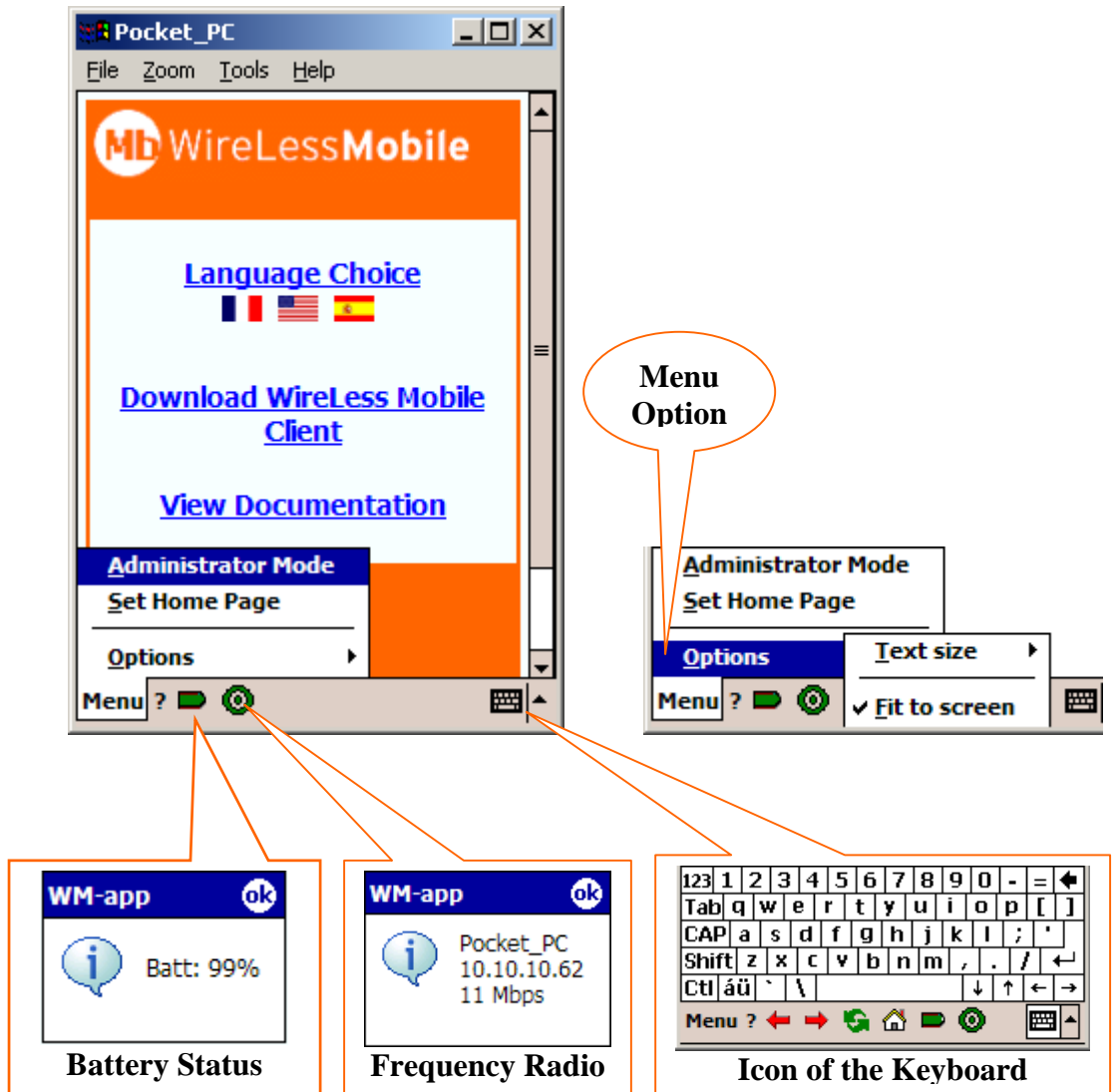
```
%% FILE=_wirelessmobile.cfg%%
%% V100

[wm\AdminOptions]
%% Up to 23 entries
ActivateKeyboard           = off
SyncCurrentChannel        = off
SyncAllChannels           = off
LastSync                   = off
ToolbarSyncOne            = off
ToolbarSyncAll            = off
SetHomePage               = on
SetOutgoingDataLocation   = off
OptionsTextSize           = on
OptionsFitToScreen        = on
OptionsActivateContextMenu = off
OptionsSyncParameters     = off
OptionsNameOfTheConnection = off
LoadNewConfig             = on
DisableNavBack            = off
DisableNavForw            = off
DisableNavRefr            = off
SelectPhotos              = off
SetOutgoingDataLocation   = off
ToolbarNavBack            = on
ToolbarNavForw            = on
ToolbarNavHome            = on
ToolbarNavRefr            = on
ToolbarRadFreq            = on
Quit                       = on

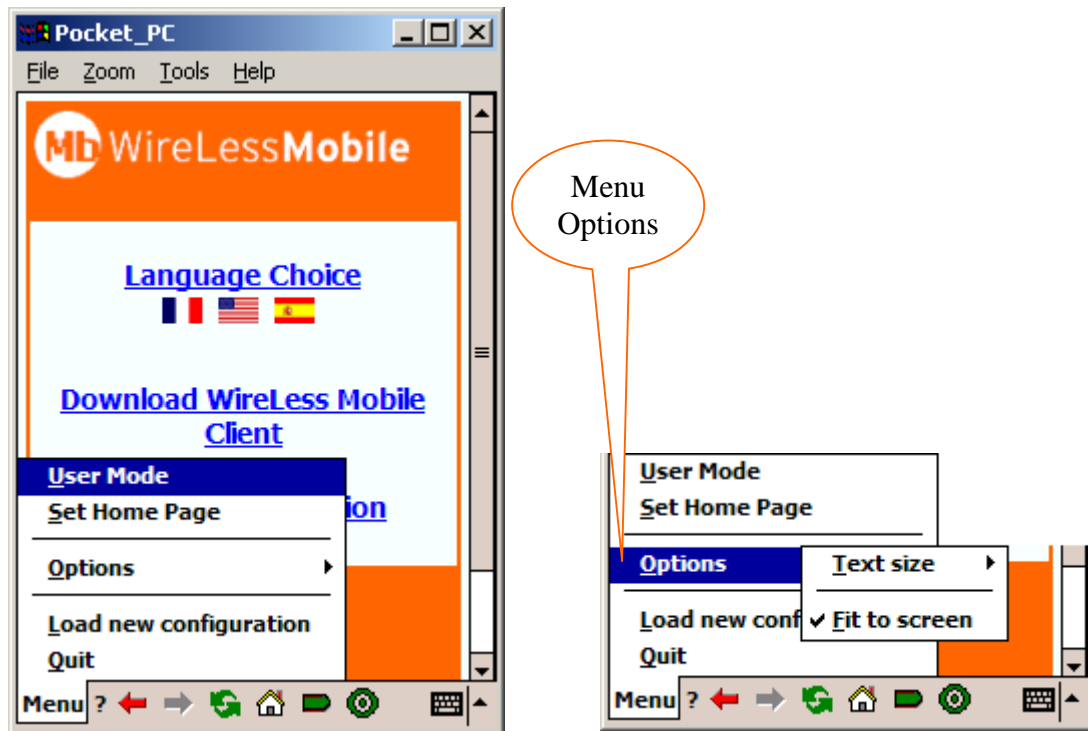
[wm\UserOptions]
ActivateKeyboard           = off
SyncCurrentChannel        = off
SyncAllChannels           = off
LastSync                   = off
ToolbarSyncOne            = off
ToolbarSyncAll            = off
SetHomePage               = on
SetOutgoingDataLocation   = off
OptionsTextSize           = on
OptionsFitToScreen        = on
OptionsActivateContextMenu = off
OptionsSyncParameters     = off
OptionsNameOfTheConnection = off
LoadNewConfig             = off
DisableNavBack            = off
DisableNavForw            = off
DisableNavRefr            = off
SelectPhotos              = off
SetOutgoingDataLocation   = off
```

ToolbarNavBack	= off
ToolbarNavForw	= off
ToolbarNavHome	= off
ToolbarNavRefr	= off
ToolbarRadFreq	= on
Quit	= off

Menu of the User Mode:



Menu of the Administrator mode:



User and Administrator Configuration Options :

ActivateKeyboard

Show the 'Activate Keyboard' option in the user mode menu.

DisableNavBack

Disable the 'Back' button in user mode.

DisableNavForw

Disable the 'Forward' button in user mode.

DisableNavRefr

Disable the 'Refresh' button in user mode.

LastSync

Enable the 'Last Synchronization'...

LoadNewConfig

Enable the 'Load New Configuration' option.

OptionsActivateContextMenu,

Show the 'Activate Contextual Menu' option.

Option FitToScreen,

Show the 'Fit To Screen' option.

Option NameOfTheConnection,

Show the 'Name of the Connection...!'.

Option SyncParameters,

Show the 'Sync Parameters...' option.

Option TextSize,

Show the 'Text Size' option.

SelectPhotos

Show the 'Photo Selection to Send' option.

SetHomePage,

Show the 'Set Home Page' option

SetOutgoingDataLocation,

Show the 'Set Outgoing Data Location' option.

SyncCurrentChannel,

Show the 'Sync Current Channel' options and icons.

SyncAllChannels,

Show the 'Sync All Channels' options and icons.

ToolbarNavBack,

Show the 'Back' button on the toolbar.

ToolbarNavForw,

Show the 'Forward' button on the toolbar.

ToolbarNavHome,

Show the 'Home' button on the toolbar.

ToolbarNavRefr,

Show the 'Refresh' button on the toolbar

ToolbarRadFreq,

Show the 'RF Status' icon on the toolbar.

ToolbarSyncOne,

Show the 'Synchronize Current Channel' icon on the toolbar.

ToolbarSyncAll,

Show the 'Synchronize All Channels' icon on the toolbar.

Quit

Show the 'Quit' option.