



WireLess**Flex**Browser

Installation Manual

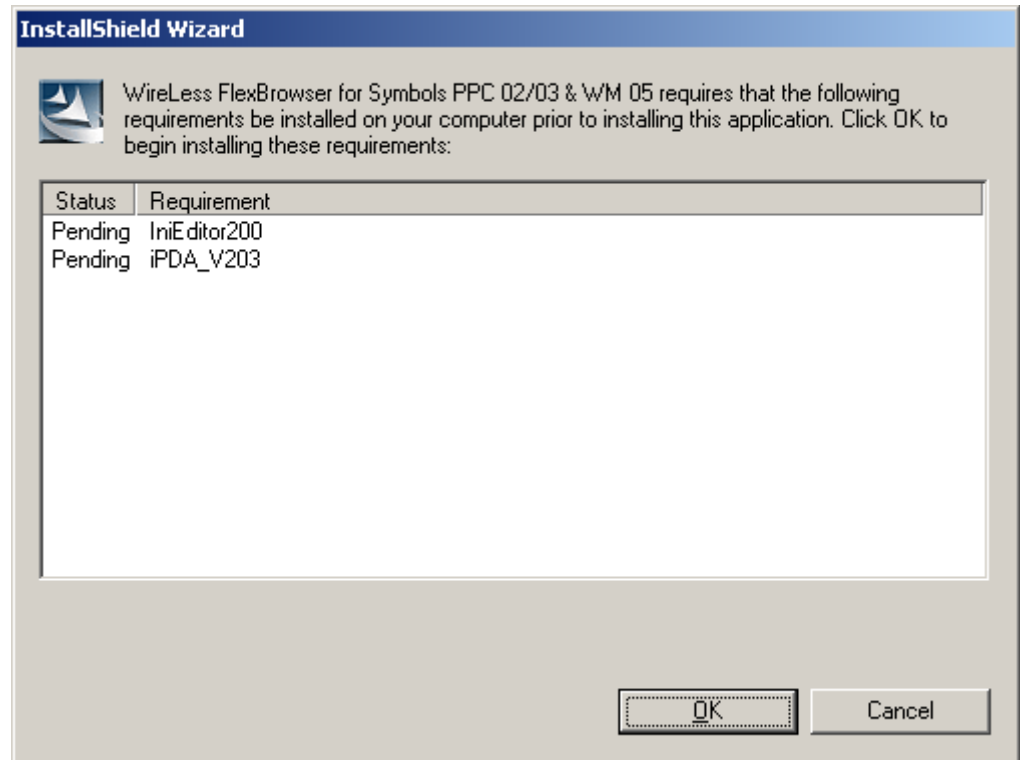
wfb_installation_en.doc

20060720 Version 5.0 En	
-------------------------	--

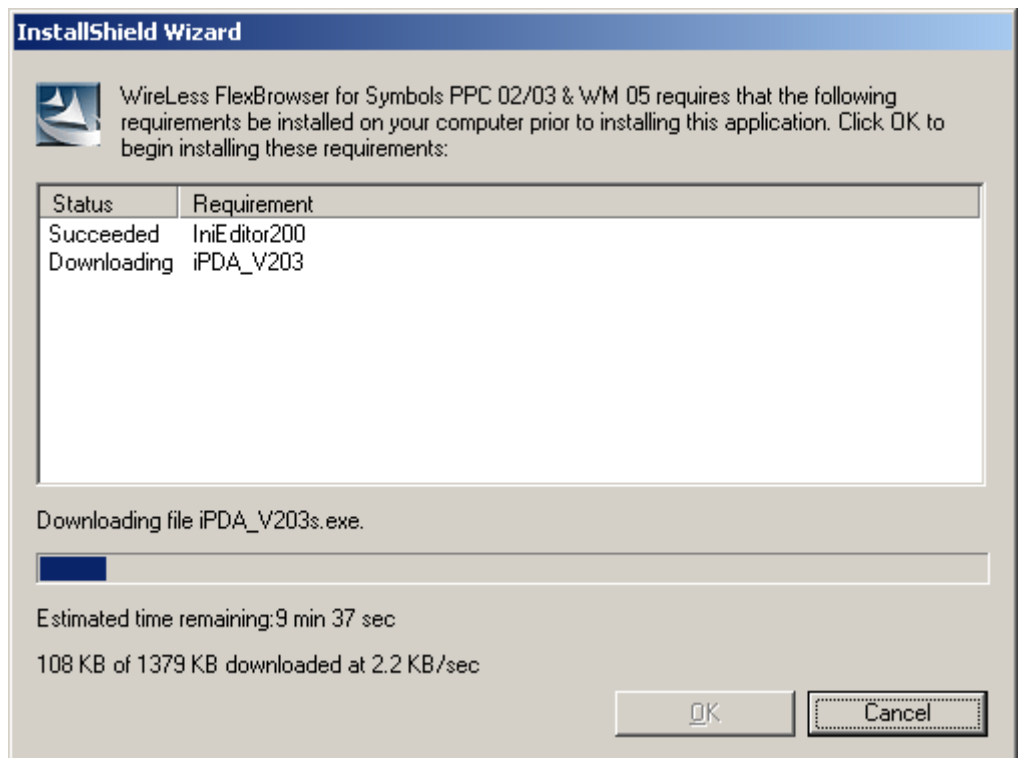
Browser Installation

Browser Installation with IniEditor or iPDA not installed

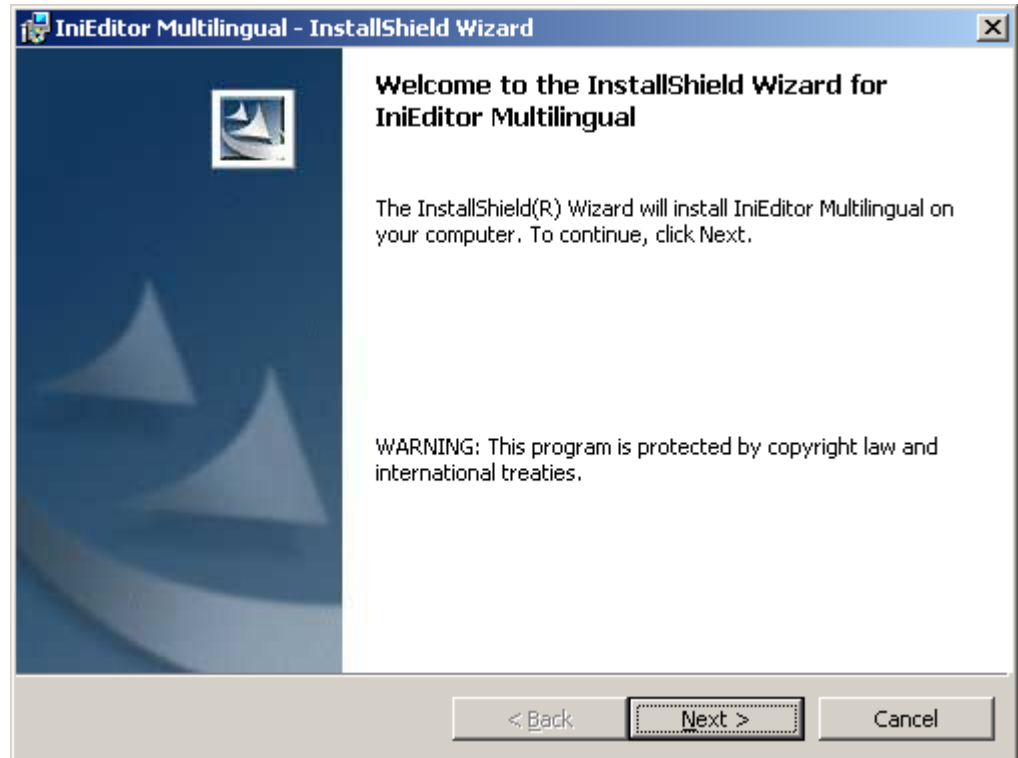
If IniEditor or iPDA are not installed on your system, you will be prompted to do so. If the latest IniEditor version or iPDA version is already installed, the installation program will continue on the next step.
[\(Continue on page 4\)](#):



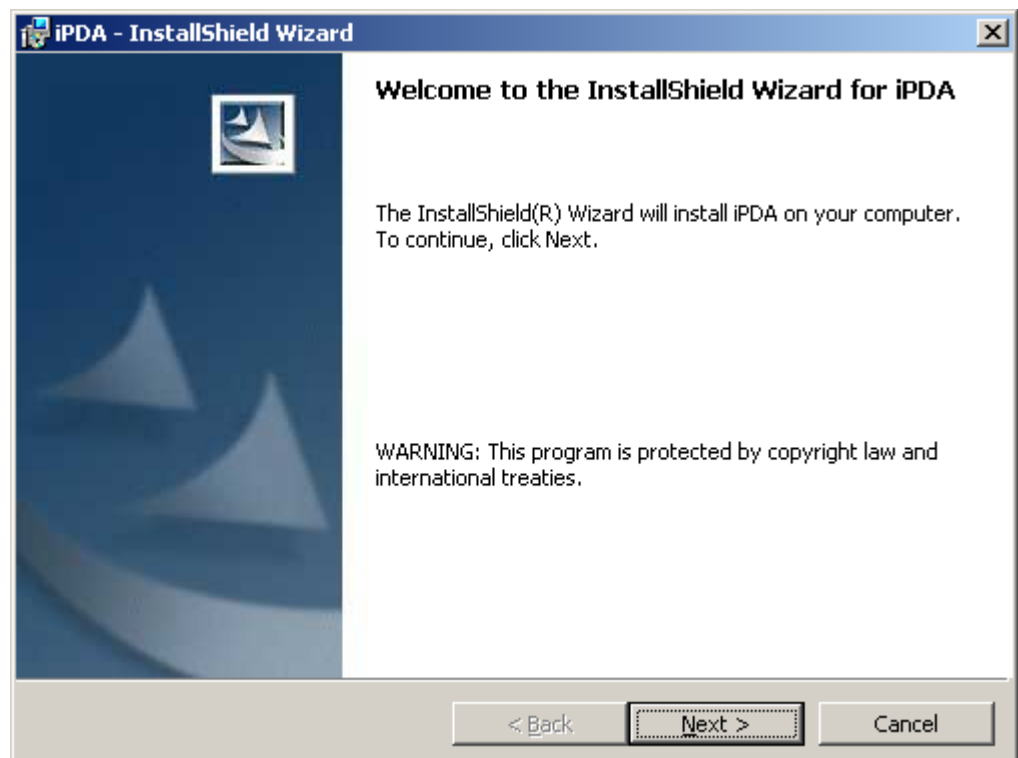
The program will install or update IniEditor and/or iPDA:



The main installation of the IniEditor

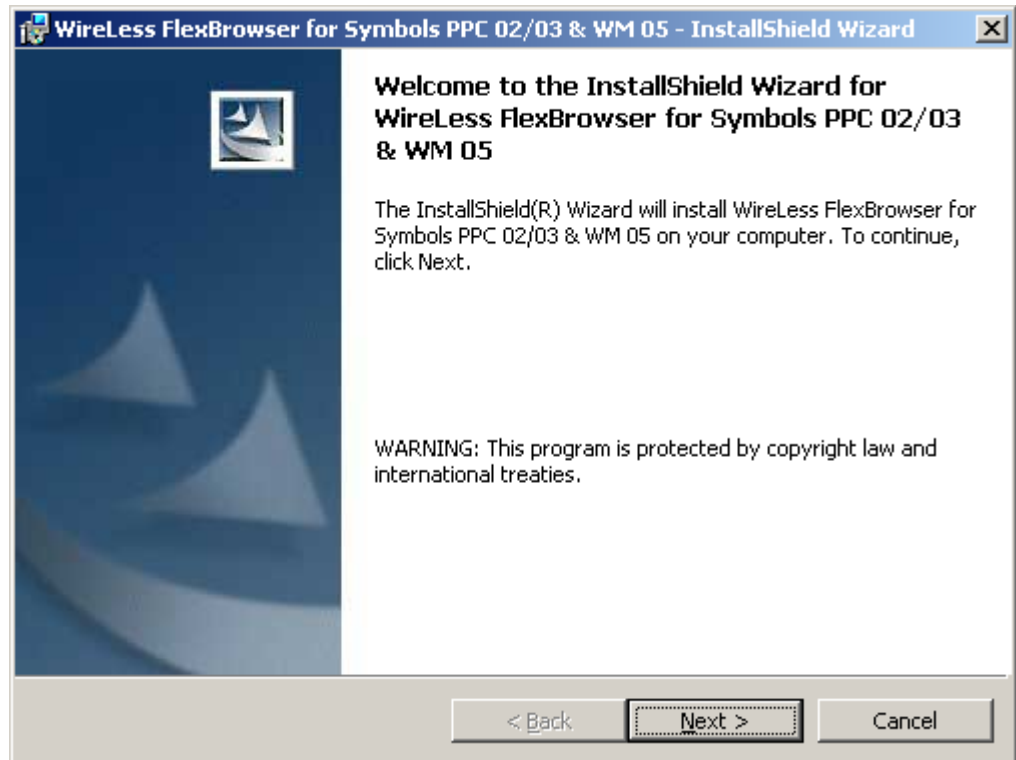


The main installation of the iPDA

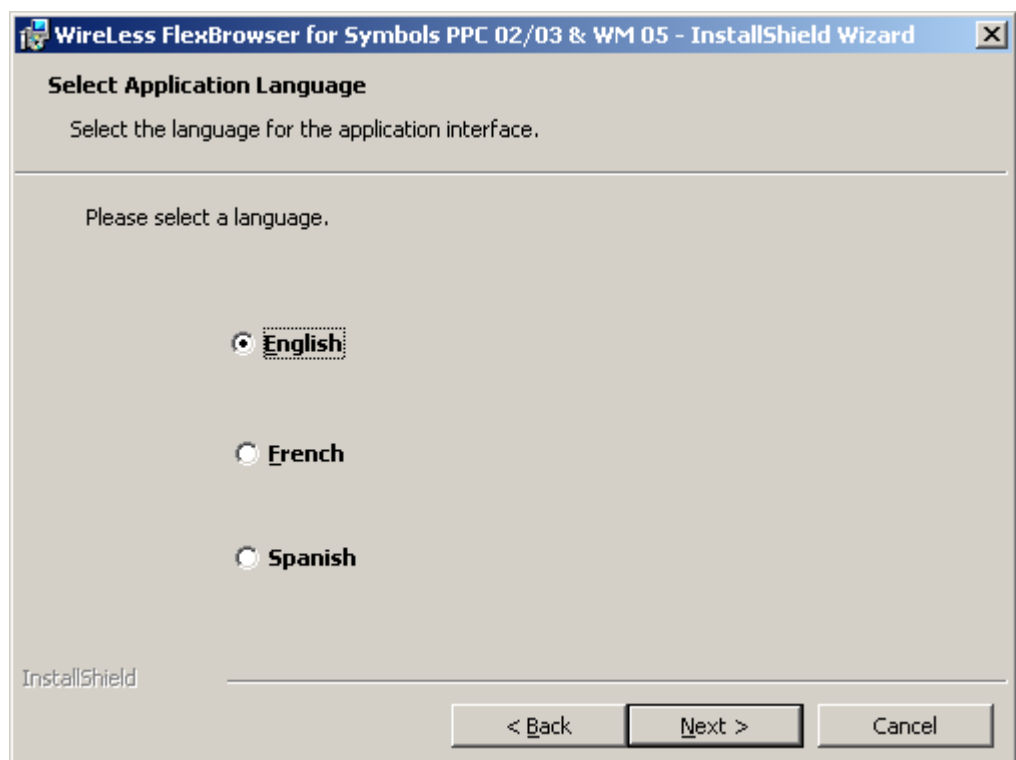


WireLess FlexBrowser Installation

Automatically it will continue with the installation of the WireLess FlexBrowser:



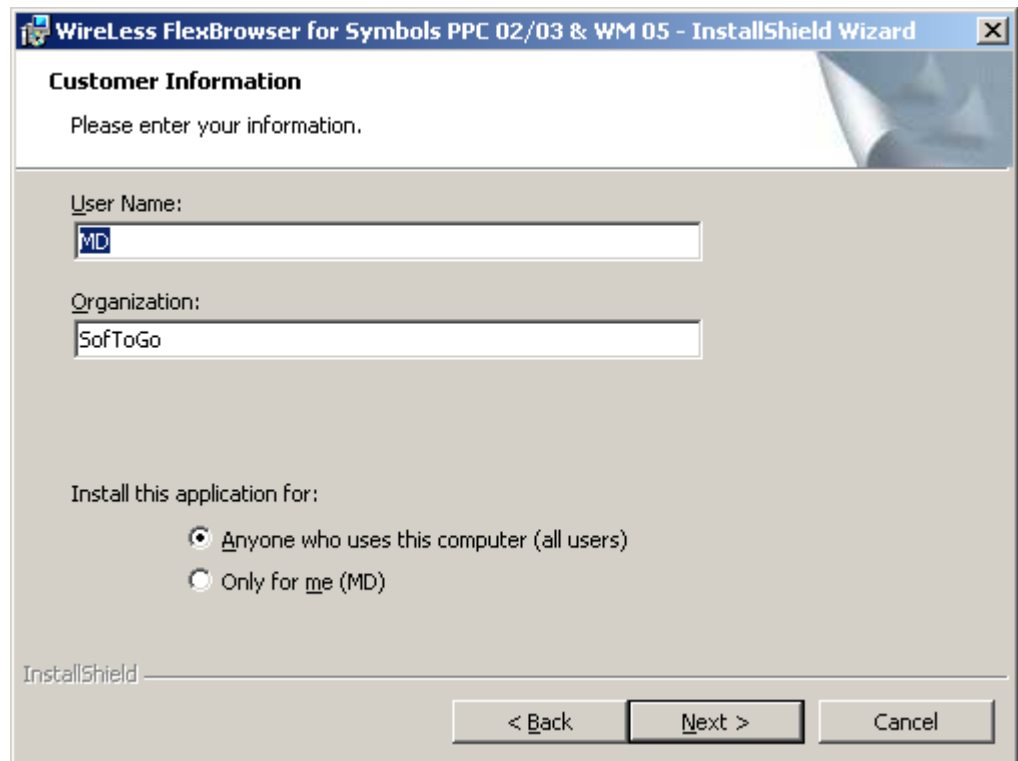
You will be presented with the option to select the language in which the application will be installed



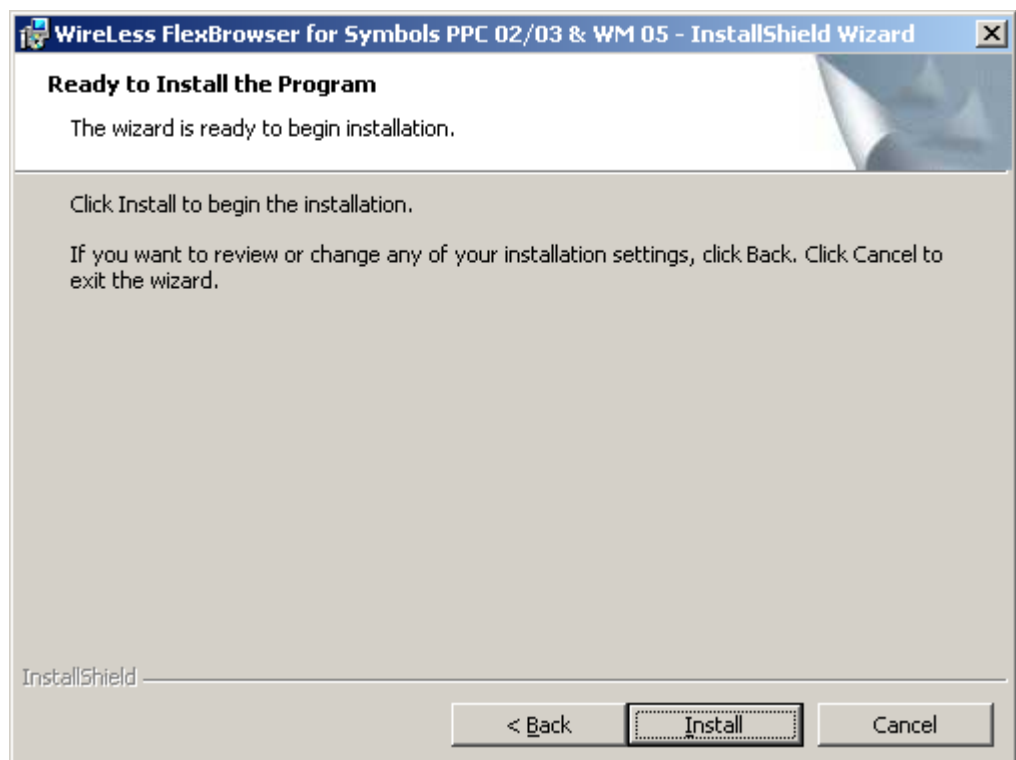
Should enter its data, name of user and/or name of the company. It will be able to select between two options:

1- The application can be used for all the users.

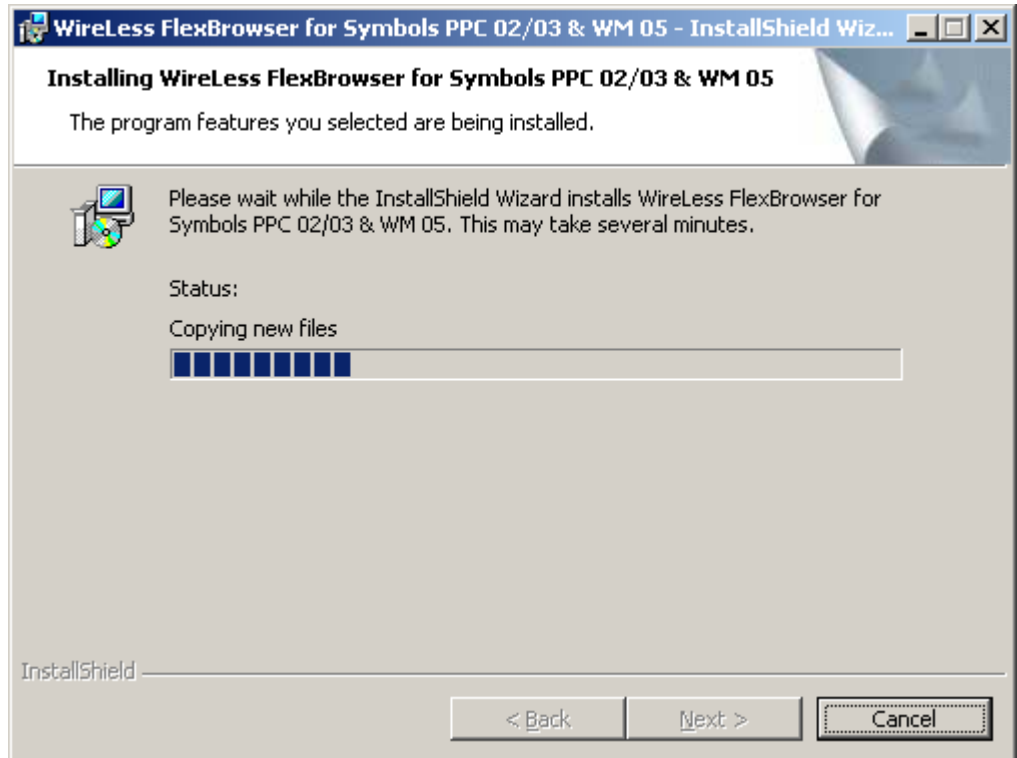
2- The application only will be able to be start by the user configured here.



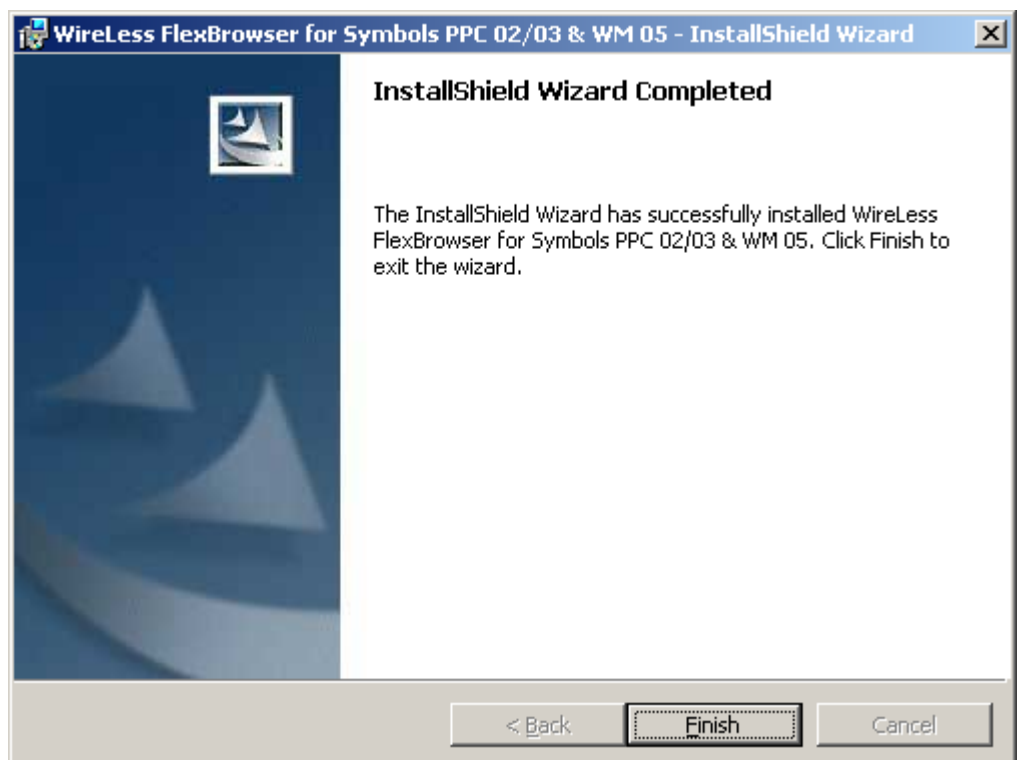
Confirm to begin the installation:



The application begin the installation:



The application has been satisfactorily installed and it's ready to be launched:



WireLess FlexBrowser Configuration

At the end of the PC installation we will continue describing the configuration needed to install WireLess FlexBrowser on the PDA. This procedure can be launched from the button:

Start/Programs/WireLess FlexBrowser

When we execute the Browser we can observe that a screen in **HTML** will permit us to configure the options of this same for an optimal performance of the application.

1) *Choose the device*

Choose the Operating System according to the version of your model, the options permitted are:

- Pocket PC 2002/2003
- Windows Mobile 2005
- Windows CE 4.20
- Windows CE 5.0

(The configuration form gone block the not available terminals according to the type of chosen operating System)

It is asked us to enter the selection of the type of device in which we are going to install it:

(Only remained available the compatible devices with the chosen operating system)

- Symbol series MC3000
- Symbol others devices (except MC 3000)
- Intermec I700
- Intermec CN2
- PSC Falcon

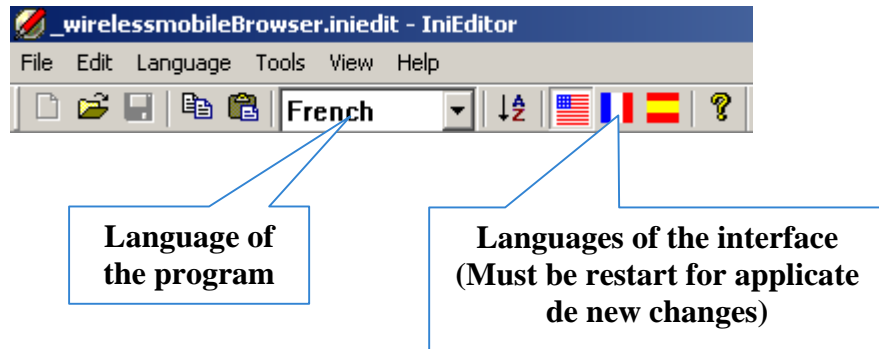
2) *Customize Configuration*

In the second step will be able to configure the PDA thanks at the IniEditor, which will permit to update the configuration, activating or deactivating options of the menu. These changes can be realized in the two ways, Administrator and User for a better performance of the application, according to the requirements.

Personnaliser WireLess FlexBrowser

A complete manual is found available in our website in the titled manual "wfb_configuration", in this one they can observe each one of the functions explained

The IniEditor will permit him to change the language of the interface by means of a picture of options which has a deployable to change the language of the open program, showing the descriptions and help's in the choosing language



3) Wlan Configuration

In the third step will be able to configure the network Wifi choosing if is desired an Static IP or an Dynamic IP

4) Automatic Launch and Uninstall

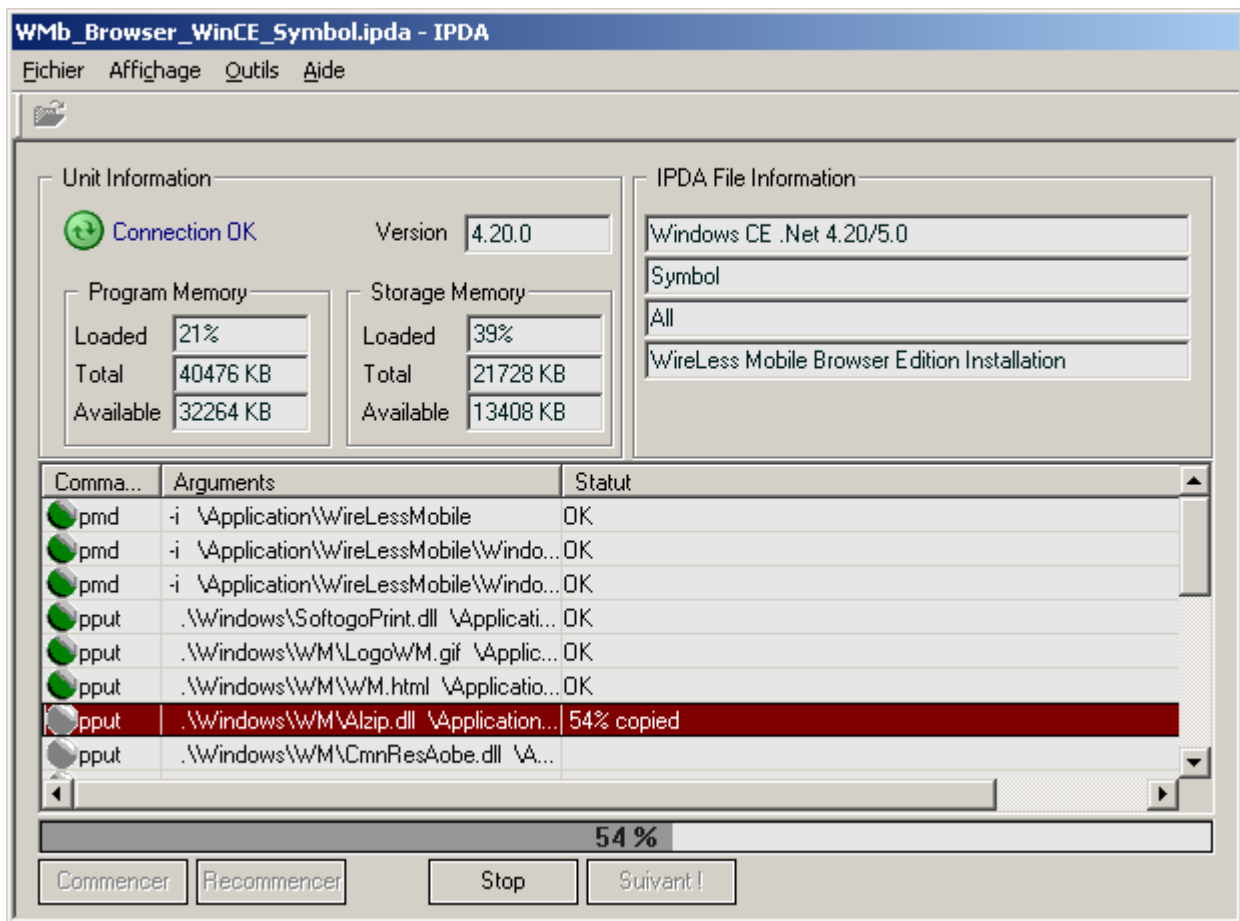
In the file HTML remain two options, the one that serves to launch the WireLess FlexBrowser since the starting of the Operating System. To be able to configure the terminal so that when be carried out a Coldboot or a Warmboot be not necessary to execute the application, but this was launched alone.

The second serves to eliminate Wireless FlexBrowser of the PDA. Should select its terminal in the upper part of the menu. In the terminals Pocket PC 2005 (Windows Mobile 5.0) WireLess FlexBrowser needs to be uninstalled manually first of the terminal. This it executed a Coldboot to finish.

5) Installation of WireLess FlexBrowser

Your terminal should be connected before you press in the button of installation, they was installed automatically later. If it not connected showed a message of "ERROR"

If your PDA is connect, the iPDA install the application directly like in the next example:



After de installation, the PDA will do a Coldboot.