

WireLess Deployer Networking Subnets

1	Description	1
2	Synoptic	2
3	WDp Console network site.....	3
3.1	Subnet.....	3
3.2	WDp Console Host	3
3.3	Router	3
4	WDp Clients network sites	3
4.1	Subnet.....	3
4.2	WDp Clients PDAs.....	3
4.3	Router	3
5	WireLess Deployer Functions	3
5.1	Available Functions.....	3
5.2	Unavailable Functions	3
5.3	Packet Deployment strategy.....	3
5.4	Statistics data	4
6	Configuration.....	4
6.1	WireLess Deployer Console configuration	4
6.2	WireLess Deployer PDA configuration	4

1 Description

Using WireLess Deployer in different sub-networks having routers.

WDp Console network site

One central site.

The WDp Console is placed into a local network with a router.

Hosts access other subnets through a Router.

Access from other subnets through a Router.

WDp Clients network sites

One or more peripheral sites.

The PDAs are placed into a local network with a router.

PDAs access other subnets through a Router.

Access from other subnets through a Router.

Links

Backbone network connecting routers.

Routers allowing multicast over subnets.

Questions

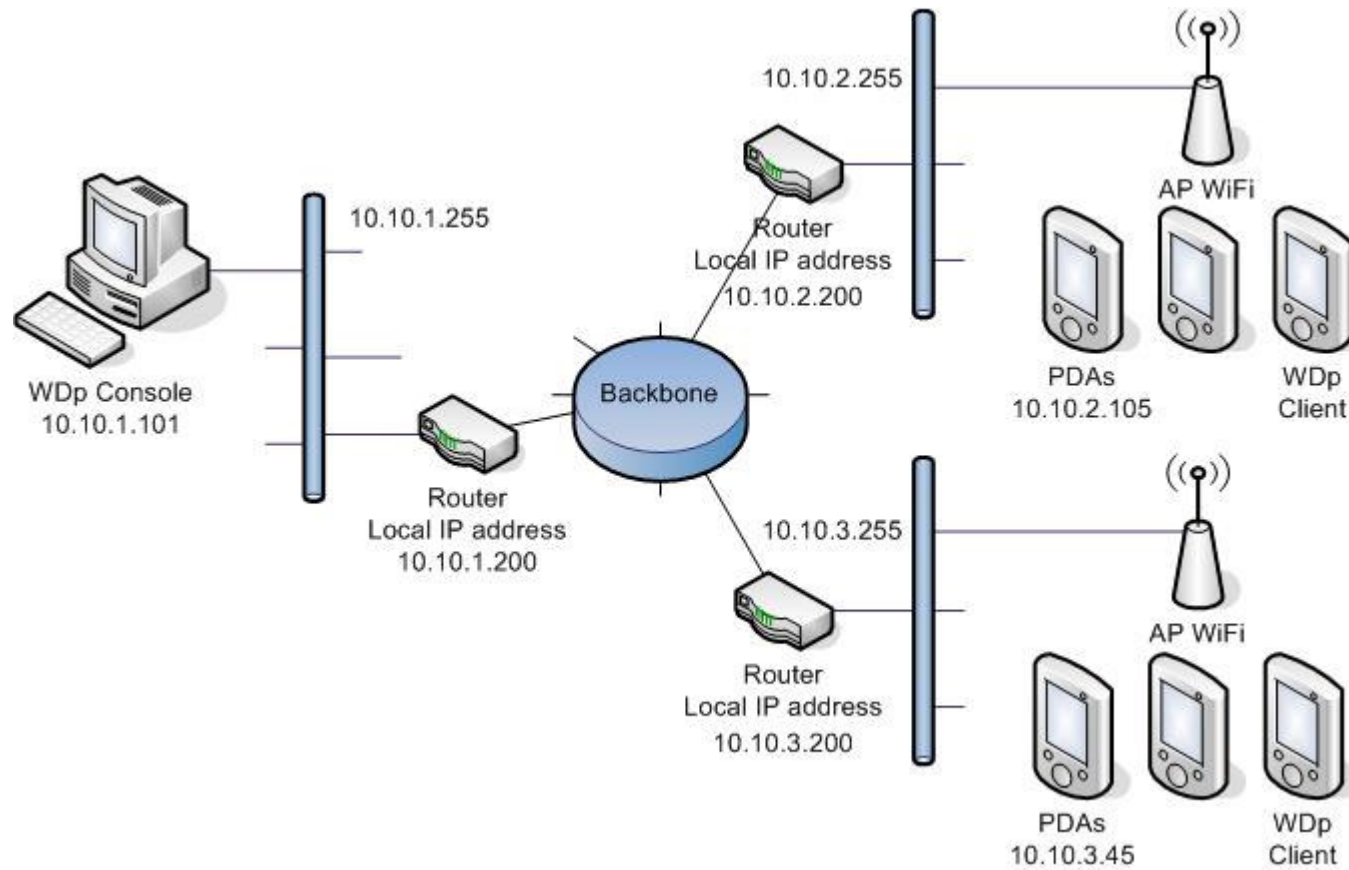
Console and PDAs are accessible through routing.

Broadcast packets from console are not forwarded.

Multicast packets from console are forwarded in each subnet.

Broadcast packets from PDAs are not forwarded.

2 Synoptic



3 WDP Console network site

3.1 Subnet

Local LAN with local IP addresses (i./e. 10.10.1.255).

3.2 WDP Console Host

Local LAN IP address (i./e. 10.10.1.101).

WDP console and WDP Agent installed.

Take care that Console configured sites match the real physical sites, to allow use of multicast packets.

3.3 Router

Local LAN IP address (i./e. 10.10.1.200).

Router will be configured to forward multicast packets to other subnets.

4 WDP Clients network sites

4.1 Subnet

Local LAN with local IP addresses (i./e. 10.10.2.255, 10.10.3.255).

4.2 WDP Clients PDAs

Local LAN IP address (i./e. 10.10.2.105, 10.10.3.45).

WDP Client installed.

4.3 Router

Local LAN IP address (i./e. 10.10.2.200, 10.10.3.200).

Router will be configured to forward multicast packets from other hosts to this subnet.

5 WireLess Deployer Functions

5.1 Available Functions

Packet deployment from PDA by users (Launcher – [Update]).

Packet deployment from PDA by schedule.

List reporting from PDA by schedule (State and statistics).

Packet deployment from Console by administrator (Update Units [This]).

Packet deployment from Console by administrator (Update Units [All] - site).

Packet deployment from Agent by schedule.

List reporting from Agent by periodic schedule (State and statistics).

Text messages from Console ([All] - site).

Execute actions from Console ([Execute Action]).

Remote Control from Console ([Remote Control]).

Remote Control request from PDA [RC]).

Reset Unit from Console ([Reset Unit]).

PDA Packet statistics.

PDA System statistics.

5.2 Unavailable Functions

To perform "All" functions it is required to select a site.

If a site is selected (forwarded) Multicast packets are sent.

If a site is not selected (not forwarded) broadcast packets are sent.

Packet deployment from Console by administrator (Update Units [All]).

Text messages from Console ([All]).

5.3 Packet Deployment strategy

- Packets will be deployed by PDA user requests with launcher.
- Packets will be deployed by PDA periodic requests
- Packets will be deployed by Console commands.

The strategy to deploy packets will be to schedule an update when PDAs are not used. If new packets are found it will be automatically installed into PDAs.

Console-initiated commands (AutoList / AutoUpdate / SleepingUnits) will be used.

5.4 Statistics data

Statistics will be collected by "List" commands.

If PDA statistics are needed, it will be suitable to get PDA states:

- Program periodic connections in the WDP Client or...
- Program periodic list requests by Console host.

6 Configuration

6.1 WireLess Deployer Console configuration

[Agent]

WizardEnable=0

Wizard host discovery is not available from PDAs (Broadcast).

AutoUpdate=Yes

PDA are accessible from Console.

AutoList=Yes

PDA are accessible from Console.

AutoListTime=30

Set to get statistics from PDAs.

SleepingUnitsPolling=Yes

PDA are accessible from Console. Allows to send unanswered commands.

SleepingUnitsPeriod=5

Retry period.

ListMissingTime=180

Set if AutoList=Yes. Useful to detect unused units.

SiteGuessMask=24

Useful to place units in sites from different networks. Check the mask length. Take care to match subnets masks

6.2 WireLess Deployer PDA configuration

[connection]

ServerIp = 10.10.1.101.

Units will not discover the Console host (Broadcast).

ServerPort = 8128

Mandatory.

WizardEnable = No

Auto discovery wizard is not available.

WizardPort = 8128

Irrelevant.

ConnType = Ethernet

By Ethernet.

GprsConnName=

Irrelevant.

GprsConnMode=DH

Irrelevant.

[autoUpdate]

DoPeriodic= yes

Useful to have state of PDAs or updates.

Period = 30

Set a period, consider battery consumption by wake-up.

PeriodicCommand = L

Recommended to do a List (or update) command.

DoSchedule = Yes

Useful to made updates at fixed times, when PDAs are not used.

ScheduleCommand = U

Recommended to do an Update.

[schedule]

Fill the schedule list.