

WireLess Deployer Networking Firewall networks

1	Description	1
2	Synoptic	2
3	WDp Console network site.....	3
3.1	Subnet.....	3
3.2	WDp Console Host	3
3.3	NAT Router	3
4	WDp Clients network sites	3
4.1	Subnet.....	3
4.2	WDp Clients PDAs.....	3
4.3	NAT Router	3
5	WireLess Deployer Functions	3
5.1	Available Functions.....	3
5.2	Unavailable Functions	3
5.3	Packet Deployment strategy.....	4
5.4	Statistics data	4
6	Configuration.....	4
6.1	WireLess Deployer Console configuration	4
6.2	WireLess Deployer PDA configuration	4

1 Description

Using WireLess Deployer in different networks and sub-networks.

WDp Console network site

One central site.

The WDp Console is placed into a local network with firewall and router.

Hosts access the Internet through a NAT Router.

Access from Internet to a forwarded WDp port.

WDp Clients network sites

One or more peripheral sites.

The PDAs are placed into a local network with firewall and router.

PDAs access the Internet through a NAT Router.

No access from Internet to local PDAs.

Links

Public Network or dedicated links.

Questions

The WDp Console is accessible from Internet (through public address).

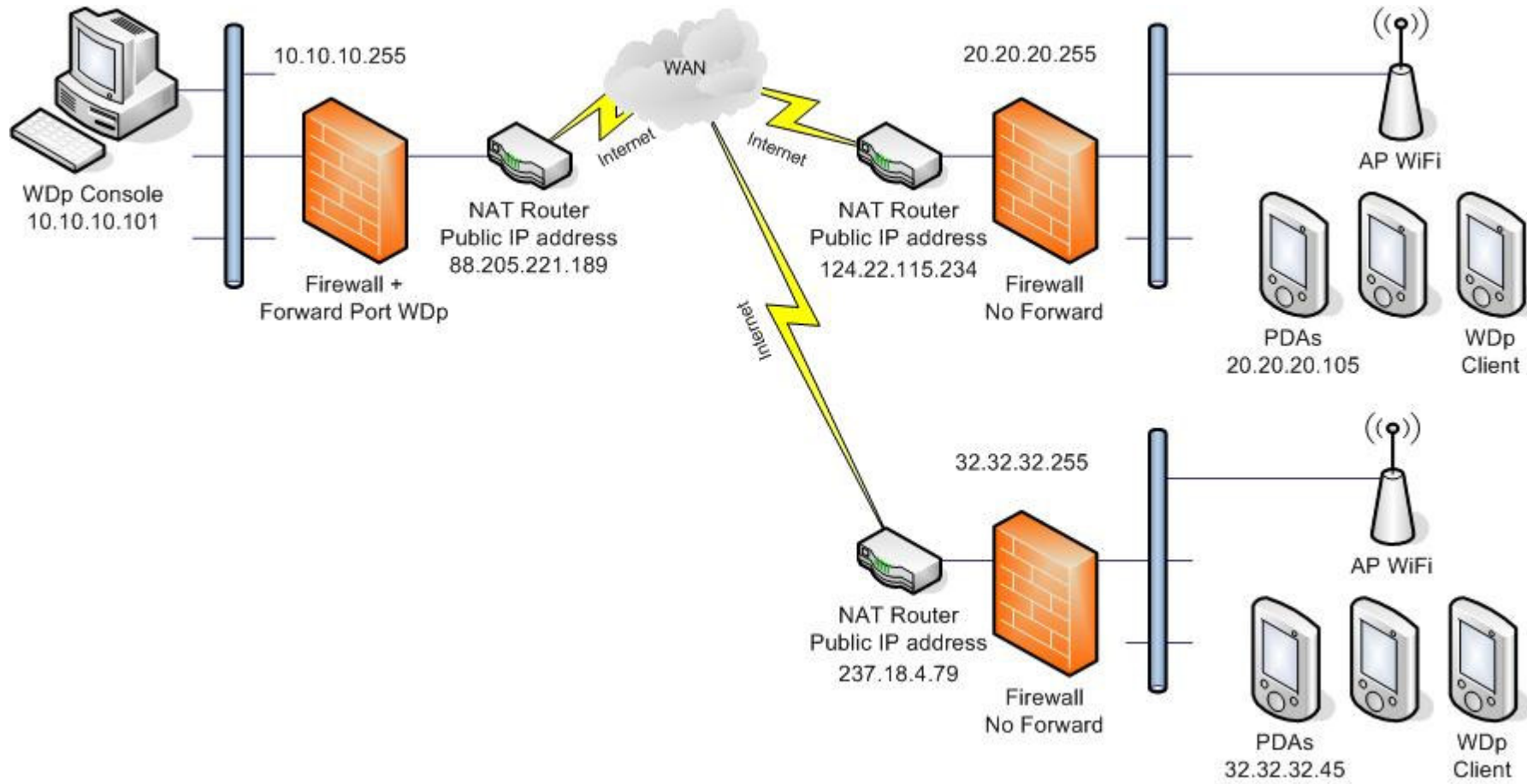
The PDAs are not accessible from Internet.

Broadcast packets from console are not forwarded.

Multicast packets from console are not forwarded.

Broadcast packets from PDAs are not forwarded.

2 Synoptic



3 WDP Console network site

3.1 Subnet

Local LAN with local IP addresses (i./e. 10.10.10.255).
Public WAN IP assigned by ISP (i./e. 88.205.221.189).

3.2 WDP Console Host

Local LAN IP address (i./e. 10.10.10.101).
WDP console and WDP Agent installed.

3.3 NAT Router

Local LAN IP address (i./e. 10.10.10.200).
Public WAN IP address (i./e. 88.205.221.189).
Port forwarding WDP (8128) to WDP Console host (10.10.10.101).

4 WDP Clients network sites

4.1 Subnet

Local LAN with local IP addresses (i./e. 20.20.20.255).
Public WAN IP assigned by ISP (i./e. 124.22.115.234).

4.2 WDP Clients PDAs

Local LAN IP address (i./e. 10.10.10.101).
WDP Client installed.

4.3 NAT Router

Local LAN IP address (i./e. 20.20.20.200).
Public WAN IP address (i./e. 124.22.115.234).
No port forwarding.

5 WireLess Deployer Functions

Functions

Packet deployment from PDA by users (Launcher – [Update]).
Packet deployment from PDA by schedule.
List reporting from PDA by schedule (State and statistics).
Packet deployment from Console by administrator (Update Units [All]).
Packet deployment from Console by administrator (Update Units [This]).
Packet deployment from Agent by schedule.
List reporting from Agent by periodic schedule (State and statistics).
Text messages from Console ([All] [Unit]).
Execute actions from Console ([Execute Action]).
Remote Control from Console ([Remote Control]).
Remote Control request from PDA [RC]).
Reset Unit from Console ([Reset Unit]).
PDA Packet statistics.
PDA System statistics.

5.1 Available Functions

Packet deployment from PDA by users (Launcher – [Update]).
Packet deployment from PDA by schedule.
List reporting from PDA by schedule (State and statistics).
PDA Packet statistics.
PDA System statistics.

5.2 Unavailable Functions

Packet deployment from Console by administrator (Update Units [All]).
Packet deployment from Console by administrator (Update Units [This]).
Packet deployment from Agent by schedule.
List reporting from Agent by periodic schedule (State and statistics).
Text messages from Console ([All] [Unit]).
Execute actions from Console ([Execute Action]).
Remote Control from Console ([Remote Control]).
Remote Control request from PDA [RC]) (Available but not useful).
Reset Unit from Console ([Reset Unit]).

5.3 Packet Deployment strategy

- Packets will be deployed by PDA user requests with launcher.
- Packets will be deployed by PDA periodic requests
- Packets will not be deployed by Console commands.

The strategy to deploy packets will be to schedule an update when PDAs are not used. If new packets are found it will be automatically installed into PDAs.

5.4 Statistics data

Statistics will be collected by “List” commands.
If PDA statistics are needed, it will be suitable to program periodic connections in the WDP Client to get PDA states.

6 Configuration

6.1 WireLess Deployer Console configuration

[Agent]

WizardEnable=0

Wizard host discovery is not available from PDAs.

AutoUpdate=No

PDA are not accessible from Console.

AutoList=No

PDA are not accessible from Console.

AutoListTime=

Irrelevant in this case.

SleepingUnitsPolling=No

PDA are not accessible from Console.

SleepingUnitsPeriod=0

Disable, units are not accessible from Console.

ListMissingTime=180

Irrelevant in this configuration.

SiteGuessMask=24

Useful to place units in sites from different networks. Check the mask length.

6.2 WireLess Deployer PDA configuration

[connection]

ServerIp = 88.205.221.189

Mandatory, units will not discover the Console host.

ServerPort = 8128

Mandatory.

WizardEnable = No

Auto discovery wizard is not available.

WizardPort = 8128

Irrelevant.

ConnType = Ethernet

By Ethernet.

GprsConnName=

Irrelevant.

GprsConnMode=DH

Irrelevant.

[autoUpdate]

DoPeriodic= yes

Useful to have state of PDAs or updates.

Period = 30

Set a period, consider battery consumption by wake-up.

PeriodicCommand = L

Recommended to do a List (or update) command.

DoSchedule = Yes

Useful to made updates at fixed times, when PDAs are not used.

ScheduleCommand = U

Recommended to do an Update.

[schedule]

Fill the schedule list.