

# Windows Security Center



**Windows Security Center** Security Center Help protect your PC

What's new in Windows to help protect my computer?

**Resources**

- Get the latest security and virus information from Microsoft
- Check for the latest updates from Windows Update
- Get support for security-related issues
- Get help about Security Center
- Change the way Security Center alerts me

**Firewall** ON

Windows Firewall is ON. Windows Firewall helps protect your computer against viruses and other security threats. [How does a firewall help protect my computer?](#)

Note: You now have a firewall that Windows can monitor. Click Recommendations to find out how.

Recommendations...

**Automatic Updates** ON

**Virus Protection** OUT OF DATE

ESET NOD32 antivirus system 2.70 reports that it might be out of date. Click Recommendations for suggested actions you can take. [How does antivirus software help protect my computer?](#)

Note: Windows does not detect all antivirus programs.

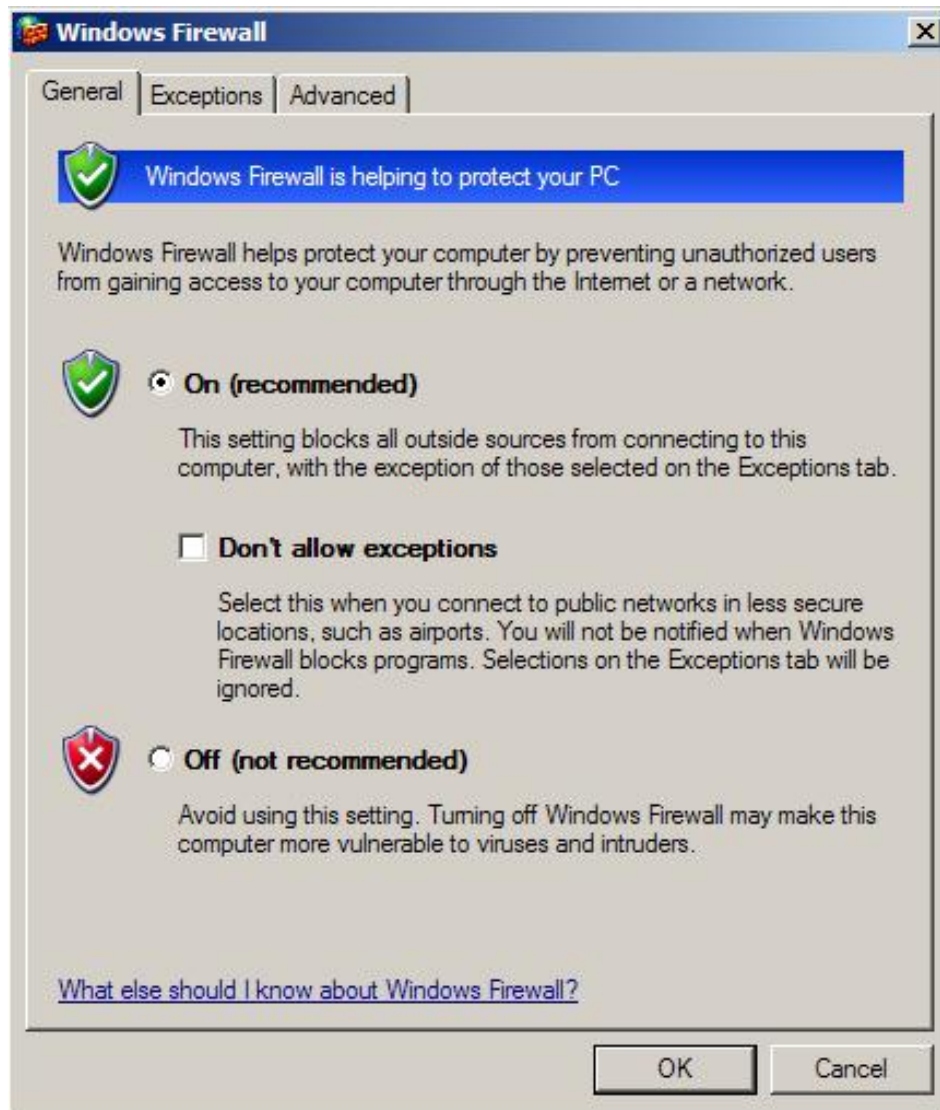
Recommendations...

Manage security settings for:

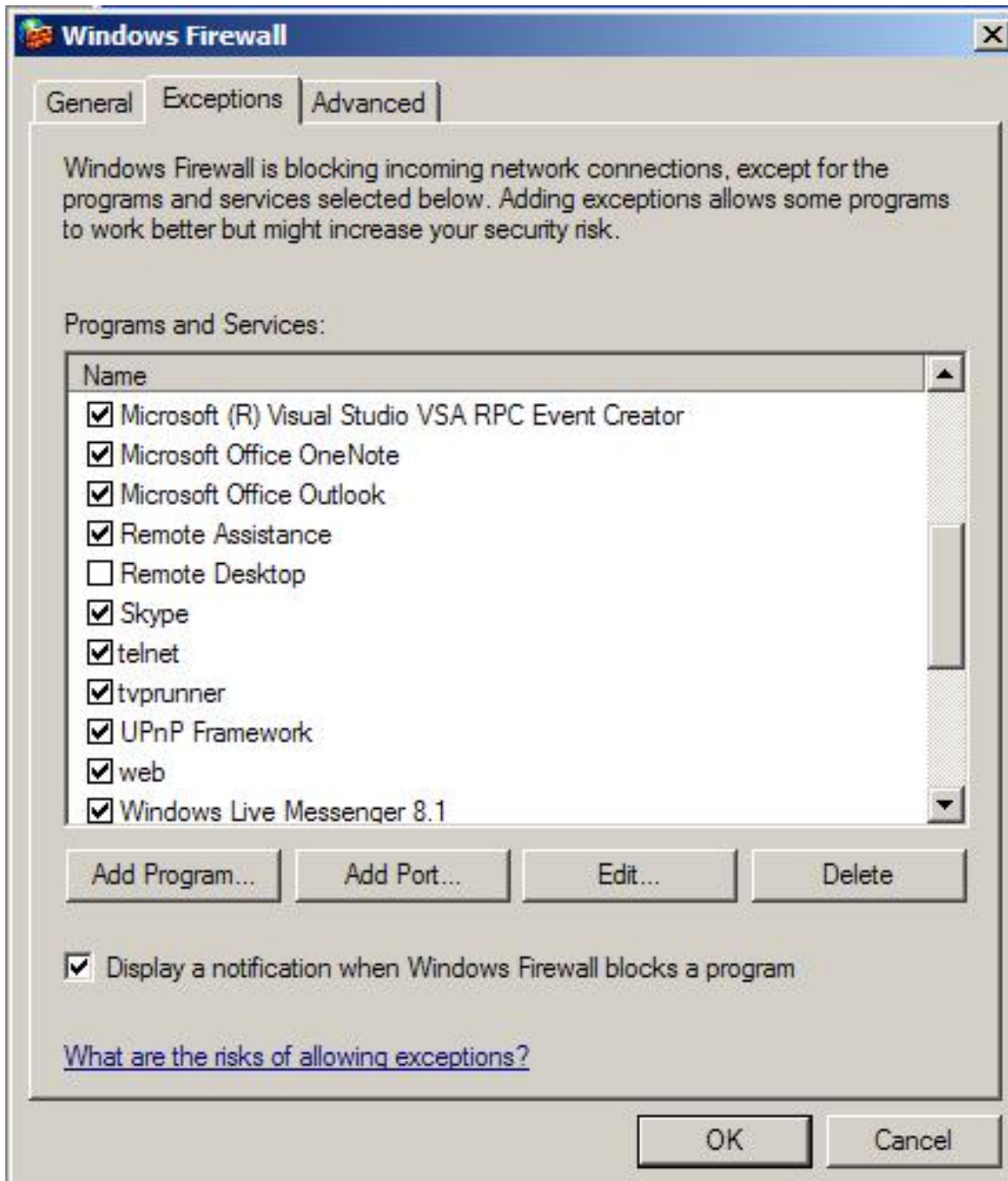
- Internet Options
- Windows Firewall
- Automatic Updates

At Microsoft, we care about your privacy. Please read our [privacy statement](#).

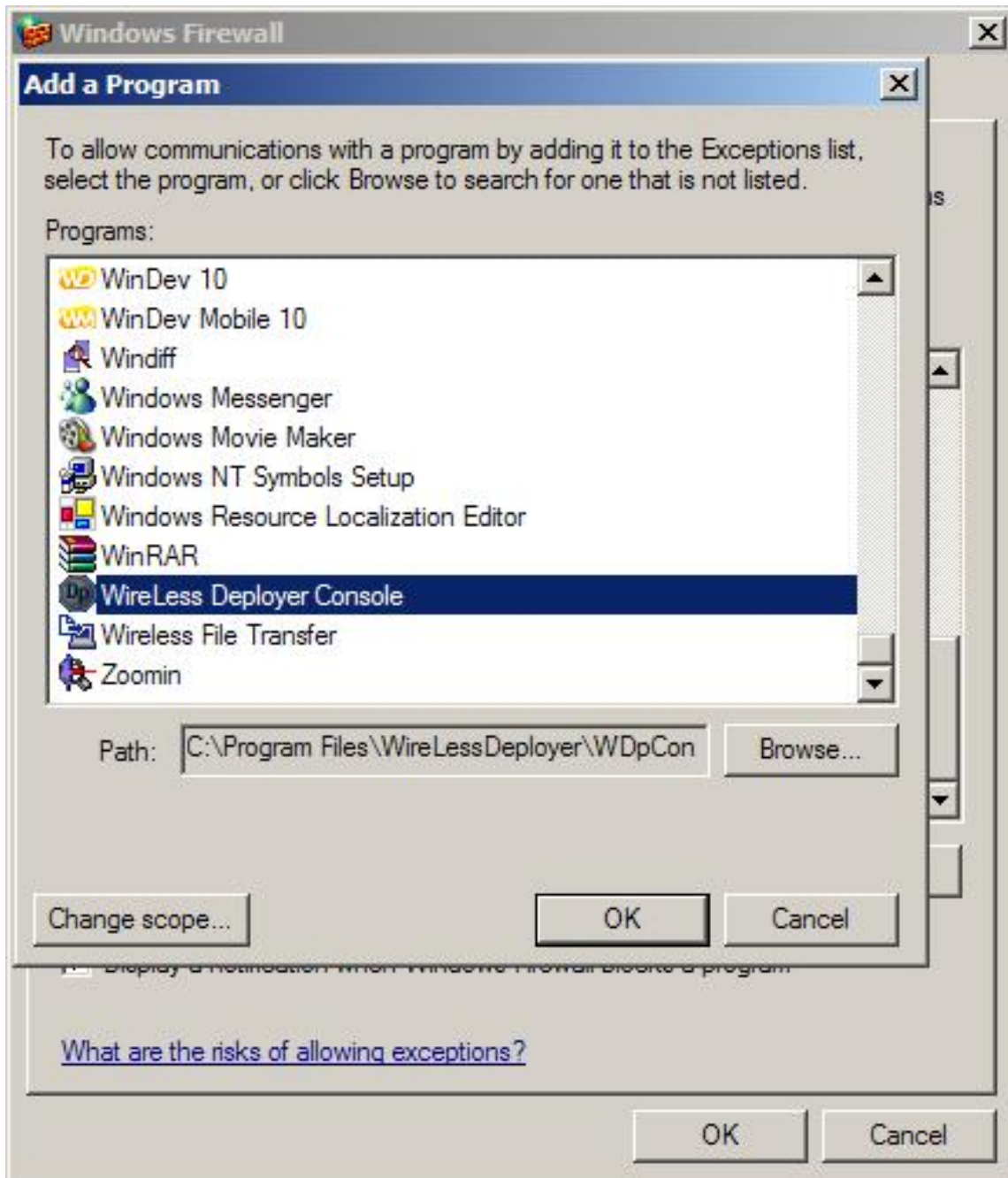
## Windows Firewall



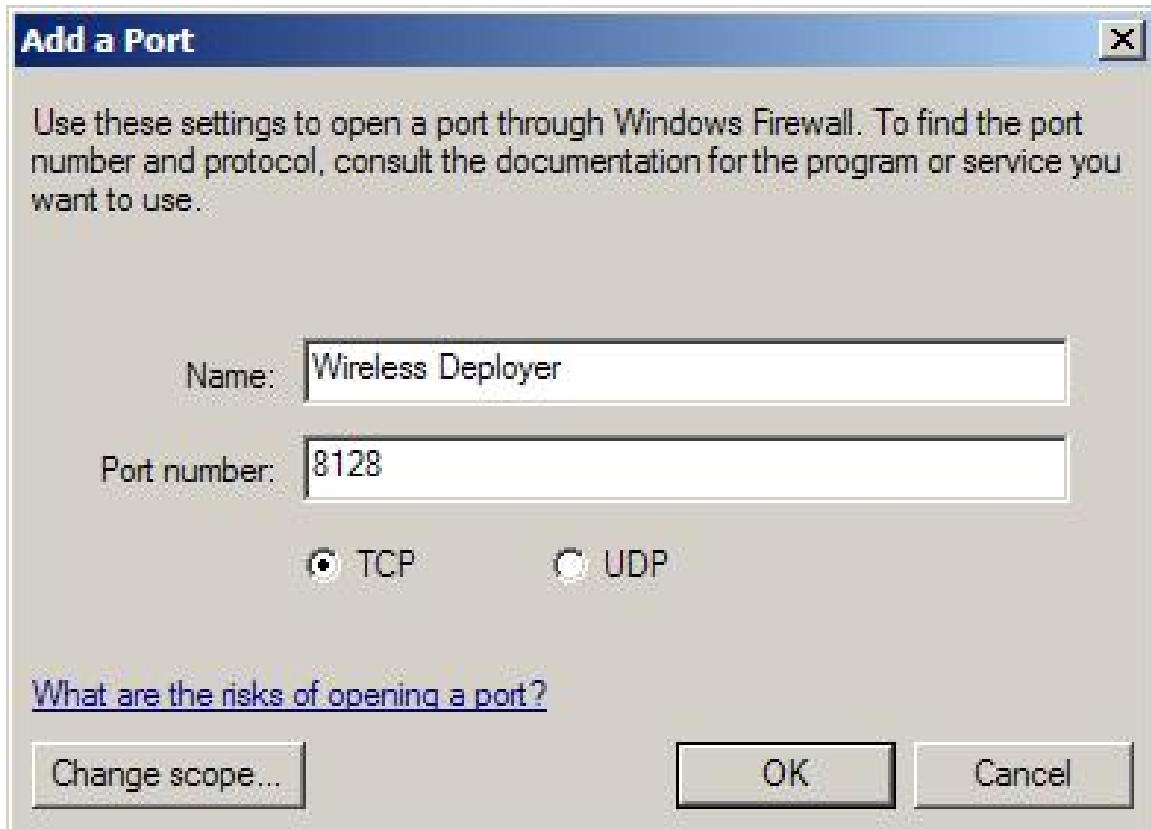
## Add program and port number



## Add WirelessDeployerAgent.exe and WdpConsole.exe



**Enable ports: 8128 (TCP and UDP) and 8129 (TCP and UDP)**



The image shows a Windows Firewall 'Add a Port' dialog box. The title bar is blue with the text 'Add a Port' and a close button. The main area has a light gray background with the following text: 'Use these settings to open a port through Windows Firewall. To find the port number and protocol, consult the documentation for the program or service you want to use.' Below this, there are two text input fields: 'Name:' with the value 'Wireless Deployer' and 'Port number:' with the value '8128'. Underneath the port number field are two radio buttons: 'TCP' (which is selected) and 'UDP'. At the bottom left, there is a blue underlined link that says 'What are the risks of opening a port?'. At the bottom right, there are three buttons: 'Change scope...', 'OK', and 'Cancel'.

**Add a Port**

Use these settings to open a port through Windows Firewall. To find the port number and protocol, consult the documentation for the program or service you want to use.

Name:

Port number:

TCP       UDP

[What are the risks of opening a port?](#)