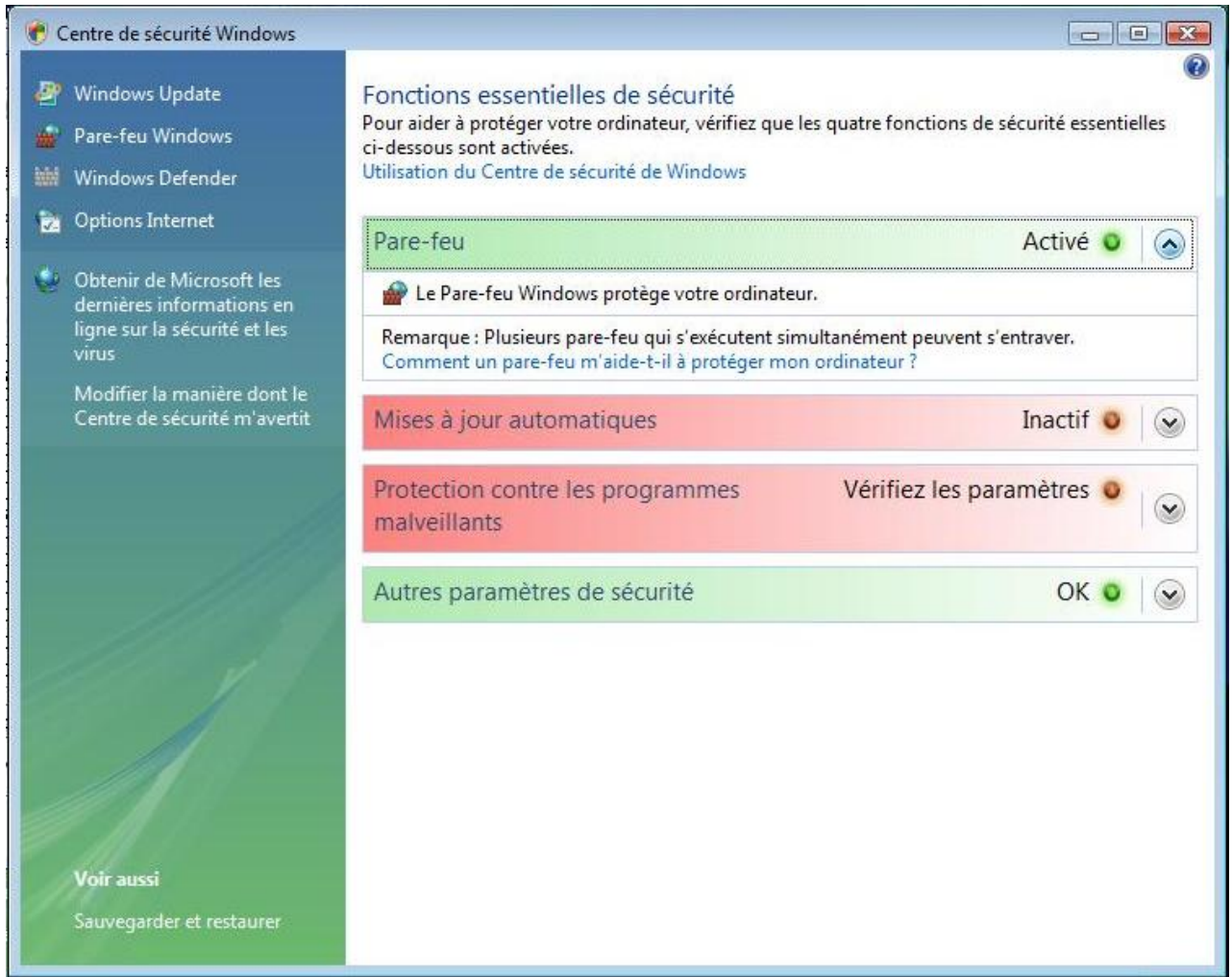
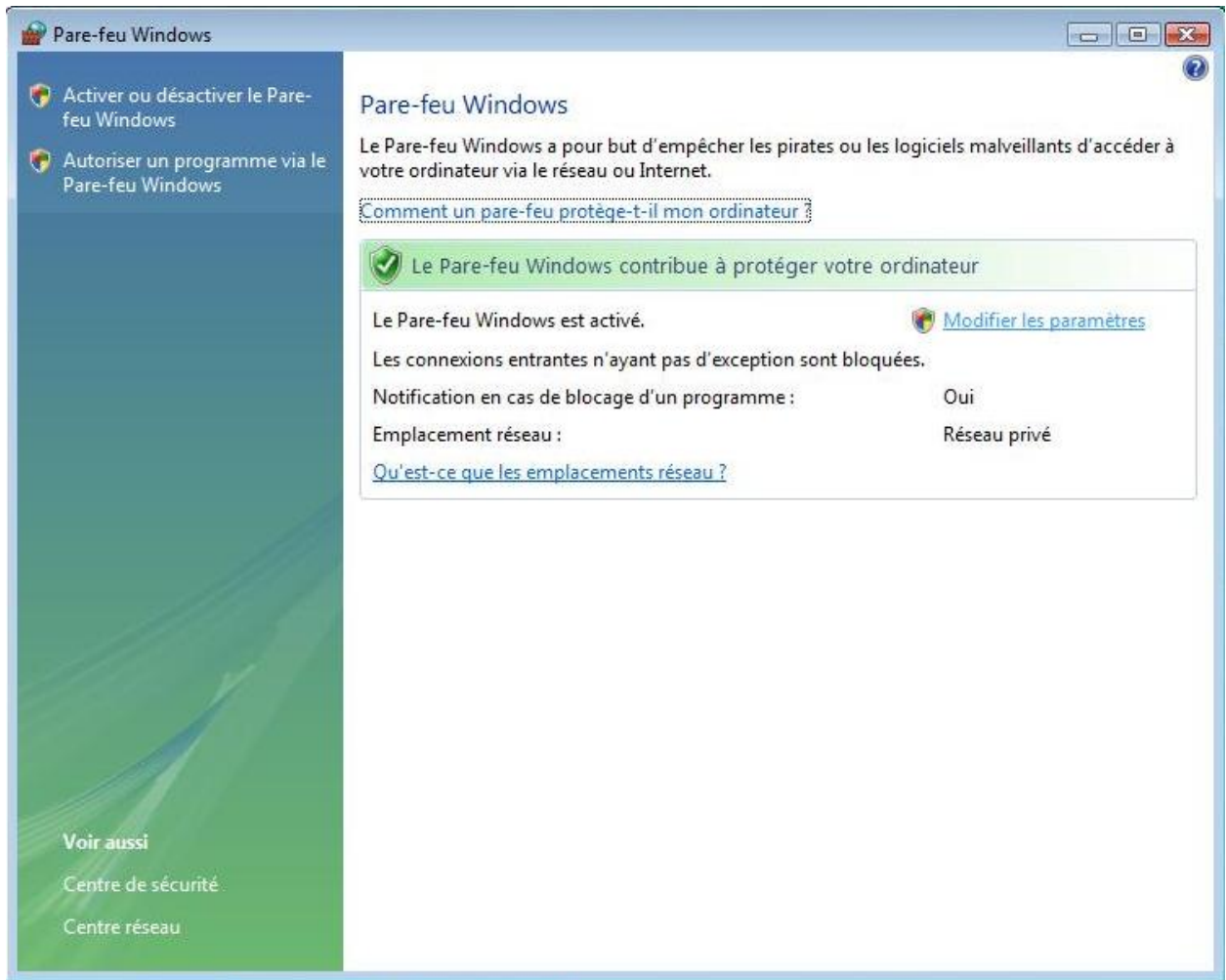


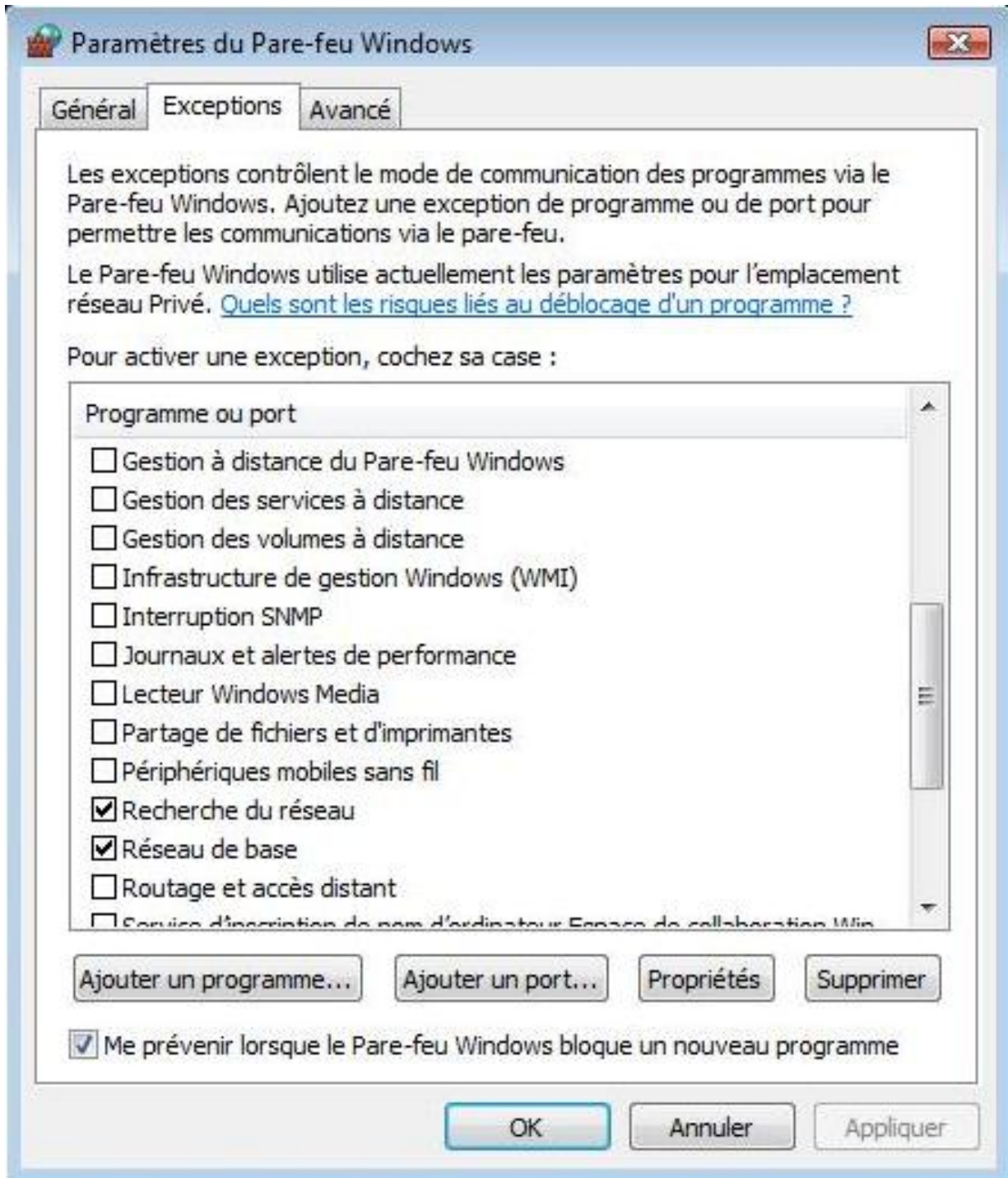
Centre de sécurité Windows



Pare-feu Windows



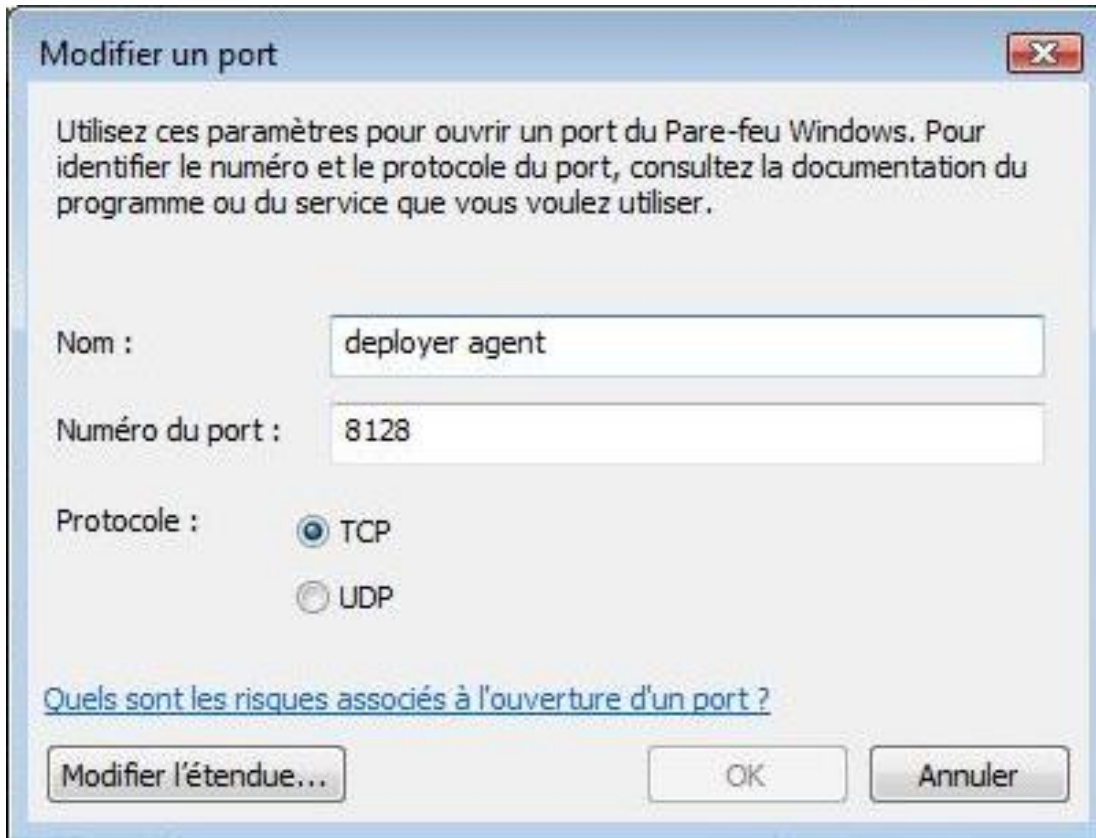
Ajouter programme et port



Ajouter WirelessDeployerAgent.exe et WdpConsole.exe



Activer les ports 8128 (TCP y UDP) et 8129 (TCP y UDP)



The image shows a Windows Firewall dialog box titled "Modifier un port". It contains the following fields and options:

- Nom :** deployer agent
- Numéro du port :** 8128
- Protocole :** TCP, UDP
- Quels sont les risques associés à l'ouverture d'un port ?** (with a link icon)
- Buttons:** Modifier l'étendue..., OK, Annuler