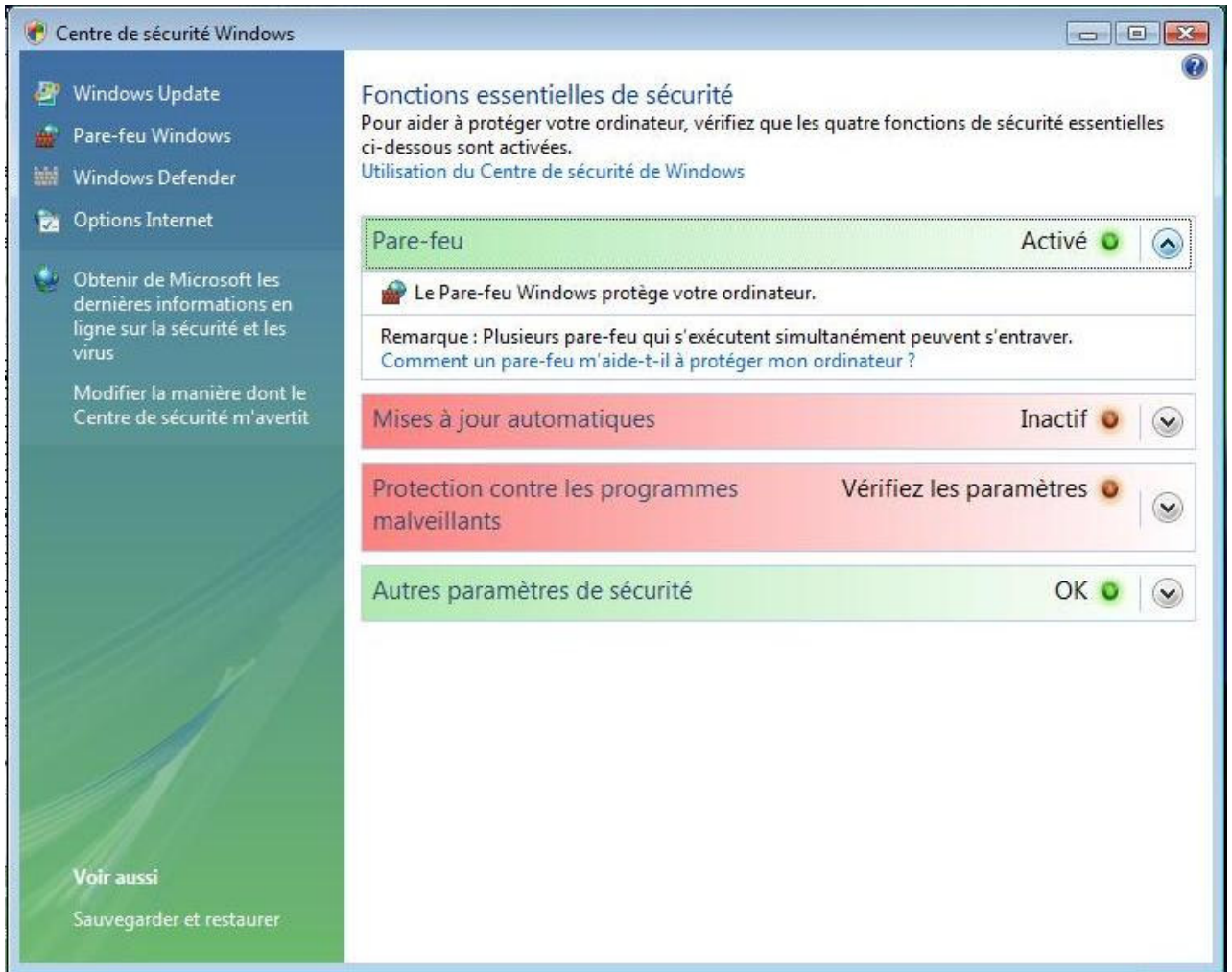
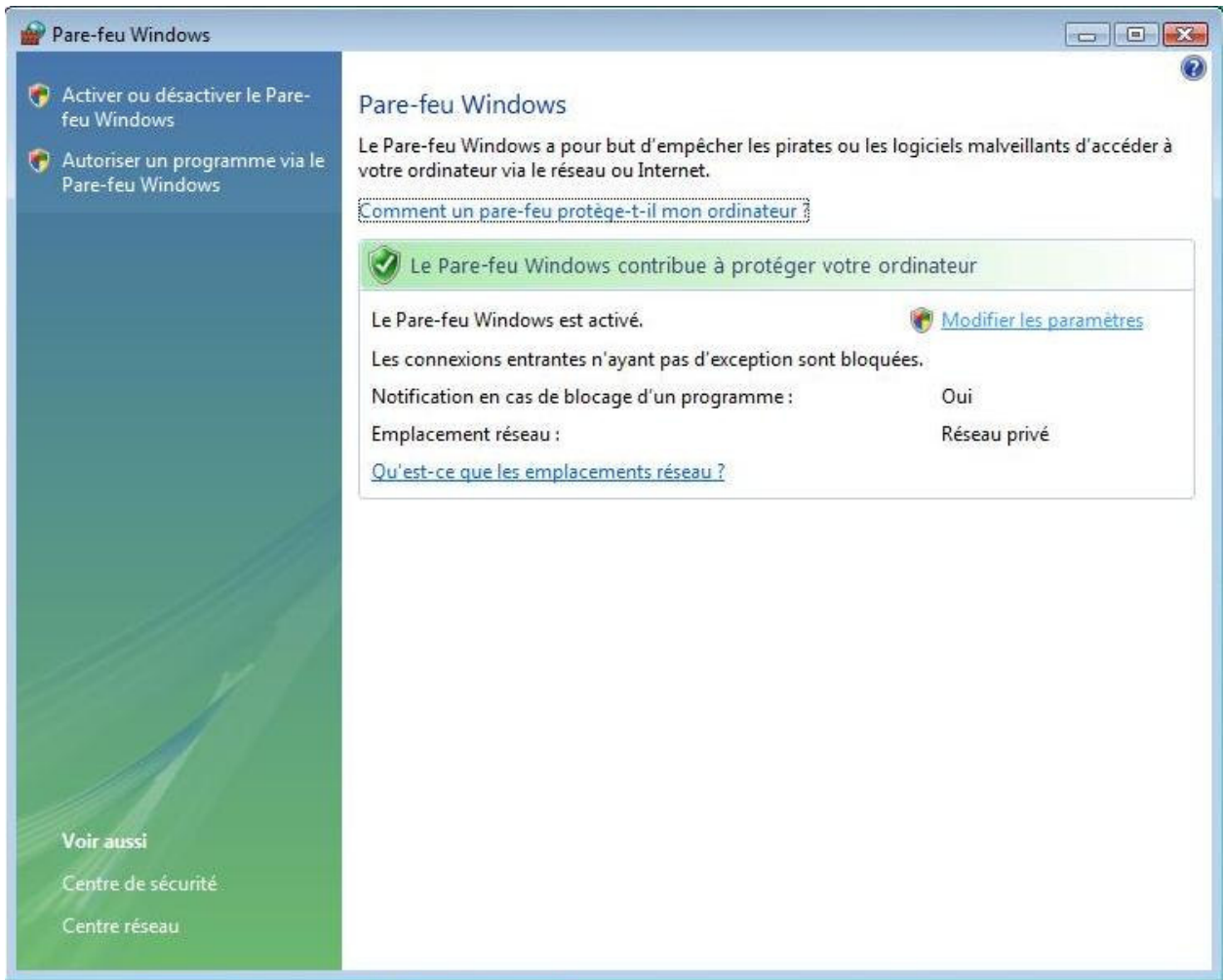


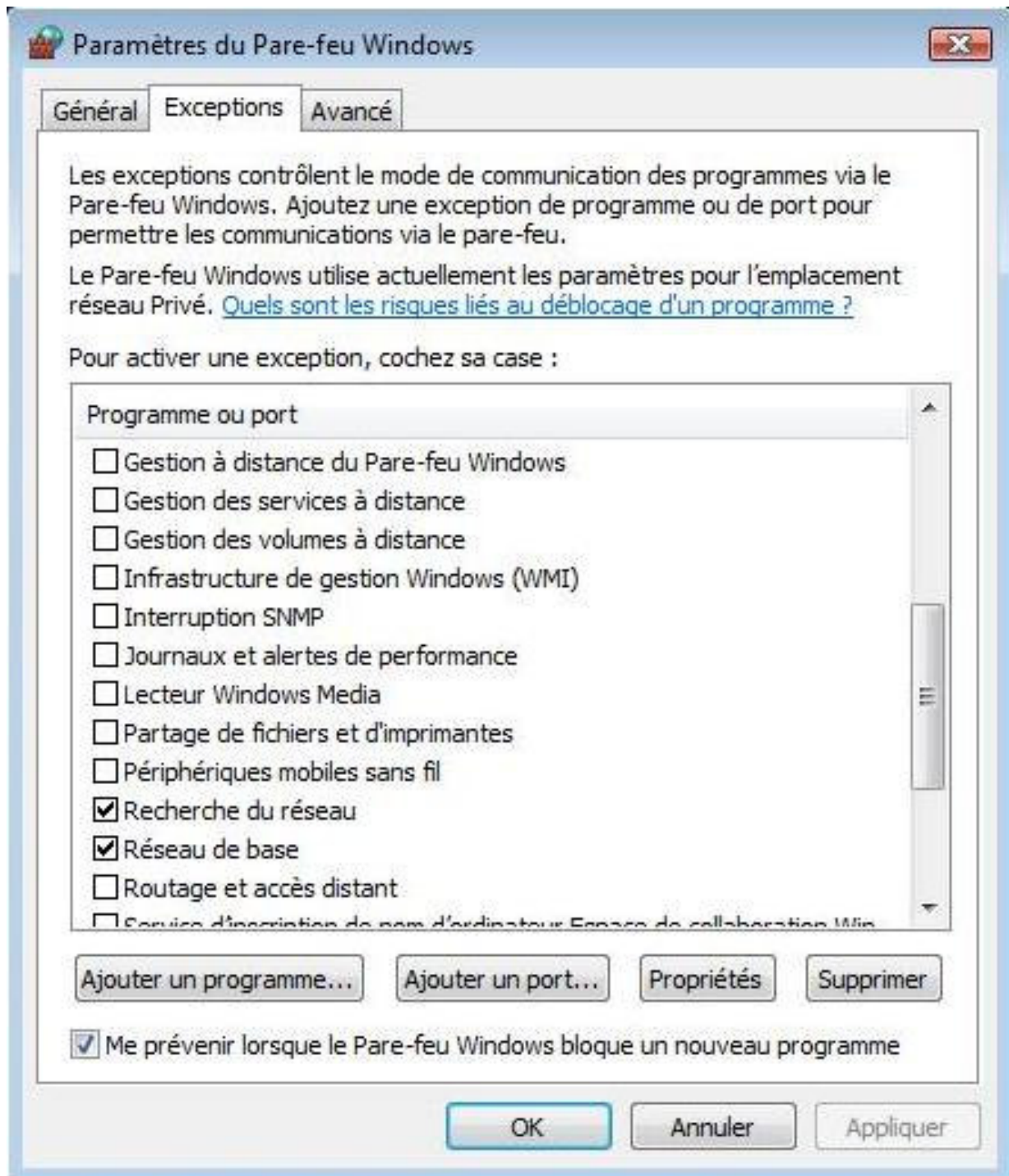
Centro de seguridad Windows



Firewall de Windows



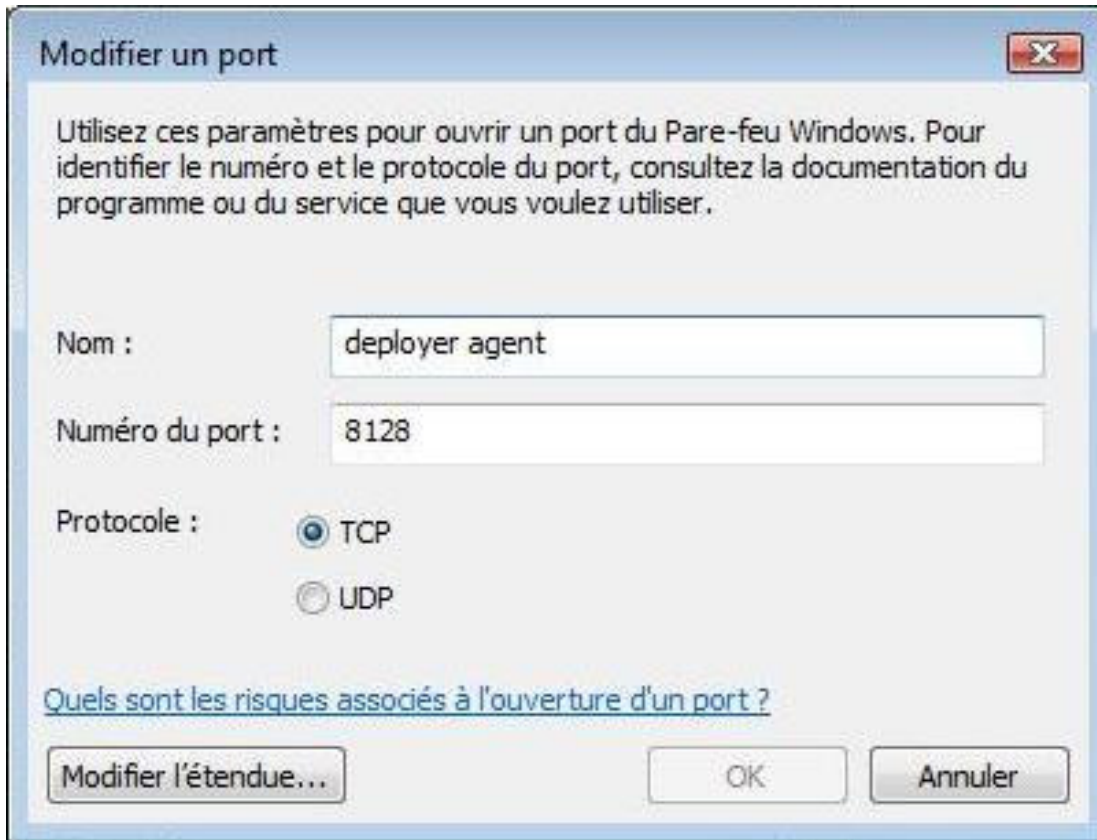
Agregar programa y puerto



Agregar WirelessDeployerAgent.exe y WdpConsole.exe



Habiliter los puertos 8128 (TCP y UDP) y 8129 (TCP y UDP)



The image shows a Windows Firewall dialog box titled "Modifier un port". It contains the following fields and options:

- Nom :** deployer agent
- Numéro du port :** 8128
- Protocole :** TCP, UDP
- Quels sont les risques associés à l'ouverture d'un port ?** (with a blue link)
- Buttons:** Modifier l'étendue..., OK, Annuler