

WLpd User Manual

WLpd is a LPD LPR client for PDAs.

Typically, an LPR/LPD agent listen over a Network port (TCP/IP port 515 as standard) for printing jobs and send data to an attached printer over a serial port.

WLpd agent is a client designed for WinCE devices.

It runs as background task, without user interface.

Configuration is done by WLpd.cfg file. This file is read at startup time.

The WLpd TRIAL version changes characters A to E and 0 to 5, so if there is printing errors is possible due to trial features...

WLpd configuration file:

```
[PRINTER] // Printer Params
ComPort=1 // 1=Com1
Baud=96 // 12 24 48 96 19 38
Parity=N // E O M S N
DataBits=8 // 7 8
StopBits=1 // 1 2
FlowControl=N // N S H
Dsr=Yes
Cts=No
Cd=Yes
Timeout=30
Delay=0

[IP] // Port selection
//Port = 515 // Default

[TRACE] // Trace file information
FileName = WLpd.log /* This is the log file name */
Level= 0

[END] // this section is for the end request file
//FileEnd = "WLpd.end"

[SPOOL]
SpoolDo=Yes
SpoolDir=WLpdSpool // W/O / or \
```

For troubleshooting, you can configure a log file to follow the LPD operations.

```
TRACE]
FileName= WLpd.log
Level= 99
```

You will find a WLpd.log text file in the root folder of the PDA.

WLpd Installation

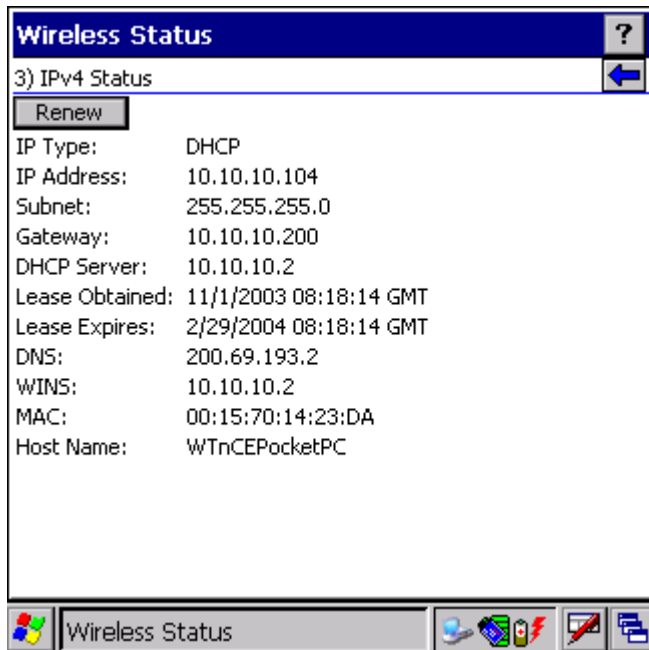
For Motorola / Symbol Technologies devices

Copy **WLpd.exe** file to \Application folder

Copy **WLpd.cfg** file to \Application folder

Copy **WLpd.cpy** file to \Application folder

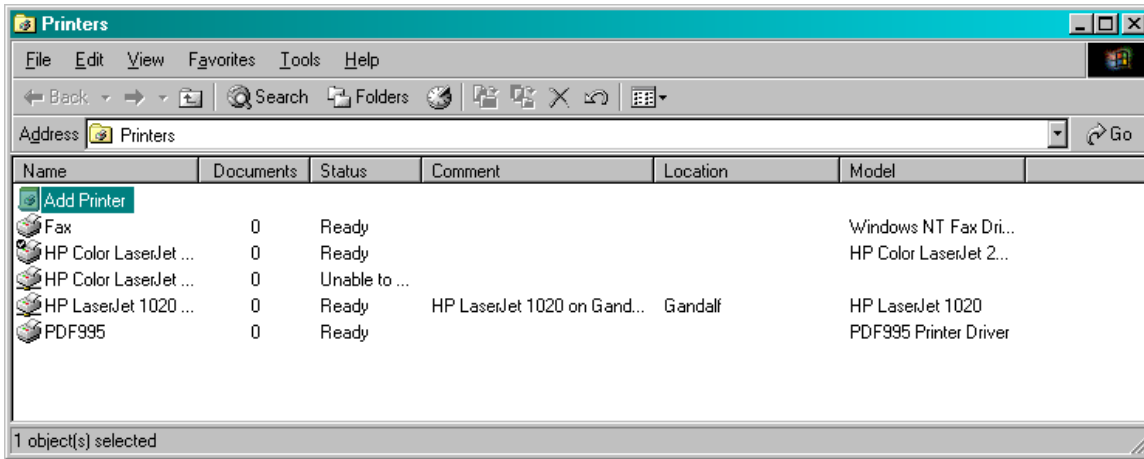
LPD protocol needs a fixed IP address or a device name to send



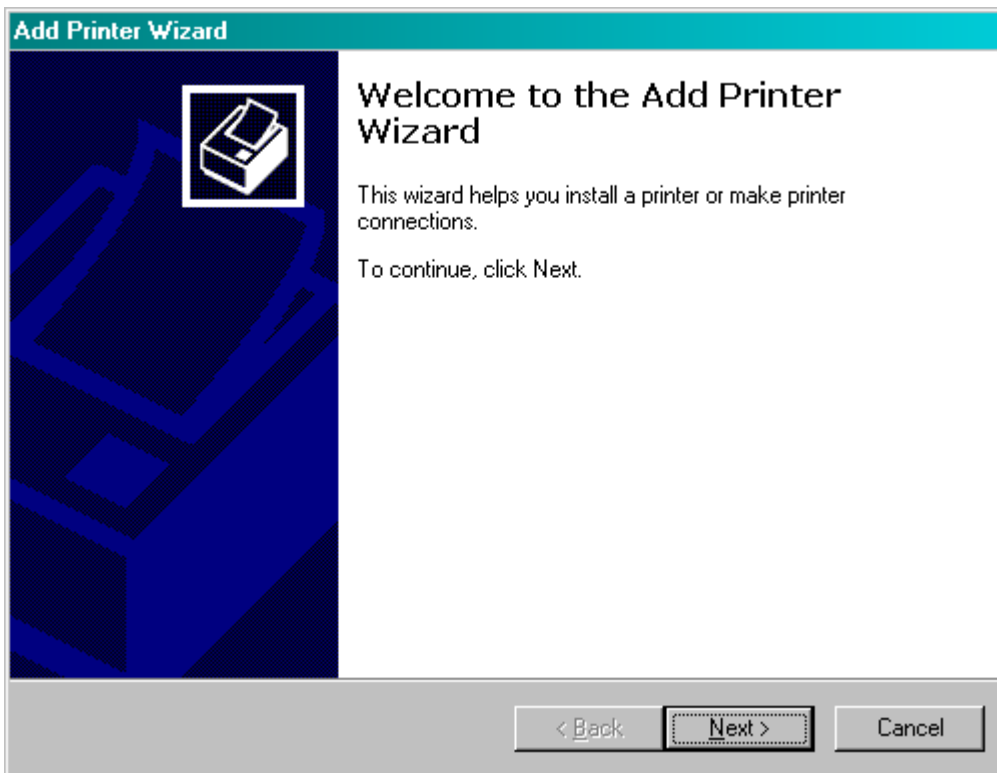
Here a device with IP addresses 10.10.10.104.

Adding an LPR/LPD printer on Windows (Win2000)

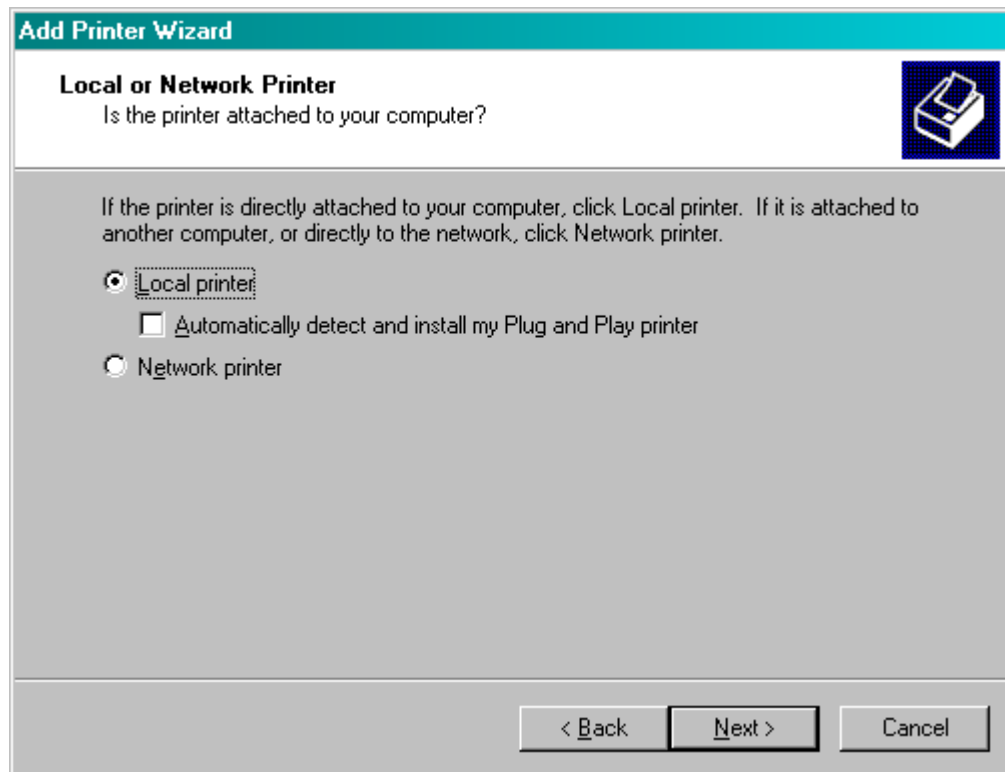
Go to Setting / Printers.



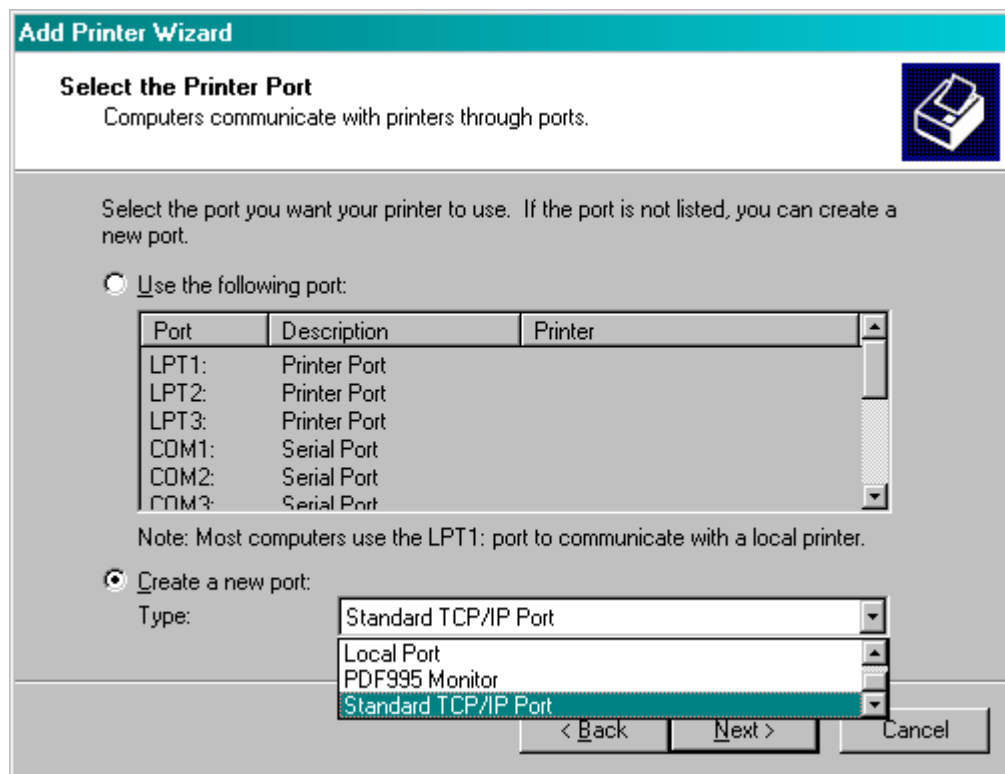
Click on Add Printer



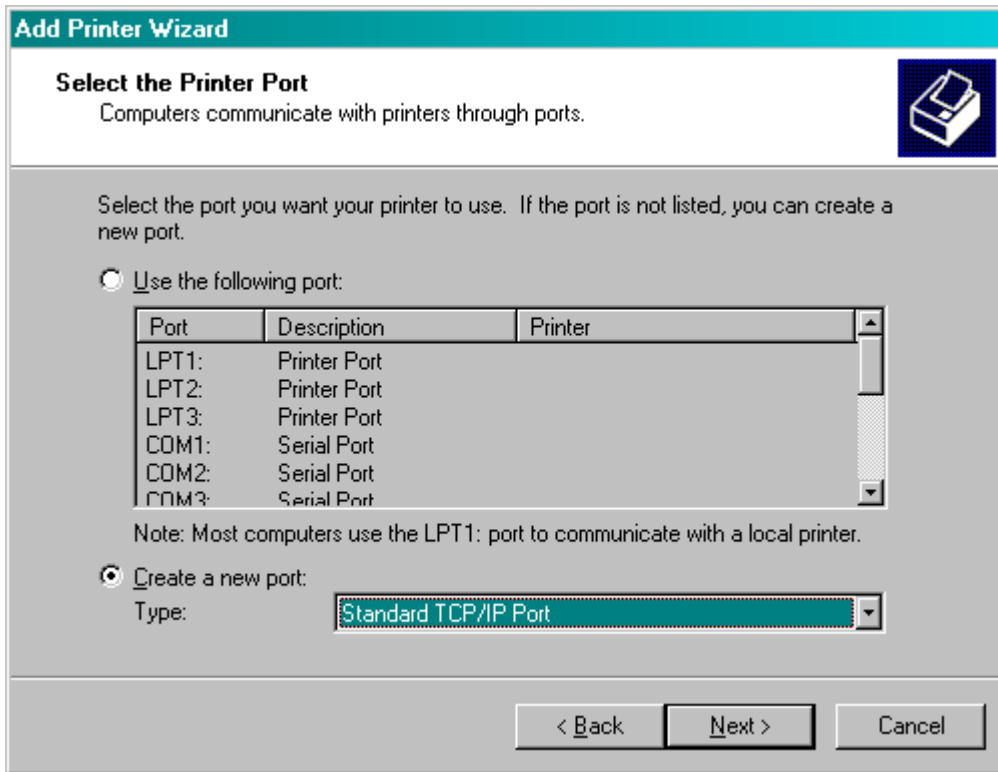
Click on Next



Select Local Printer



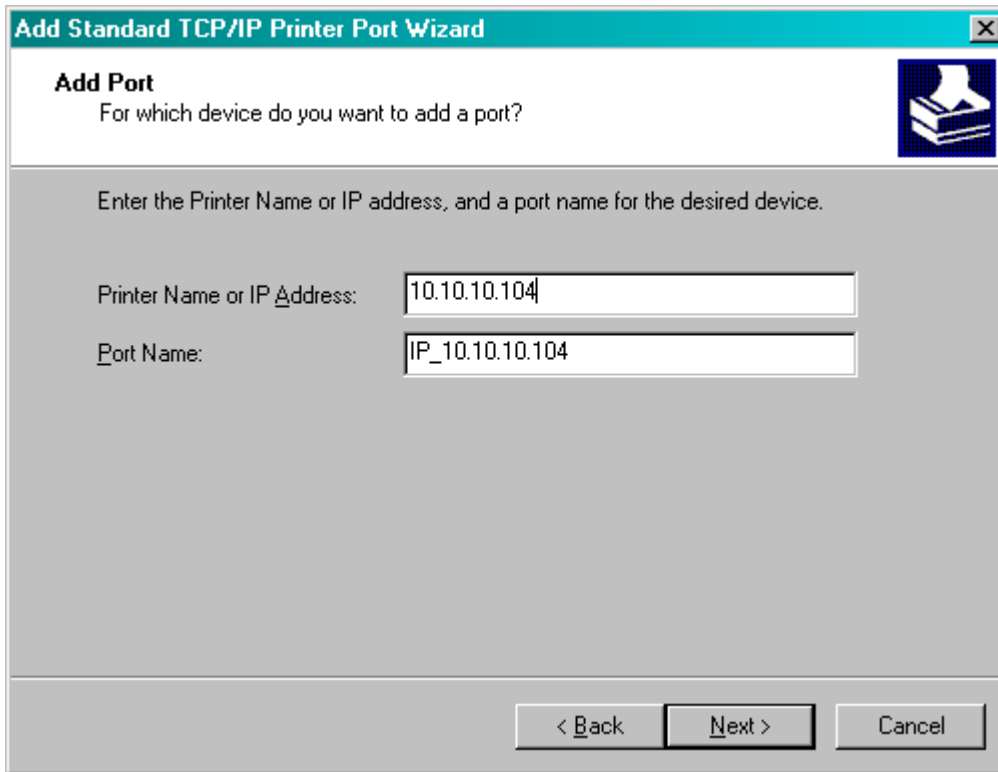
Cerate an Standard CTP/IP Port (LPD/LPR)



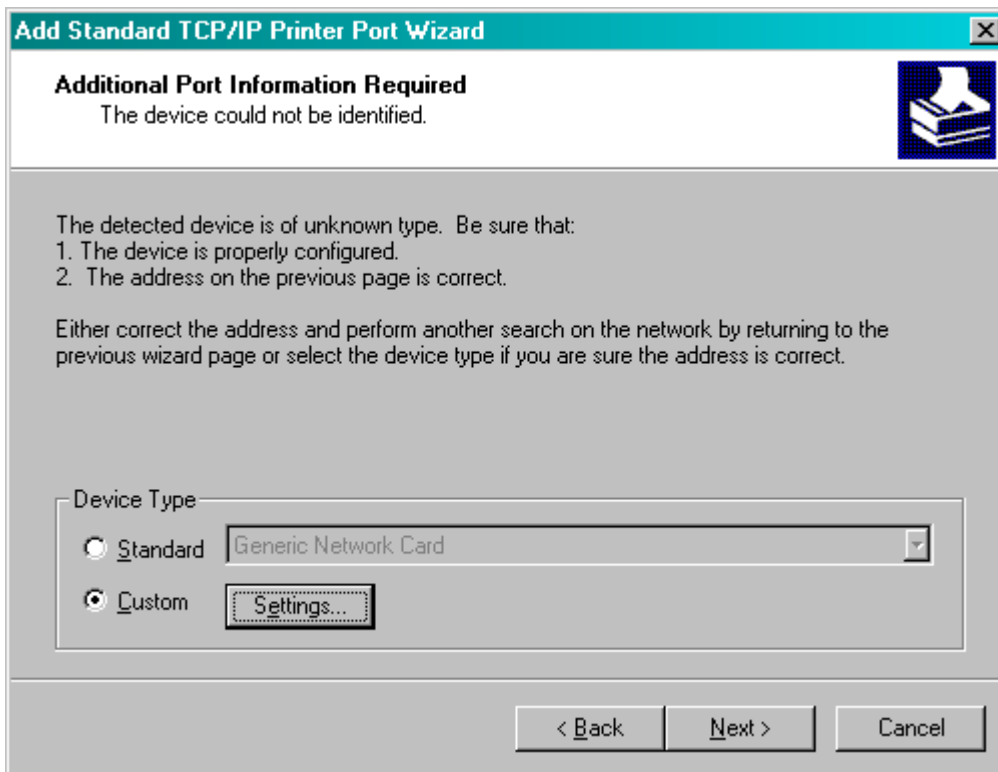
Create a new type, Click on Next.



Click on Next.



Input the PDA IP Address or the PDA network Name



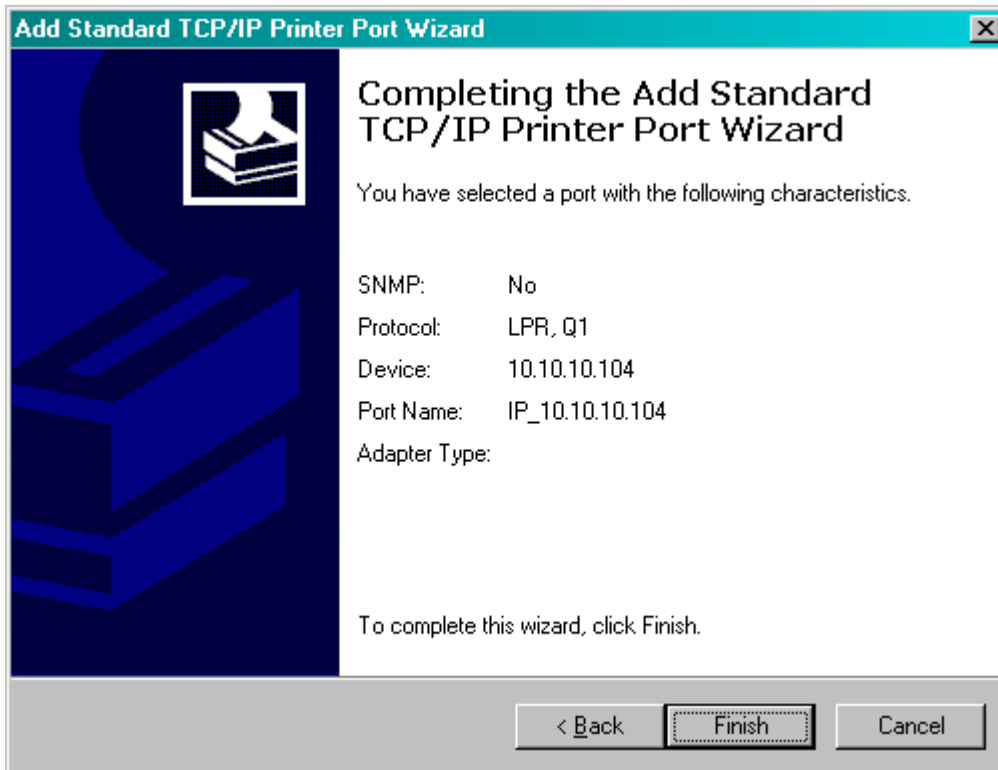
Add a custom model. Click on Settings.

The screenshot shows a dialog box titled "Configure Standard TCP/IP Port Monitor". It has a "Port Settings" tab. The "Port Name" field contains "IP_10.10.10.104" and the "Printer Name or IP Address" field contains "10.10.10.104". Under "Protocol", the "LPR" radio button is selected. The "Raw Settings" section has a "Port Number" field with "9100". The "LPR Settings" section has a "Queue Name" field with "Q1", a checked "LPR Byte Counting Enabled" checkbox, and an unchecked "SNMP Status Enabled" checkbox. Below this, the "Community Name" field contains "public" and the "SNMP Device Index" field contains "1". At the bottom are "OK" and "Cancel" buttons.

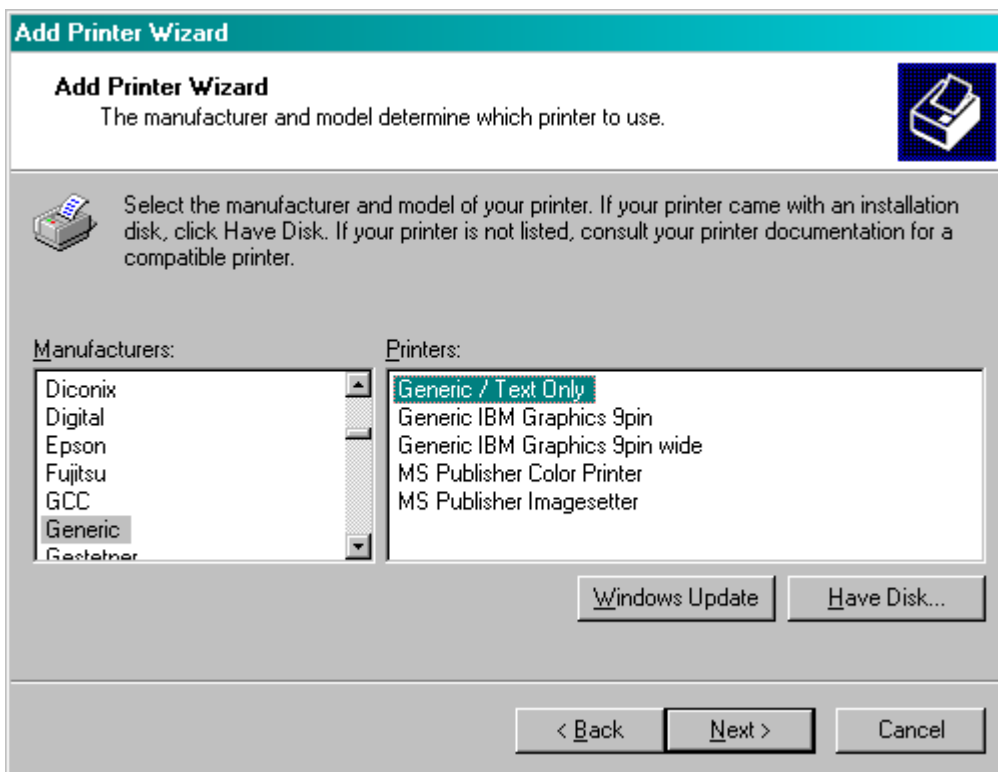
Input the IP address and the port name (automatically filled by wizard) [OK]

The screenshot shows a dialog box titled "Add Standard TCP/IP Printer Port Wizard". It has a sub-header "Additional Port Information Required" with a printer icon and the text "The device could not be identified." Below this, it says "The detected device is of unknown type. Be sure that:" followed by a list: "1. The device is properly configured." and "2. The address on the previous page is correct." It then says "Either correct the address and perform another search on the network by returning to the previous wizard page or select the device type if you are sure the address is correct." Under "Device Type", the "Standard" radio button is selected and the dropdown menu shows "Generic Network Card". The "Custom" radio button is also selected, and a "Settings..." button is visible next to it. At the bottom are "< Back", "Next >", and "Cancel" buttons.

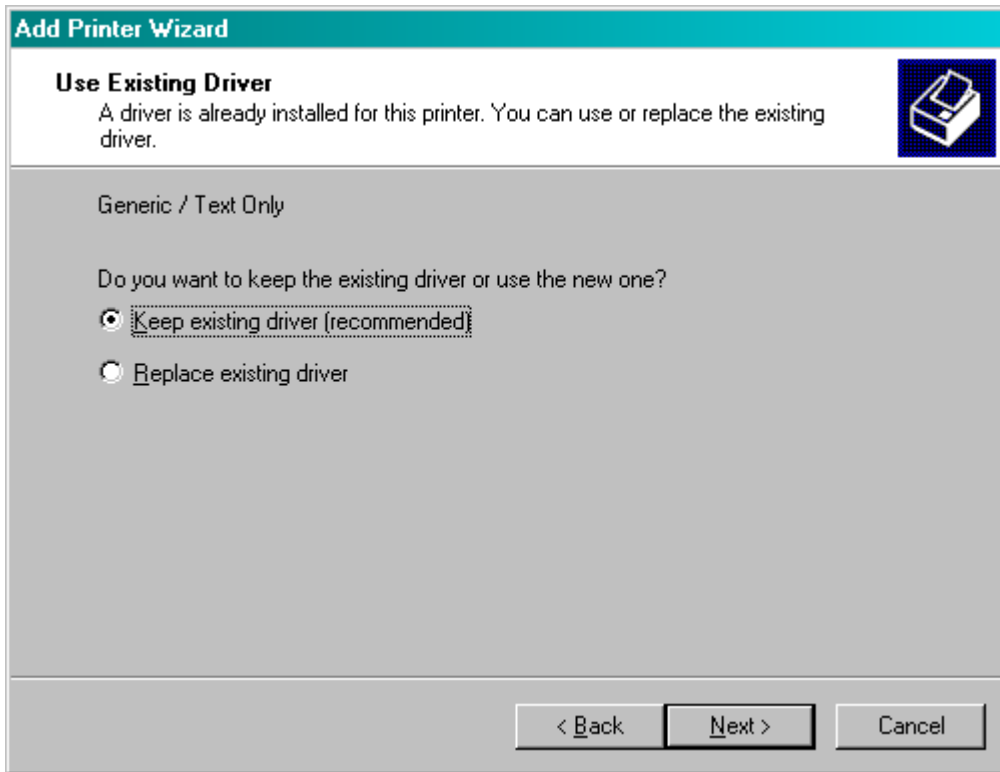
Click on Next



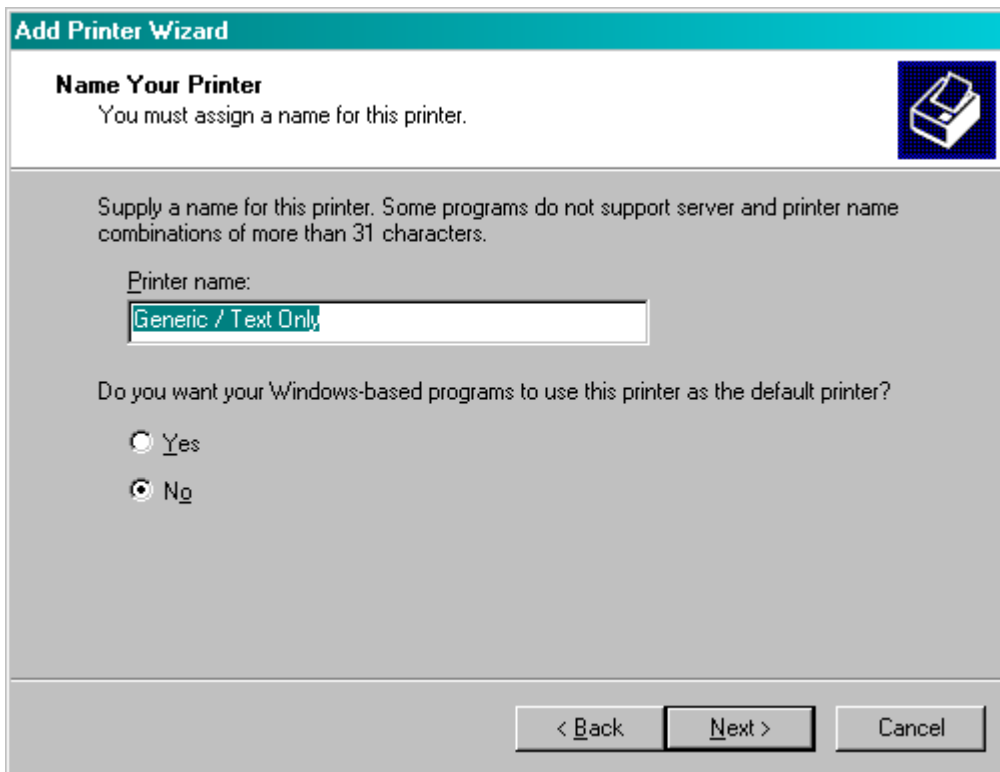
Click on [Finish]



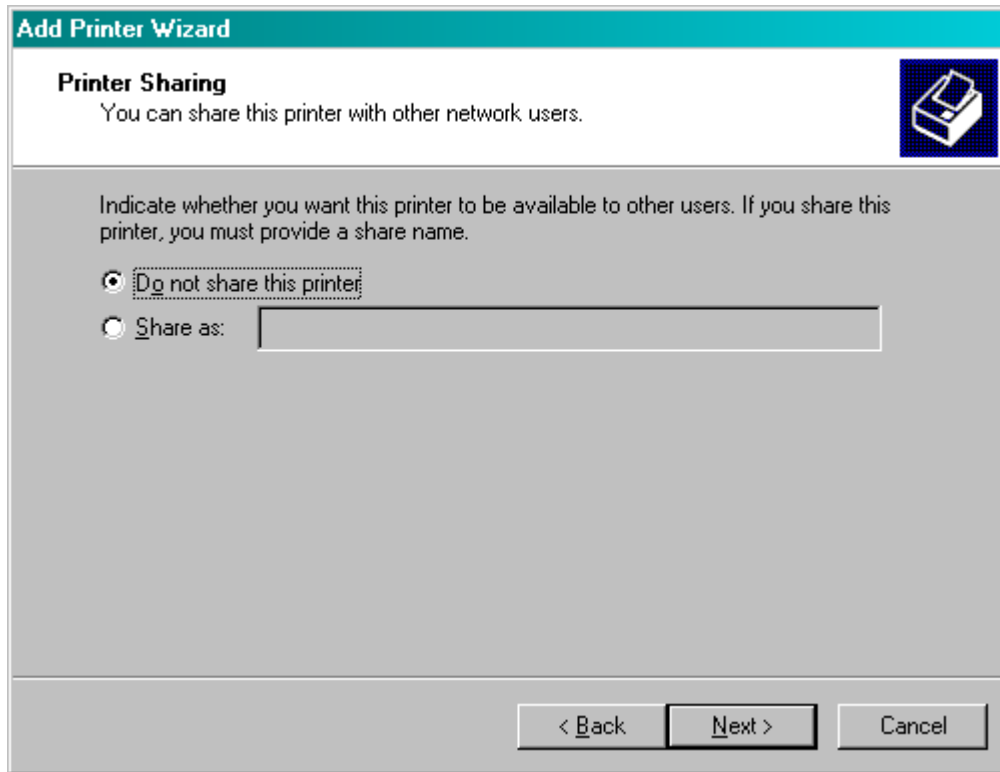
Configure a system Generic text printer on Windows [Next]



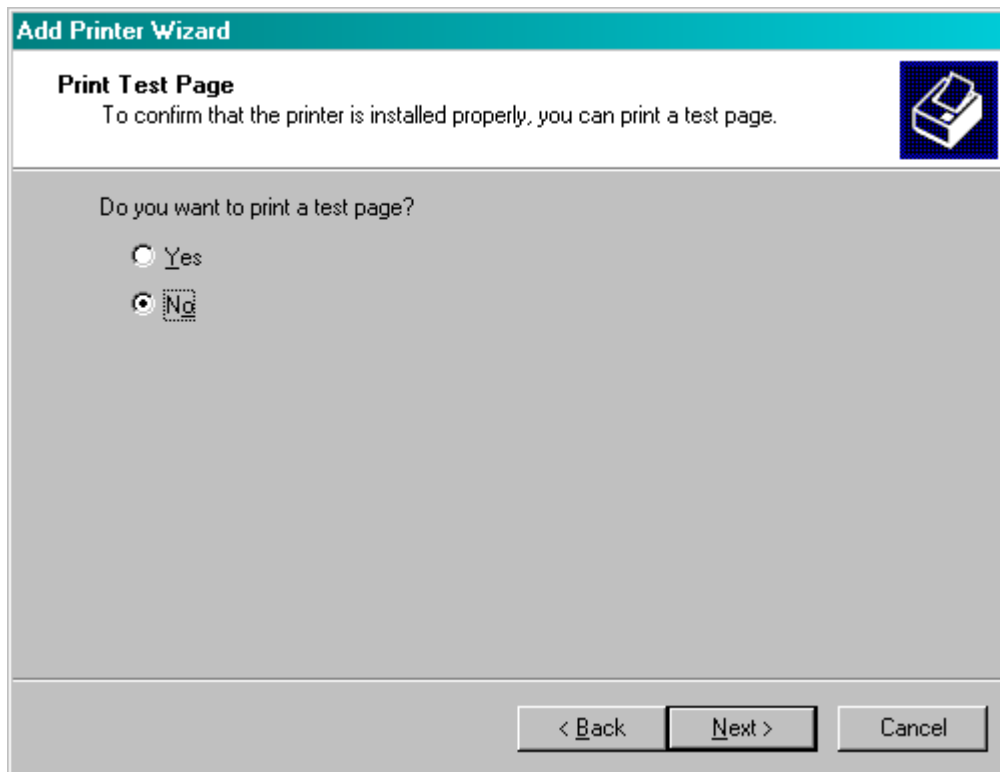
Do not update drivers... [Next]



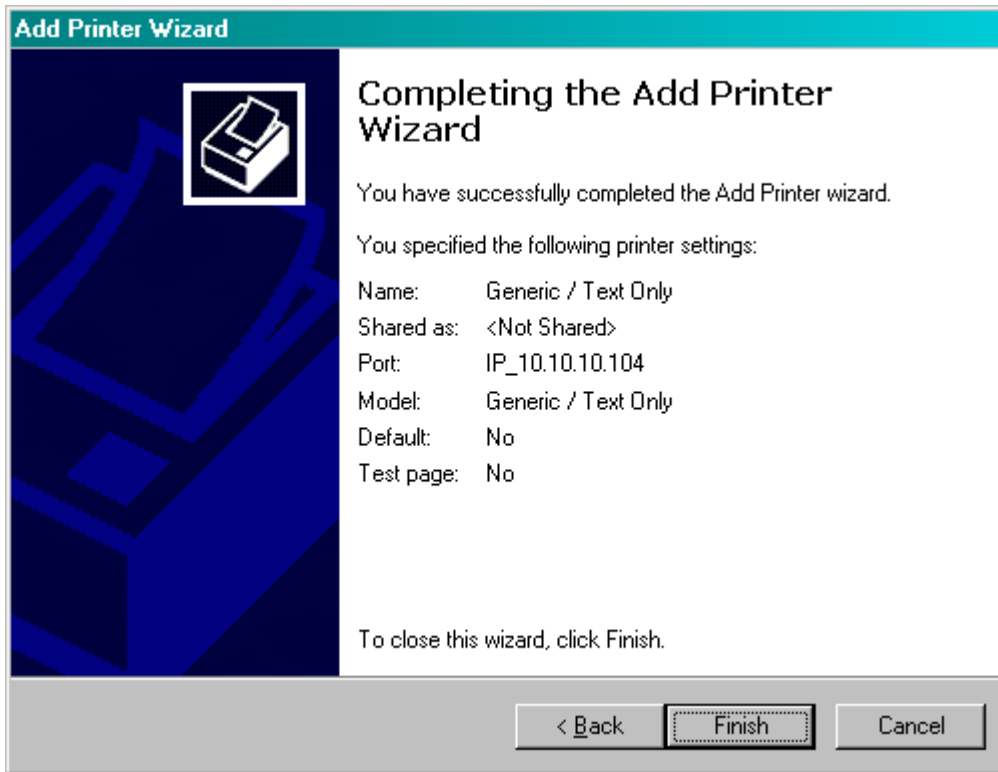
Give a name or let the standard generic name [Next]



Select the sharing mode...



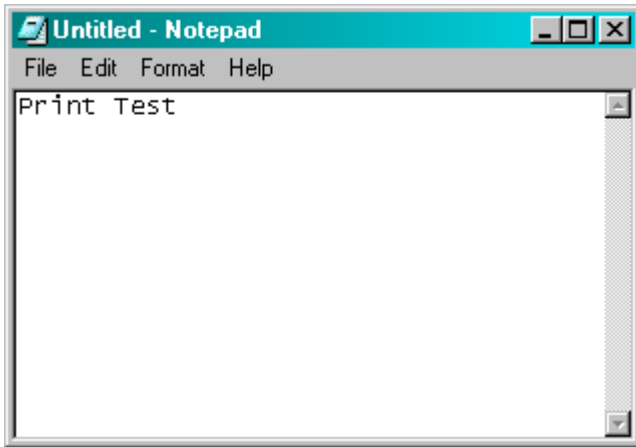
Do not test..



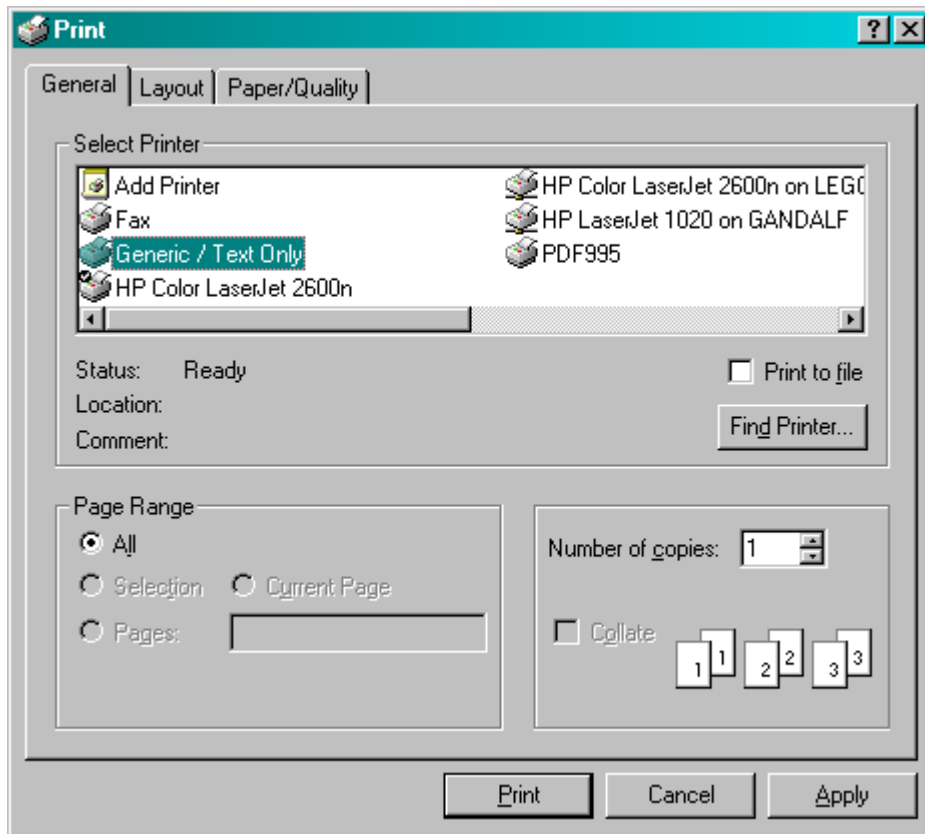
It's over!!

Testing WLpd Printer

Connect a printer to the configured serial port of the PDA.



Make a text file, and edit it by Notepad, click on File / Print.



Select the new printer...